

BP 2610 - CONY

PLEASE KEEP INSTRUCTIONS FOR FUTURE REFERENCE

! WARNING !

Safety guidelines and instructions must always be followed before making use of this product, please retain these instructions for future reference.

This product complies with product standard **AS/NZS 2088:2000**

WARNING: TO AVOID INJURY OR DEATH:

PUT ON ALL THE BRAKES WHENEVER YOU PARK THE STROLLER.

ALWAYS APPLY THE BRAKES WHENEVER THE STROLLER IS STATIONARY.

DO NOT LEAVE CHILDREN UNATTENDED.

SECURE THE CHILD IN THE HARNESS AT ALL TIMES.

DO NOT CARRY EXTRA CHILDREN OR BAGS ON THIS STROLLER.

MAKE SURE CHILDREN ARE CLEAR OF ANY MOVING PARTS IF YOU ADJUST THE STROLLER, OTHERWISE THEY MAY BE INJURED.

USE THE HARNESS AT ALL TIMES.

WHEN NOT IN USE DISCONNECT SHOULDER STRAPS FROM THE WAIST STRAP AND/OR BUCKLE.

The harness can form loops which may be a strangulation hazard. Never leave a harness connected when not fitted to a child in the stroller

Care should be taken if the stroller is to be used on stairs or escalators.

FOLLOW THE MANUFACTURER'S INSTRUCTIONS.

To avoid serious injury always use the harness provided to secure the child.

(Adjust the straps to suit the body size of your child)

Care should be taken whilst folding and unfolding stroller to prevent fingers being trapped. Ensure your child's fingers, hands and all other body parts are clear from any moving

part when adjusting the seat or handle on your stroller.

This stroller should not be used near an open fire or an exposed flame.

It is unsafe to use accessories other than those supplied or approved by Capella.

THE MAXIMUM WEIGHT FOR THE SEAT UNIT IS 18KG

THE MAXIMUM WEIGHT FOR THE BASKET IS 5KG OR 1KG IN SIDE POCKET.

THE MAXIMUM TOTAL WEIGHT FOR THE STROLLER IS 24KG

This stroller is suitable for newborn until 2 years old.

Do not run or jog with this stroller



DO NOT ATTEMPT TO LIFT THE STROLLER BY THE BUMPER BAR OR TRAY.



DO NOT ALLOW MORE THAN 1 INFANTS IN THE STROLLER.



DO NOT PUT ANYTHING ON THE CANOPY OR HANG ON THE HANDLE.



DO NOT ALLOW CHILDREN TO STAND ON THE SEAT OR FOOTREST.



DO NOT USE THIS STROLLER ON STAIRS OR ESCALATORS.

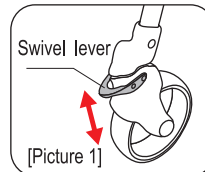


PLEASE ENSURE THAT THE SAFETY HARNESS IS ADJUSTED AND USED PROPER WAY AT ALL TIMES.



MIND THAT YOUR FINGERS ARE SAFE WHEN YOU OPEN AND FOLD THE STROLLER.

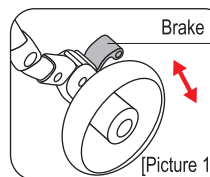
TO USE SWIVEL LOCK



Swivel lever
[Picture 1]

1. To release a swivel lock
 - Pull up a swivel lever as illustrated in picture above.
2. To fix a swivel lock
 - Push down a swivel lever as illustrated in picture above.

TO USE BRAKE



Brake
[Picture 1]

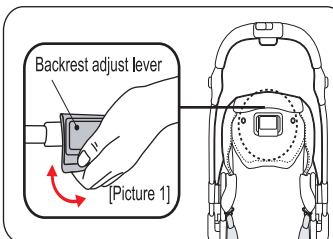
1. To use brake
 - Push brake lever down as illustrated in picture 1.
2. To release brake
 - Lift up brake lever.



WARNING

- Always set brake when stroller is not used to avoid an accidental rolling.
- Do not leave a stroller in an inclined road too long time with brake on.
- Make sure that brake is set properly.
- Set a wheels direction properly to avoid an accident and for smooth strolling.

TO ADJUST A BACKREST



Backrest adjust lever
[Picture 1]

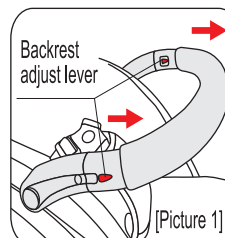
- Please pull up the lever to recline the backrest as Picture 1.
- Please push the backrest up until you hear sound "Click" to stand the backrest.



WARNING

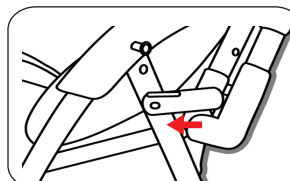
- Please be careful of baby's body not to be caught in the stroller body.
- Only one baby is available to seat in the stroller with any backrest position.
- Do not adjust the backrest while your baby seat in the stroller.

TO USE A FRONT BUMPER BAR



Backrest adjust lever
[Picture 1]

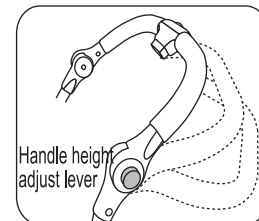
- In order to detach a bumper bar, please push a release button on both sides then pull it out as picture 1.
- When you attach a bumper bar, please insert it until you hear sound "click".



SAFETY LEVER

Safety Lever is placed in red (You cannot open/fold the stroller)
Place safety lever "LOCK" while you are in drive.

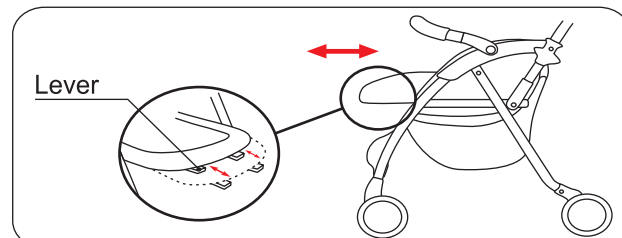
TO ADJUST A HANDLE HEIGHT



Handle height adjust lever

- Press buttons on both sides and adjust the handle height in a desired position as illustrated in the picture.

Extension seat



- Please pull the lever under the seat as pic1.
- Please put the extension seat in when you don't use.



WARNING

- Please do not have your baby step up extension seat.
- Please do not seat on the extension seat. It may cause an accident.

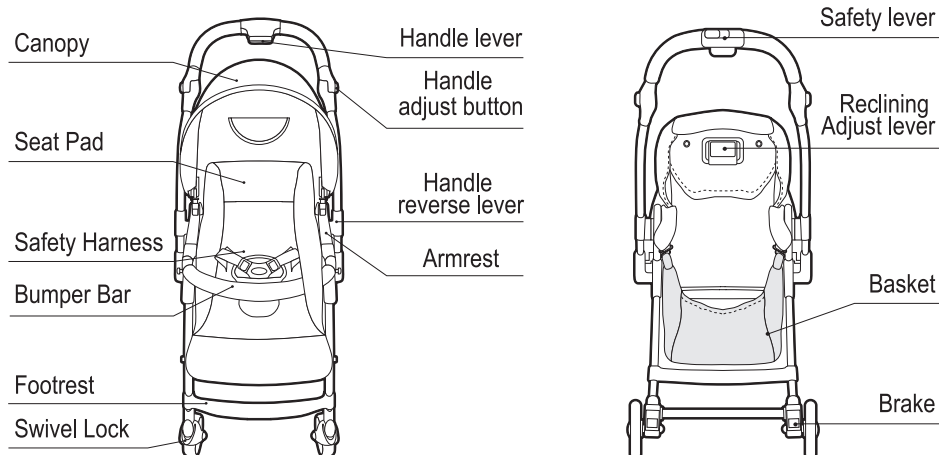
Attaching the Footcover.

- attach the two snap buttons on each side of the covers of the stroller. Cover the seat with the material and roll the top of the cover slightly on the bumper.

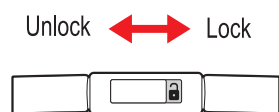
Detaching the Footcover.

- reverse the attachment procedure.

Parts



Open and Fold the stroller

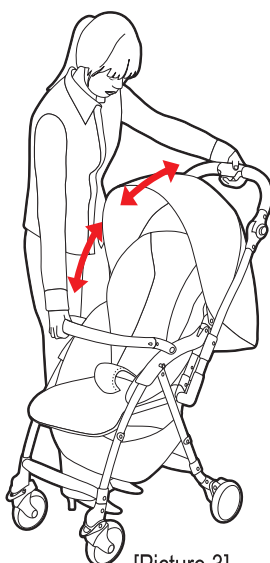


Unlock Lock

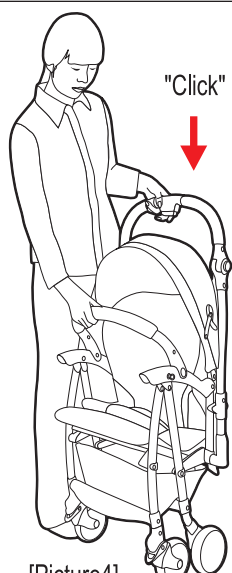
[Picture 1]



[Picture 2]



[Picture 3]



[Picture4]

1.To Open Stroller

- Position safety lever on "unlock" (🔓)
- Grab the handle and pull up as shown in [picture 2] Then, Open the stroller using your both hands as shown in [Picture 3].

2.To Fold Stroller

- Fold the canopy before you fold stroller.
- Grab the handle and pull up the handle lever as shown in [picture 2]. Then, fold the stroller using your both hands as shown in [picture 4].
- Please push the handle down and hear "Click" sound to lock the stroller after fold stroller.



WARNING

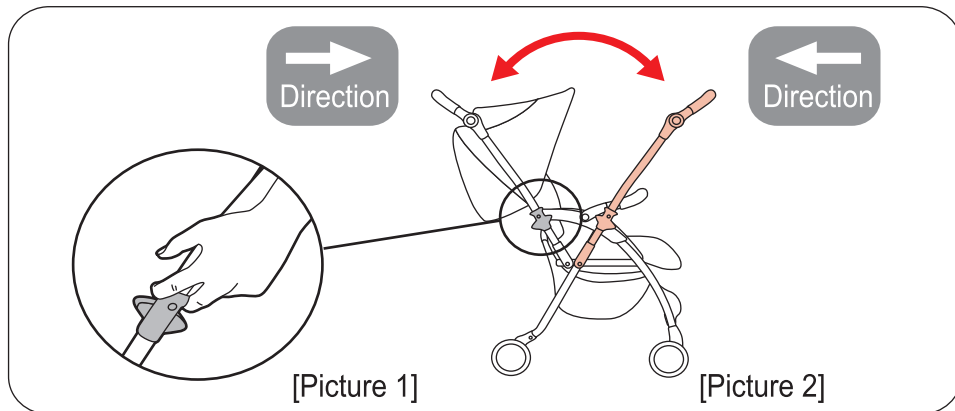
- Position safety lever on 'Lock' (🔒) while in use. Place this lever to 'Release' (🔓) position only when you open and fold. It may cause an accident if the lock is released when you use the stroller.
- Keep the proper usage in mind because functions of both levers are different.

TO USE SAFETY LEVER

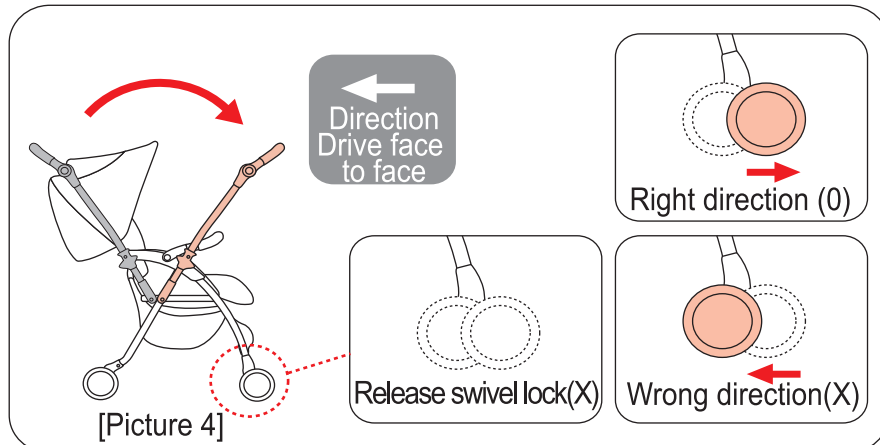
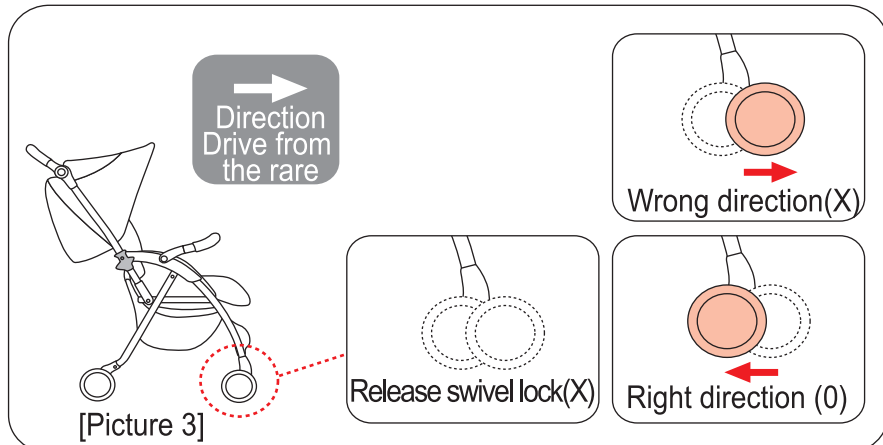
- Safety Lever is placed with blue sticker. (You cannot open/fold the stroller)
- Place safety lever "LOCK" while you are in drive.
- Safety Lever is placed with red sticker. (To Open/ To Fold the stroller).
- Do not put safety lever "UNLOCK" while you are in drive.

BP 2610 - CONY

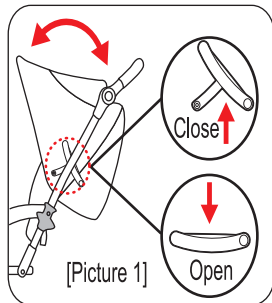
TO REVERSE A HANDLE (When you want to stroll looking at your baby, you can reverse a handle.)



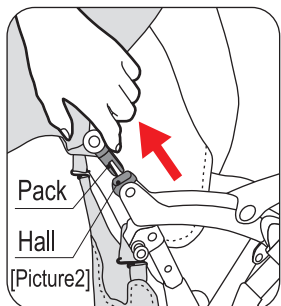
- Please release safety lock in a handle part.
- Please pull up both handle levers as Picture 1.
- After pull up handle lever, please reverse a handle to the direction as Picture 2 until you hear sound "Click".
- When you finish to reverse a handle, please lockup the safety lock.
- When you stroll behind your baby, please release swivel lock of front wheel or fix it in right direction as Picture 3.
- When you stroll facing to your baby, please release swivel lock of front wheel or fix it in right direction as Picture 4.



Canopy



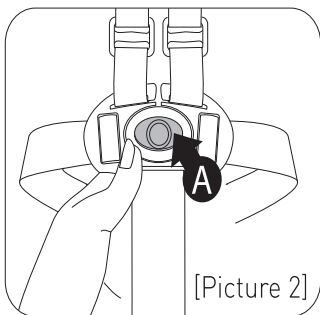
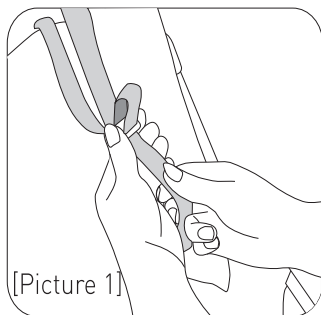
1. To use a canopy
When you fold or open canopy, push up or down canopy lever as illustrated in the picture above.



2. To detach and attach canopy
When you want to detach a canopy, please pull a pack out as Picture 2.
When you attach it, please put a pack in the hall as Picture 2.

- WARNING**
- Please carefully open and fold when you use canopy lever.
 - Do not keep a stroller long time in a hot place like a trunk(Car) in summer.
 - Please detach Canopy then keep it in a shade when you do not use.
 - Please fold a canopy before you fold a stroller.

5-point harness



CAREFULLY PLACE YOUR CHILD INTO THE SEAT AND BRING THE SAFETY HARNESS AROUND THE CHILDS WAIST AND OVER THE CHILDS SHOULDERS.PLACE THE CROTCH STRAP BETWEEN YOUR CHILDS LEGS. TIGHTEN THE HARNESS TO BE SNUG AROUND THE CHILDS WAIST AND OVER ITS SHOULDERS. (Picture 1)
ATTACH EACH OF THE SHOULDER STRAPS TO THE CROTCH STRAP BUCKLE WITH EACH END.REPEAT THIS FOR BOTH SHOULDER STRAPS.ONCE EACH SHOULDER STRAP IS ATTACHED ON THE WAIST BUCKLE INSERT THE WAIST STRAP END TO THE BUCKLE. REPEAT FOR BOTH SIDES.THEY SHOULD SNAP IN. (PULL ON THEM TO TEST) TO RELEASE THE HARNESS SQUEEZE THE CENTRE OF THE BUCKLES FOR BOTH WAIST STRAP ENDS. (Button A in Picture 2)

WARNING

USE THIS HARNESS AT ALL TIMES

WARNING

WHEN NOT IN USE DISCONNECT SHOULDER STRAPS FROM THE WAIST STRAP AND/OR BUCKLE

Care and Maintenance

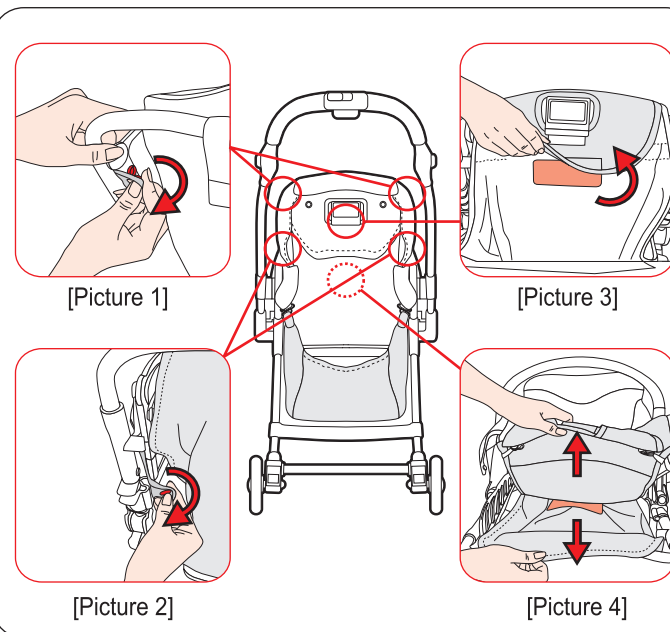
○ It is important to care a stroller normally. Especially if you do not care for movable spot of the wheel part, it is difficult to have suitable performance. For long and clear use, please care for the baby stroller as below:

1. How to care for the wheels

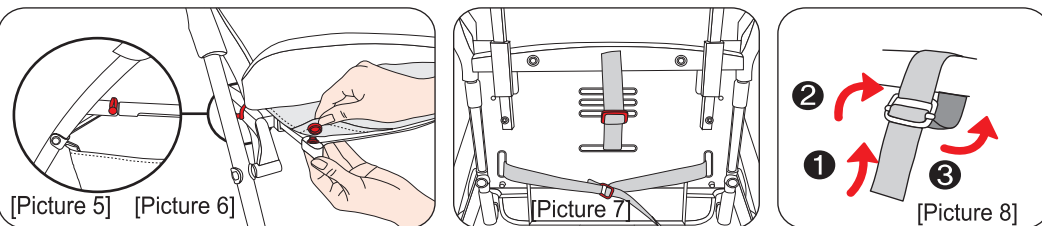
- ① When it get dirty
 - Please wash out dirt on wheels by clean fabric.
 - For serious dirt, please wash out with water and quickly wipe out with clean fabric.
 - After you wipe out, please put some oil between wheel and shaft.
- ② When wheels do not work properly
 - Please check wheel parts if there are something to disturb for wheel rotation.
 - If there's nothing to disturb for wheel rotation, please put some sewing machine oil.
- ③ When you feed oil in wheels
 - Please use lubricating oil or sewing machine oil
 - Please drop some oil and do not put too much oil.
 - After you drop some oil, please rotate a wheel to spread oil.

2. How to detach a seat.

- If you would like to detach a seat, please follow as below.

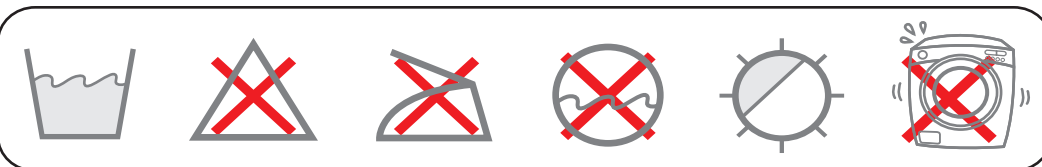


1. After detach a canopy, please take snap button off on the rare wing as Picture 1.
2. Please take snap buttons off on a backrest pipe as Picture 2.
3. Please detach velcro tape as Picture 3.
4. As the top view Picture 4, please take velcro tape off between main seat and backrest.



5. Please take elastic cords beside of extension seat as Picture 5.
6. Please detach snap buttons beside of extension seat as Picture 6.
7. Please take off seat fixing belts under the main seat from the stroller body.
8. Please reverse above steps when you attach seat to stroller body.

HOW TO WASH A SEAT PAD



- Do not use a washing machine and detergent.
- Please wash seat pad by hands and dry it in the shade where wind is blowing.