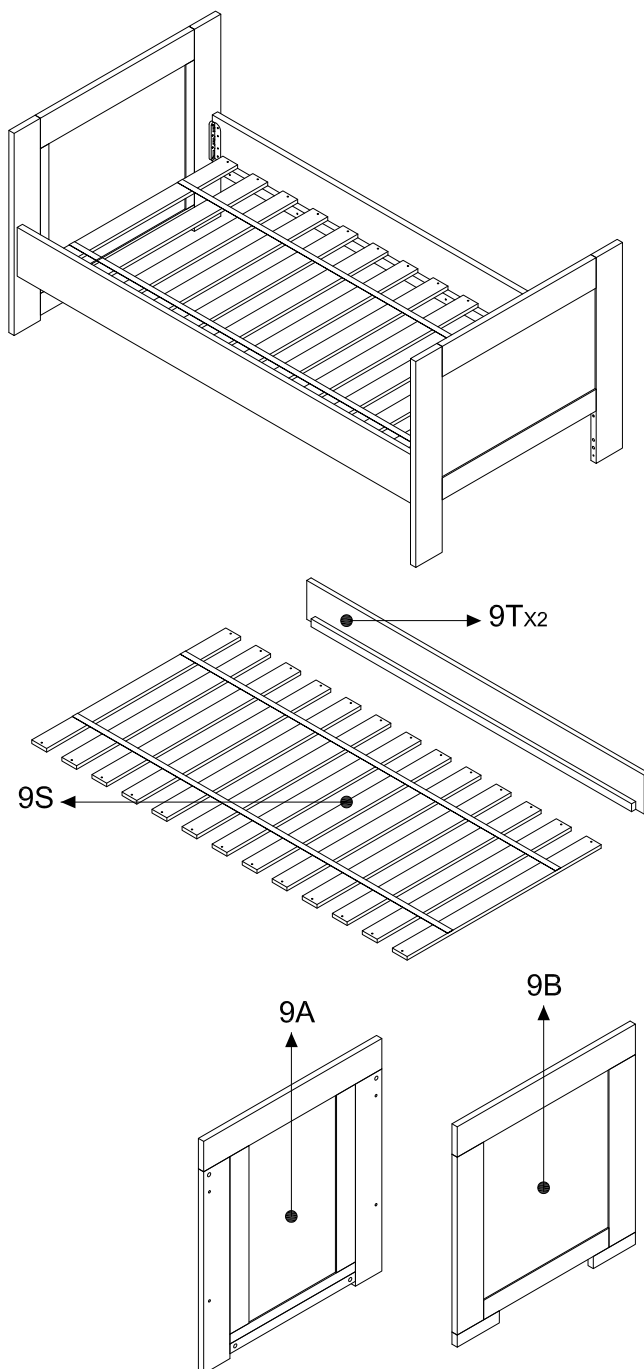


# AU-LUCCA

## Cot Instructions

IMPORTANT. RETAIN FOR FUTURE REFERENCE.  
READ CAREFULLY

60 min. ▶ 



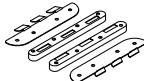
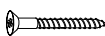
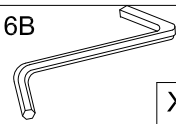
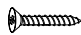







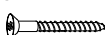
LUC9325: 9T,9H  
LUC9525: 9S

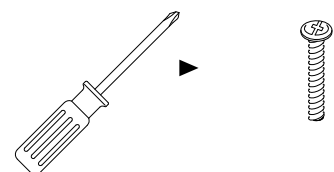
CH200: AUS

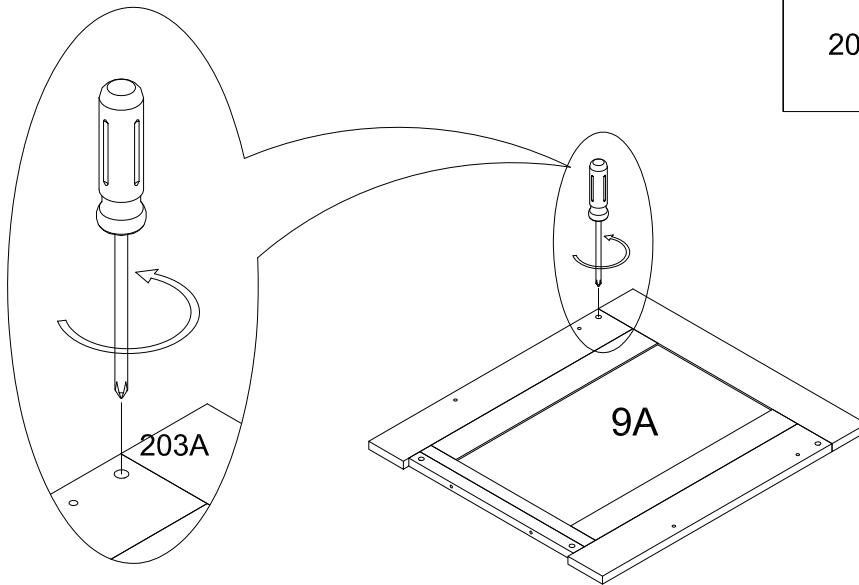
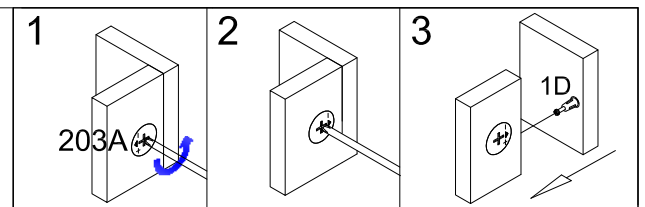
lovenhcare

www.lovenhcare.com.au

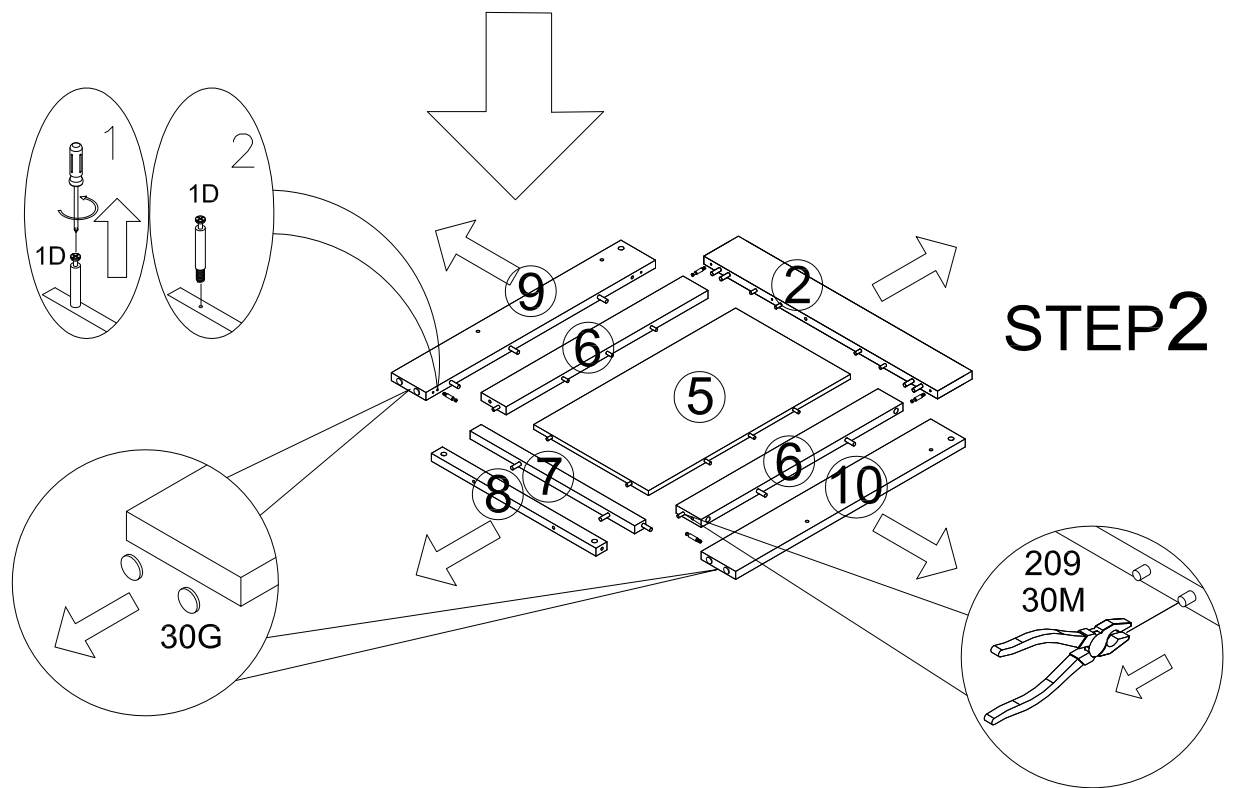
9H

48A  X2	11A  4*30 X16
6B  X1	34A  4*20 X16
209  Ø8*40 X24	30L  X1
 Ø20mm X8	30F 10#  Ø20mm X16
30M  Ø10*60 X9	30B  Ø6mm X8
30H  500*120 X1	11A  4*30 X26

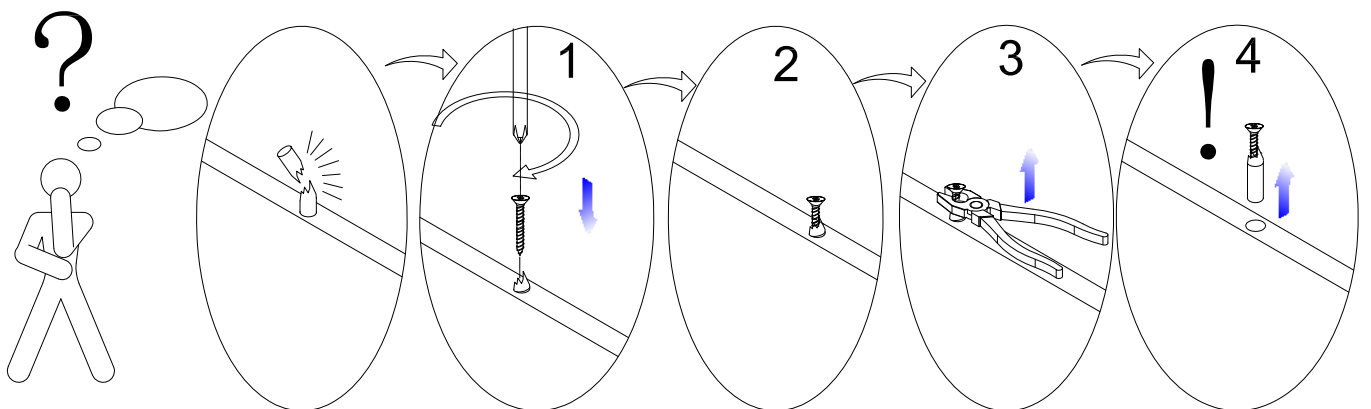


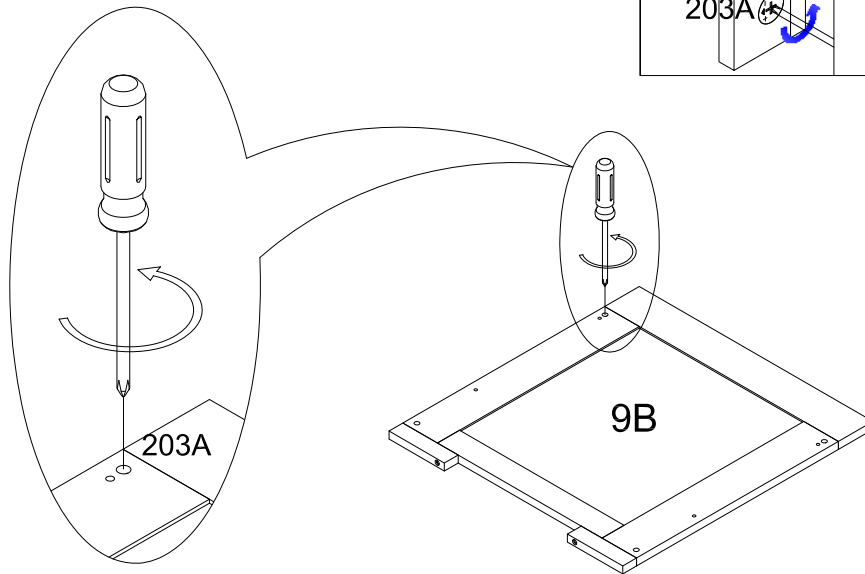
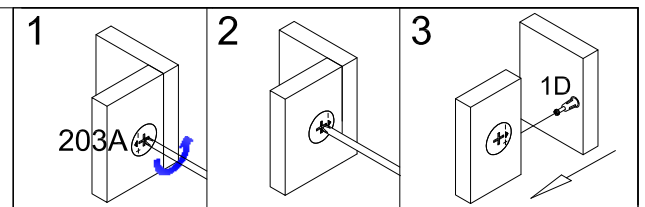


STEP1

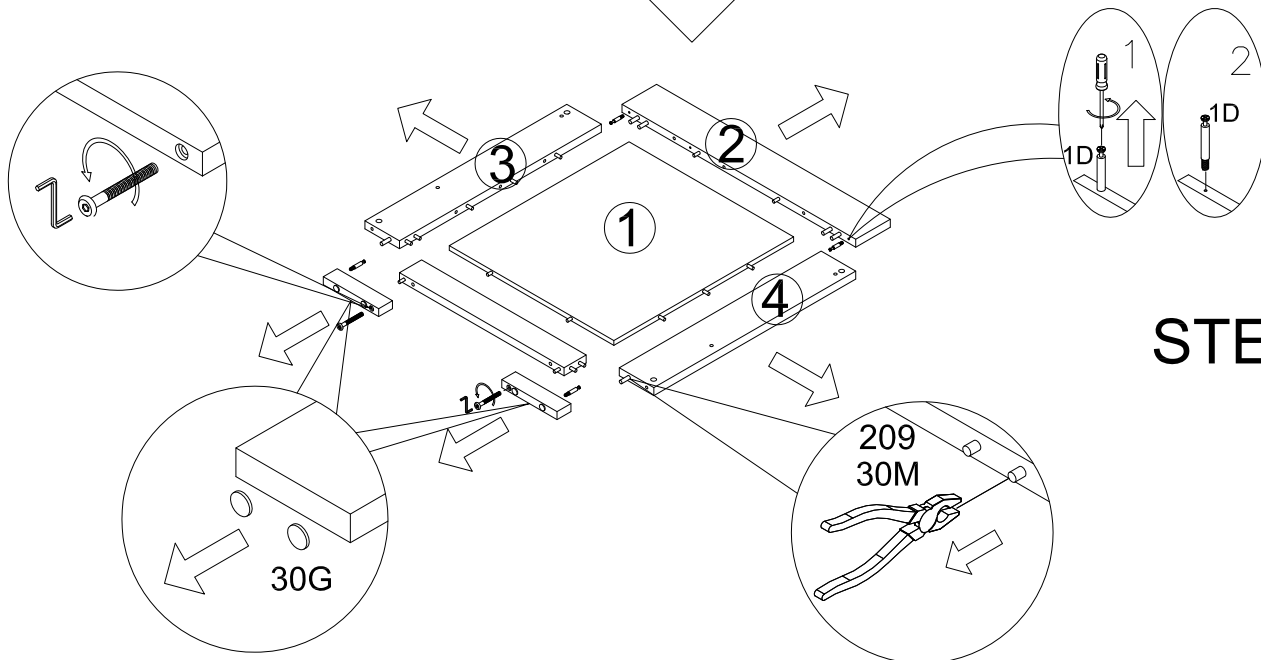
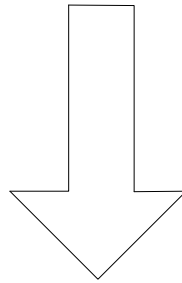


STEP2

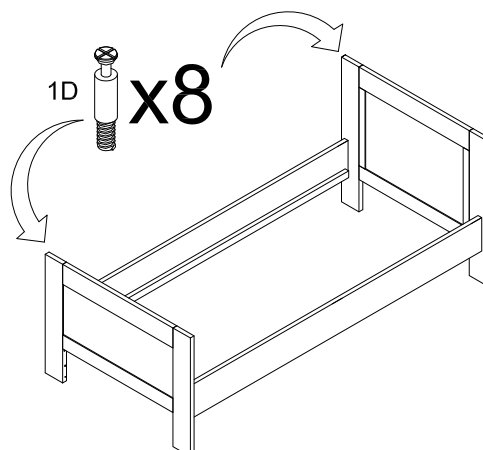


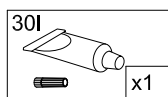
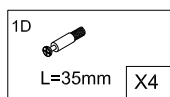
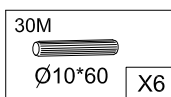
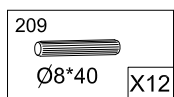
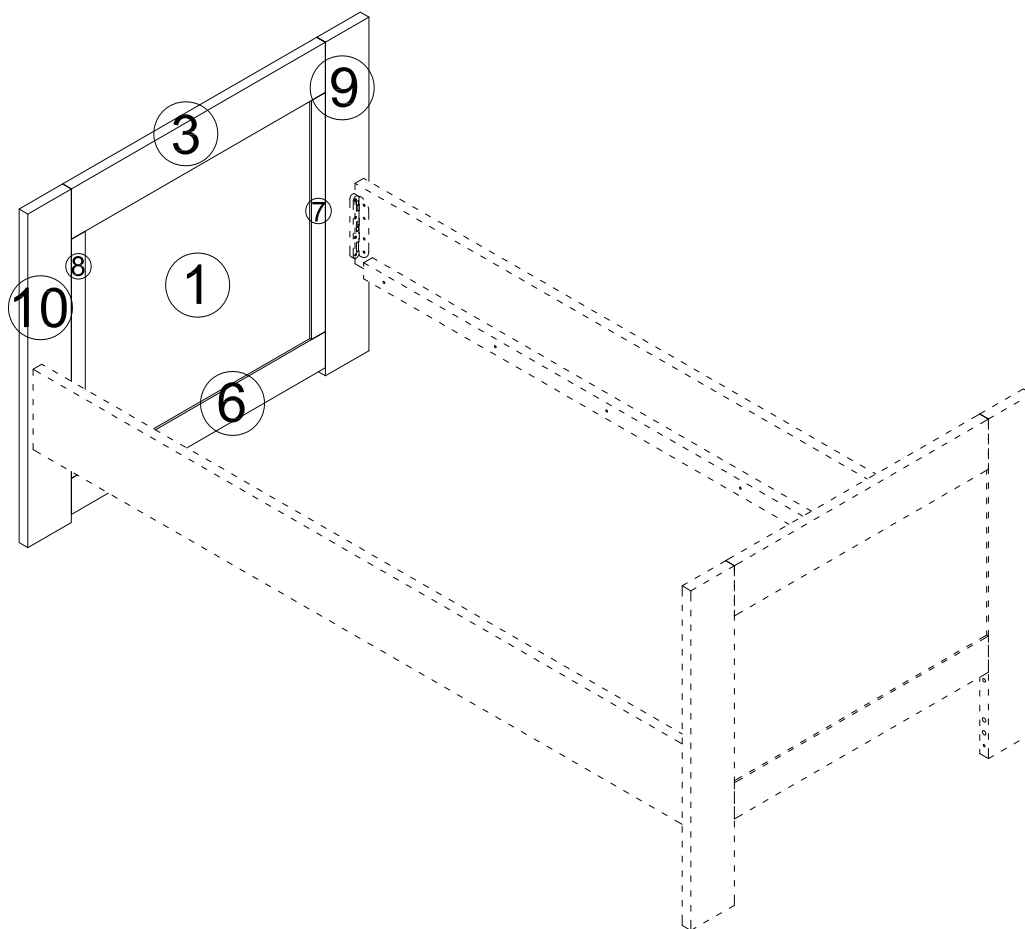


**STEP3**



**STEP4**

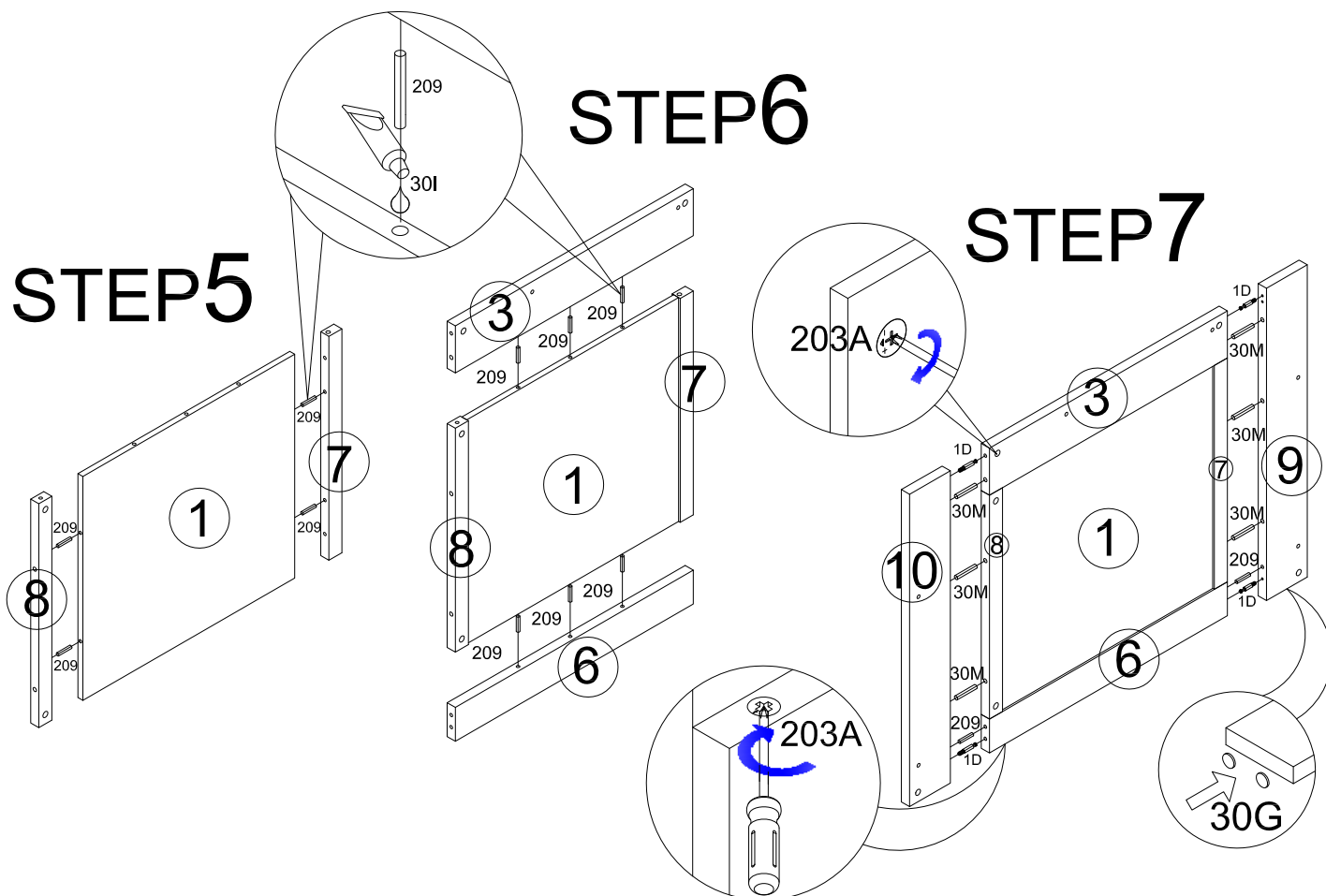




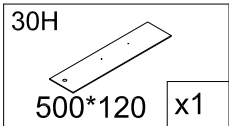
## STEP5

## STEP6

## STEP7

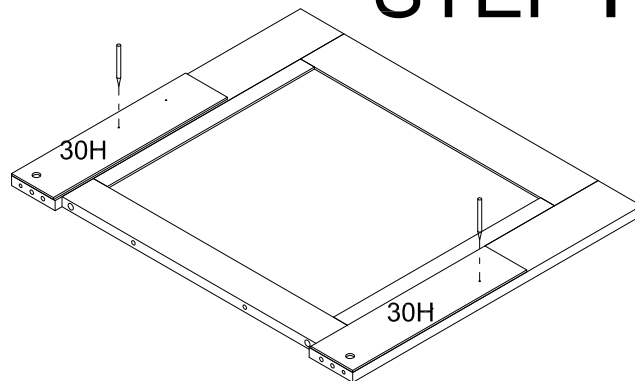
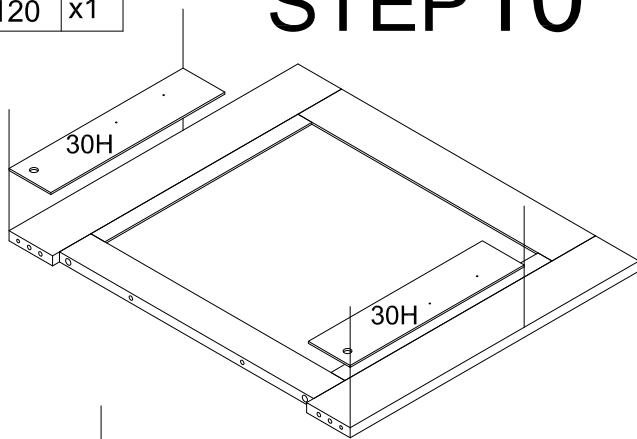






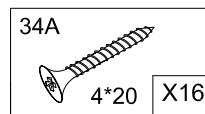
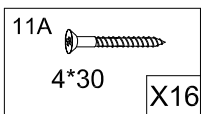
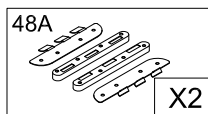
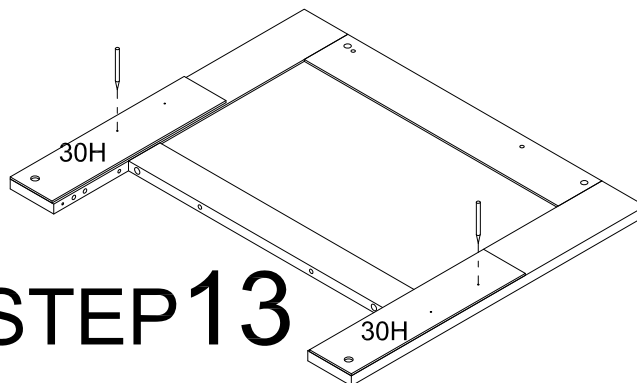
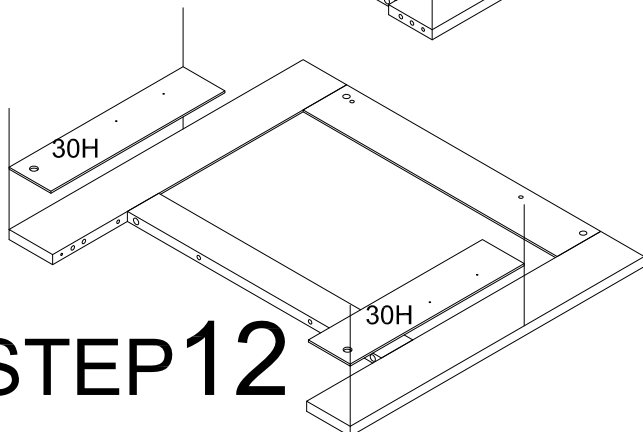
## STEP10

## STEP11

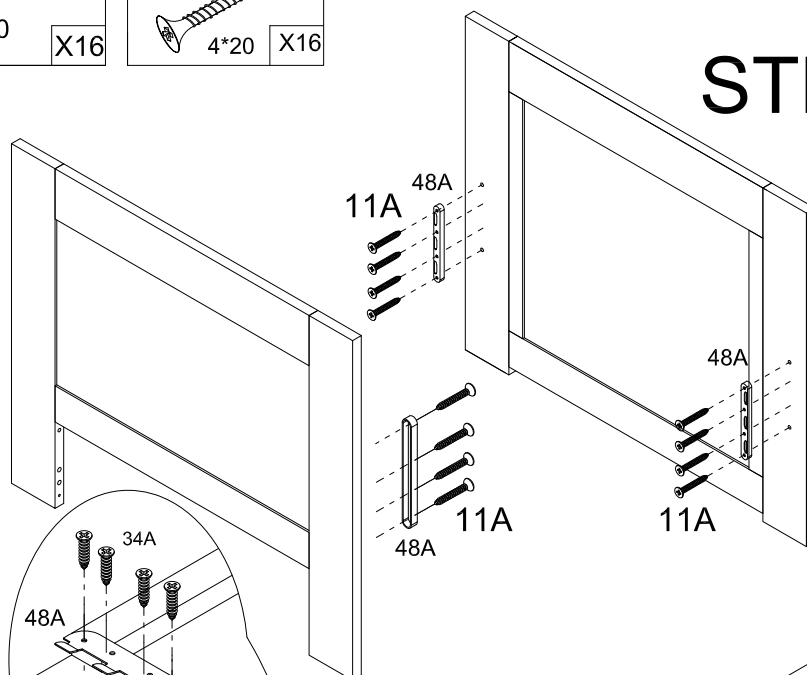


## STEP12

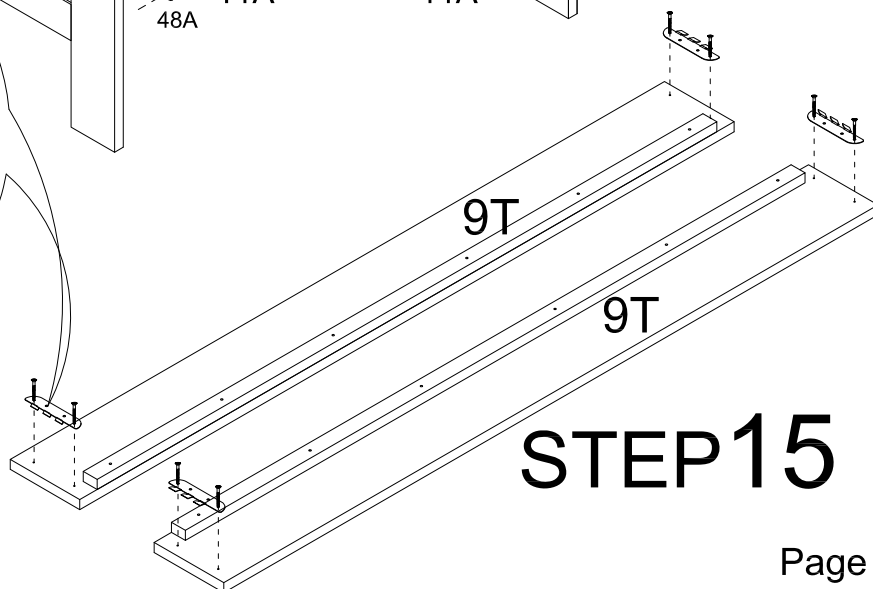
## STEP13

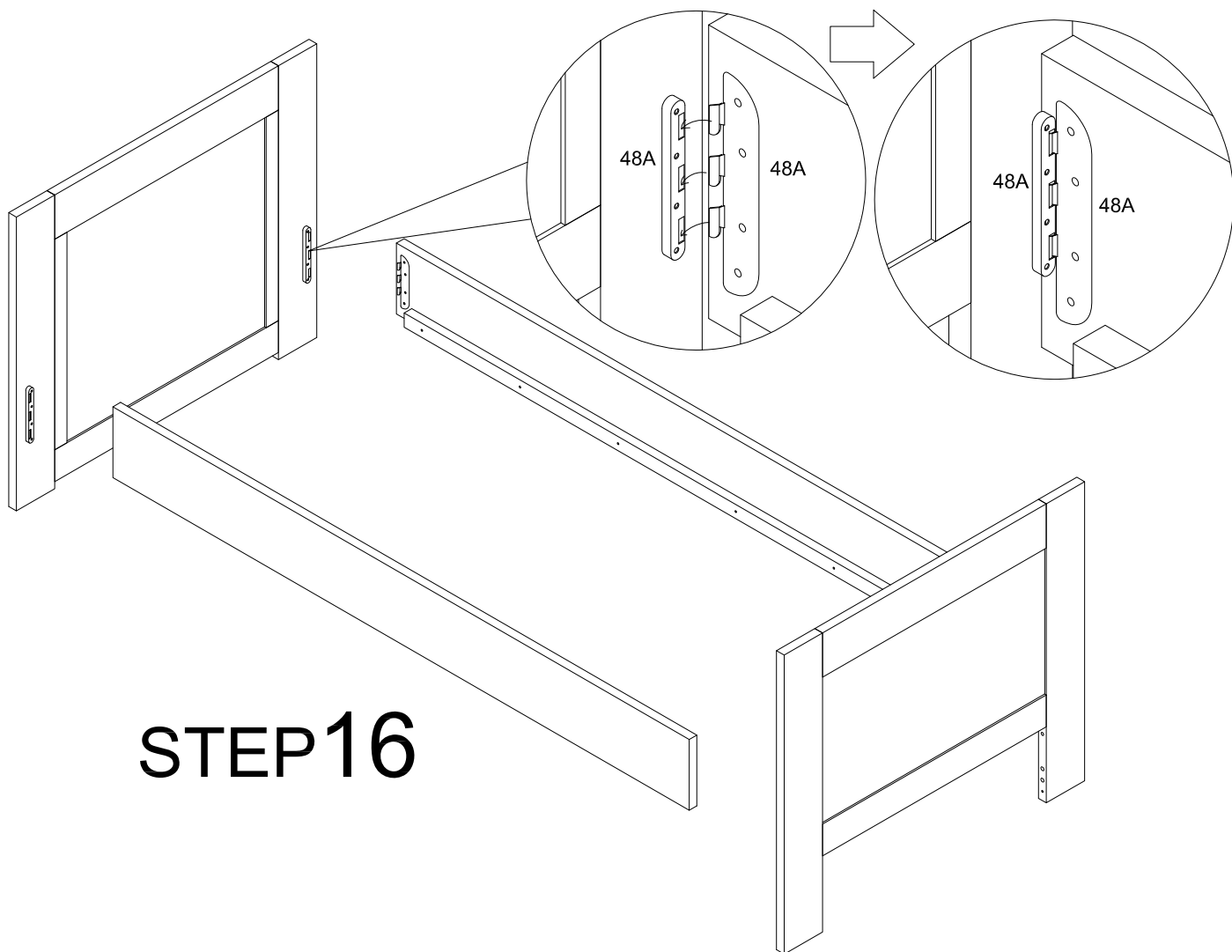


## STEP14

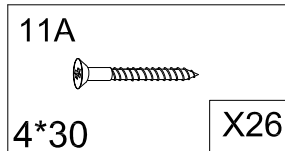


## STEP15

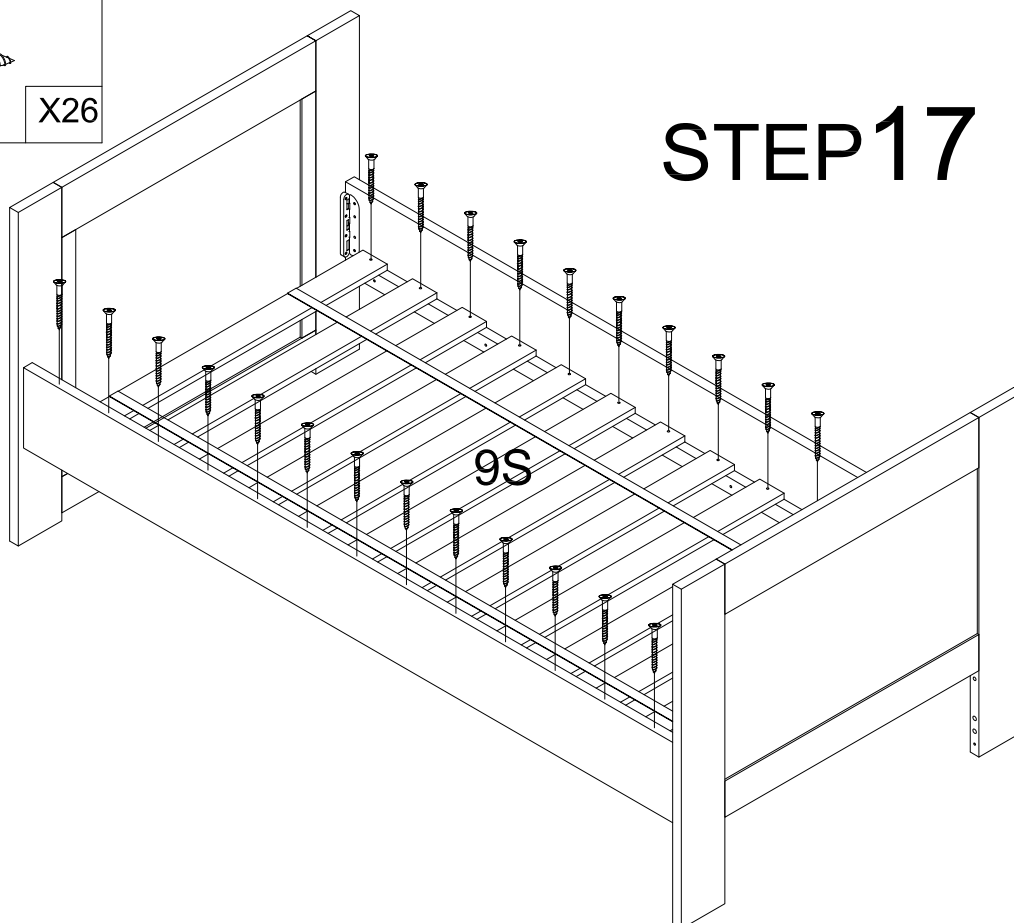


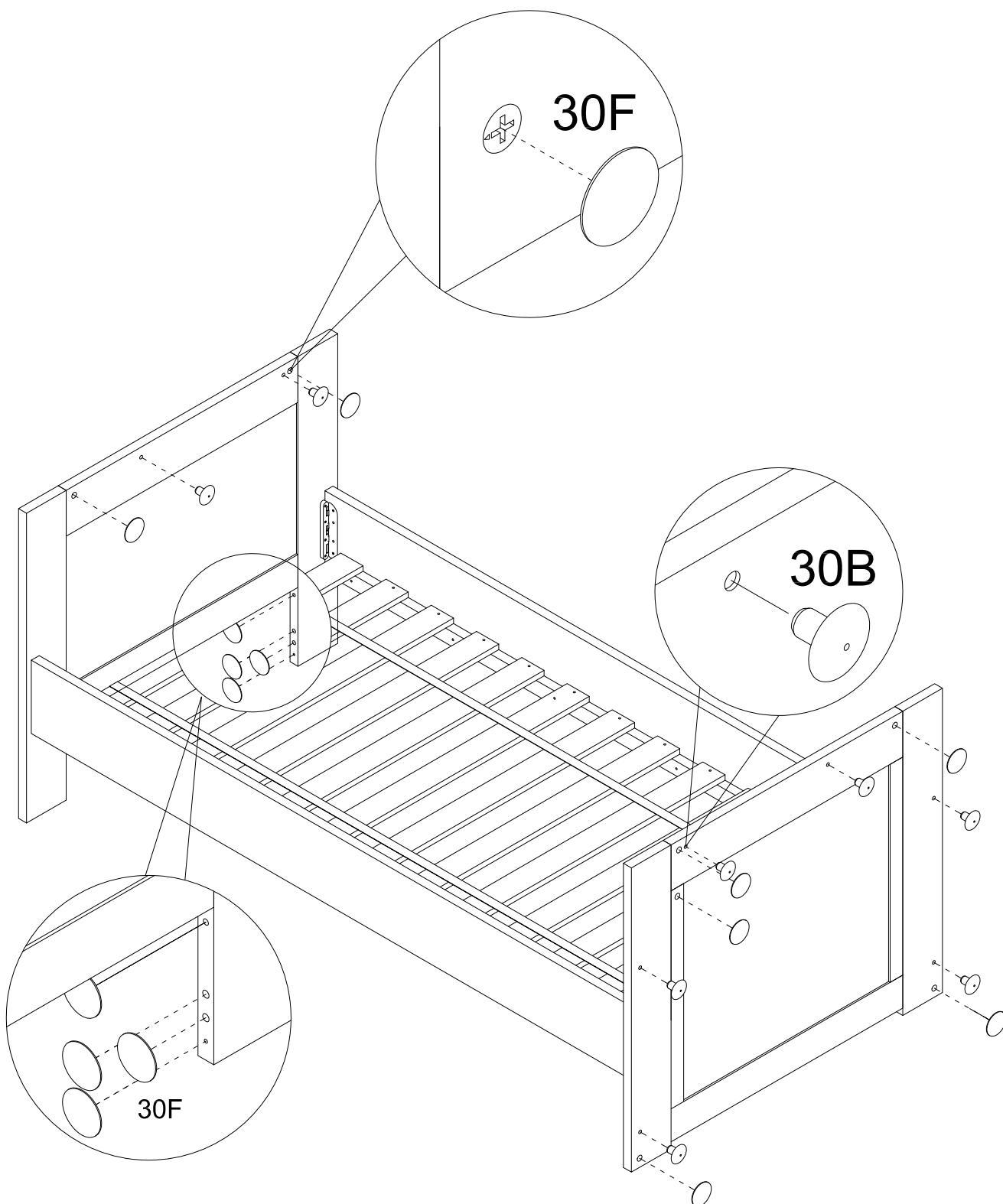
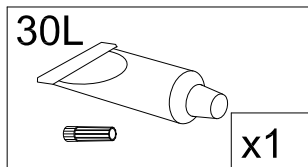
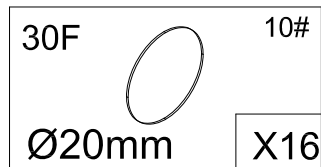
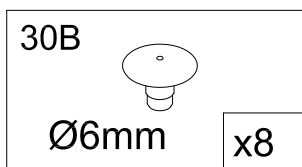


**STEP16**



**STEP17**





# STEP18



# **LOVE N CARE WARRANTY AGAINST DEFECTS**

All Love N Care products are guaranteed for twelve months from the date of purchase. Our goods come with guarantees that cannot be excluded under the Australian Consumer Law. You are entitled to a replacement or refund for a major failure and for compensation for any other reasonably foreseeable loss or damage. you are also entitled to have the goods repaired or replaced if the goods fail to be of acceptable quality and the failure does not amount to a major failure. This covers against faults which develop through faulty materials and workmanship.

Misuse, accidental damages, normal wear and tear or neglect are not covered.

If a fault becomes apparent, please return the item to the store of purchase with your receipt.

You must inform the store what the defect is. We will then arrange for its repair or it will be assessed for replacement as expediently as possible. The benefits of this warranty are in addition to other right and remedies under the law in relation to the goods or services to which this warranty relates. If you are unable to return the item to the store of purchase, you can contact Love N Care on free call 1300 732 599.

Where you send the product directly to the manufacturer then you may be liable for the costs of transportation to and from Love N Care. Love N Care will meet the reasonable expenses incurred by a consumer in a making a warranty claim. You can claim expenses incurred in making a claim by contacting our customer service team on 1300 732 599 or by email at [info@lovencare.com.au](mailto:info@lovencare.com.au)

The logo for Love N Care features the words "love" and "care" in a lowercase, sans-serif font. The letter "n" is stylized, appearing as a large, bold, italicized letter that overlaps the "love" and "care" text. A small trademark symbol (TM) is located at the top right of the "care" text.

[www.lovencare.com.au](http://www.lovencare.com.au)