

vulu™



VULUBOO

Read all instructions BEFORE assembly and USE of product. KEEP INSTRUCTIONS FOR FUTURE USE.

www.lovencare.com.au

Congratulations

Congratulations on purchasing your new Vulu Booster seat.

In just a few steps you should be able to assemble this unique product and have it ready to meet your beautiful child :)



WARNINGS



WARNING:

TO PREVENT SERIOUS INJURY OR DEATH FROM SLIDING OUT, FALLS, OR TIPPING OVER:

- Never leave the child unattended.
 - Always use the restraint system and ensure it is correctly fitted.
 - Always check the security and the stability of the chair mounted seat on the adult chair before use.
 - Do not use this chair mounted seat on stools or benches.
 - Always use the chair attachment system and ensure it is correctly fitted before use.
 - Prevent serious injury or death. Do not use in a motor vehicle.
 - This product is intended for children able to sit up unaided and up to 3 years or a maximum weight of 15 kg (33lbs).
 - Position the adult chair with the chair mounted seat placed in a position where the child is not able to use its feet to push against the table or any other structure as this can cause the adult chair supporting the chair mounted seat to tip over.
 - Do not use the chair mounted seat if any part is broken, torn or missing.
 - Do not use any replacement parts or accessories other than those approved by or supplied by Love N Care/Vulu.
 - Do not use in water or as a bath seat.
 - Always use with the feet provided.
 - Always secure child in the restraint.
 - The child should be secured in the booster seat at all times by the restraining system.
- The tray is not designed to hold the child in the chair.
- Never allow a child to push away from table.
 - This product is suitable for the minimum dimension of the adult's chair which the width of 453mm, the depth of 453mm.
 - This product is suitable for the minimum height of 365mm of the adults chair backrest.

Care & Maintenance!

- Sponge clean only.
- Change or repair parts if required. Only use spare parts recommended by Love N Care.
- Clean the booster regularly.
- Excessive exposure to the sun or heat may cause fading of colours or warping of parts.
- When not in use, make sure booster seat is dry and leave in a dry area.
- To wash fabric seat, with cold water and mild soap. Air dry.
- No bleach. Drip dry. Do not put in dryer. Do not iron or dry clean.
- Metal and plastic parts can be wiped clean with a soft damp cloth and dried with a soft cloth. Do not use abrasive cleaners or solvents
- Check the product for loosen screws, worn parts, torn material regularly and replace or repair parts them.

Warranty against defects

All love n care products are guaranteed for twelve months from the date of purchase. Our goods come with guarantees that cannot be excluded under the Australian consumer law.

You are entitled to a replacement or refund for a major failure and for compensation for any other reasonably foreseeable loss or damage. You are also entitled to have the goods repaired or replaced if the goods fail to be of acceptable quality and the failure does not amount to a major failure. This covers against faults which develop through faulty materials and workmanship. Misuse, accidental damages, normal wear and tear or neglect are not covered.

If a fault becomes apparent, please return the item to the store of purchase with your receipt. You must inform the store what the defect is. We will then arrange for its repair or it will be assessed for replacement as expediently as possible. The benefits of this warranty are in addition to other rights and remedies under the law in relation to the goods and services to which this warranty relates.

If you are unable to return the item to the store of purchase, you can contact love n care on freecall 1300732599. We will then organise for either somebody to inspect the item or arrange for a courier to pick it up and return it back to you.

For more information please contact:



Love N Care Pty Ltd

Email: info@lovencare.com.au

Web: www.lovencare.com.au

Phone: 1300 732 599

Fax: 02 9774 4633

Parts

What should be included in the box.



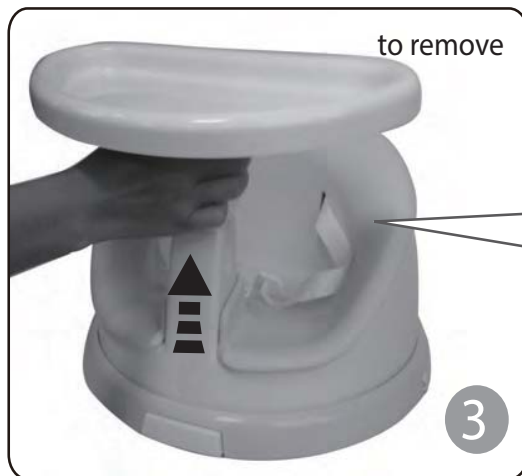
Seat Cushion



Snack Tray

Assembly

Attaching and removing the tray



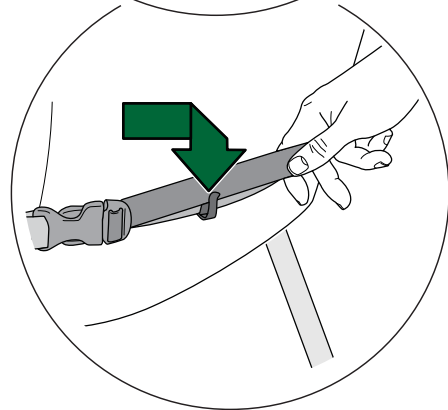
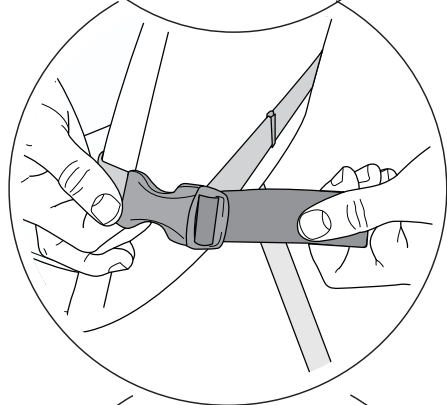
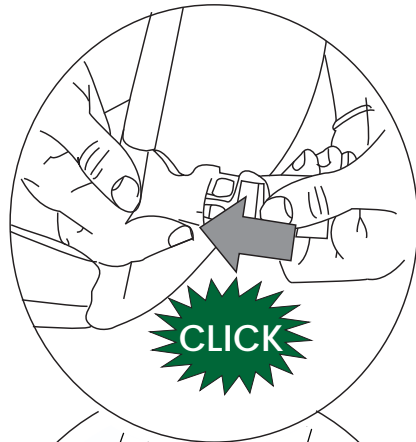
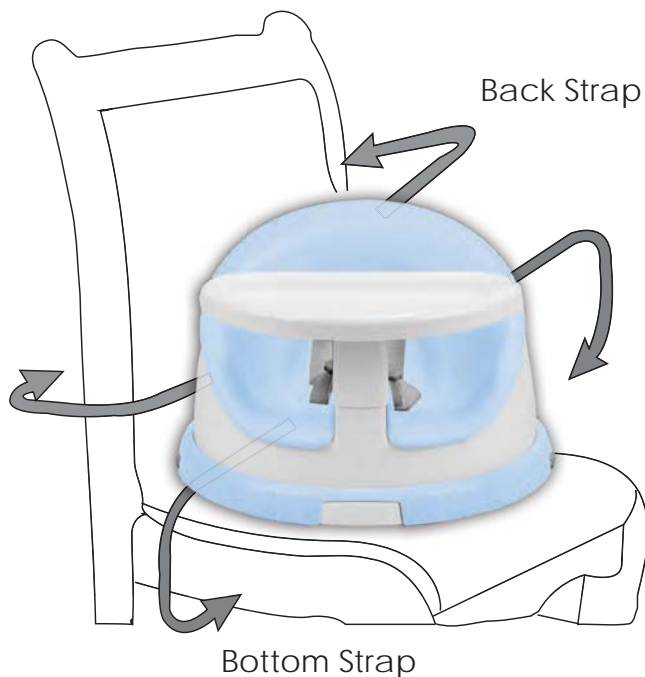
Place the tray into the centre position as shown at point 1. The seat should click into place.

To remove the tray press the buttons located on the centre crotch position located on the tray and lift out as shown at point 3.

Assembly

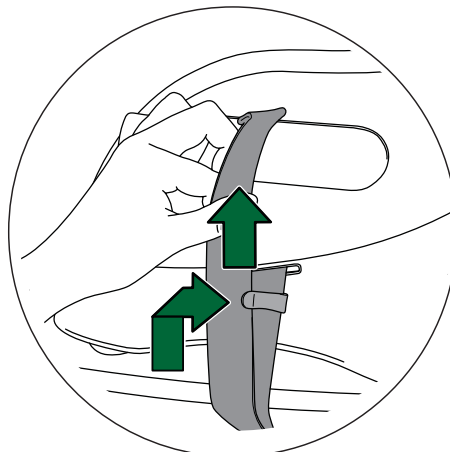
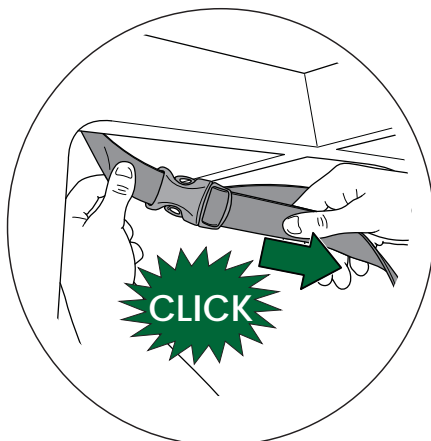
Back Strap Assembly.

1. Wrap the straps around the desired seat, until the buckles meet and click into place.
2. Pull on the straps to tighten so that the seat is nice and firm.
3. Place the straps into the clips on the straps to ensure the straps are not a hazard.



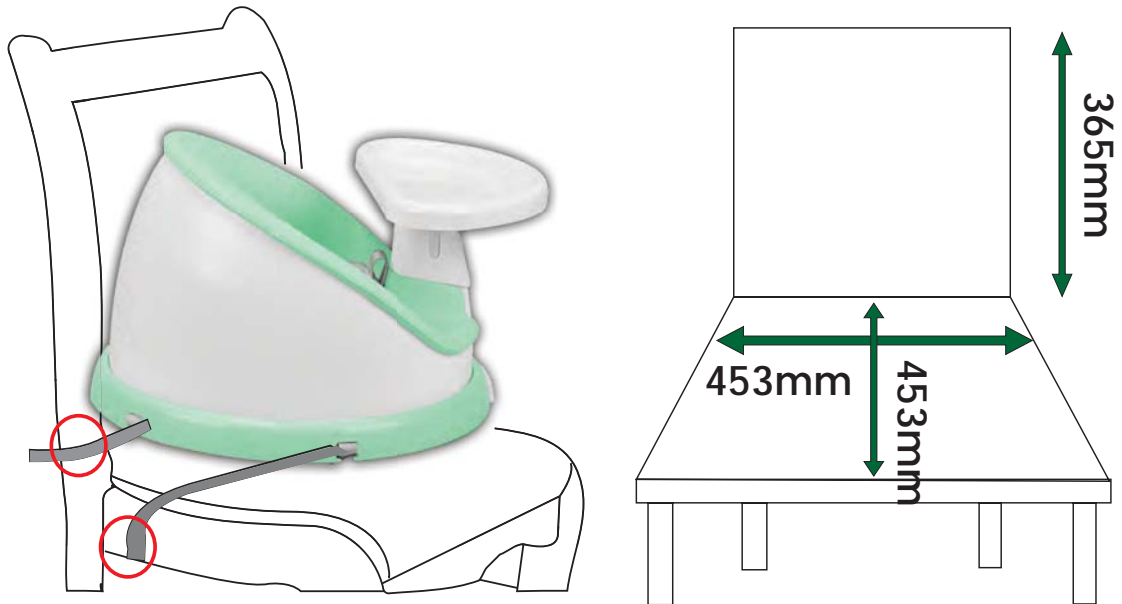
Bottom Strap Assembly.

1. Wrap the straps around the bottom of the seat, until the buckles meet and click into place.
2. Pull on the straps to tighten so that the seat is nice and firm. Place the straps into the clips on the straps to ensure the straps are not a hazard.



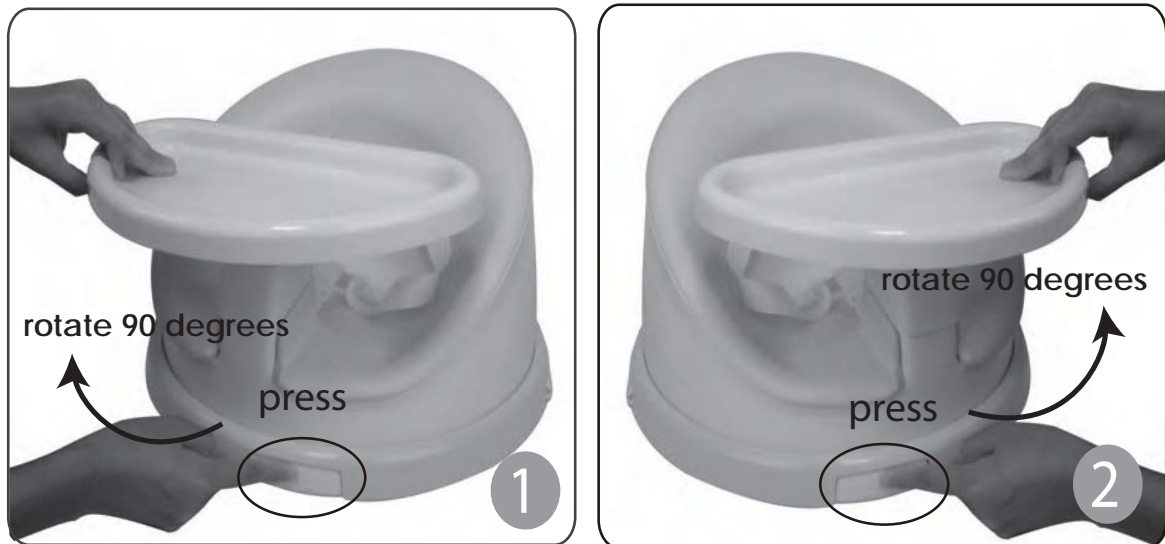
Assembly

Before assembling onto a seat the minimum size of the seat is as below.



Assembly

Seat rotation



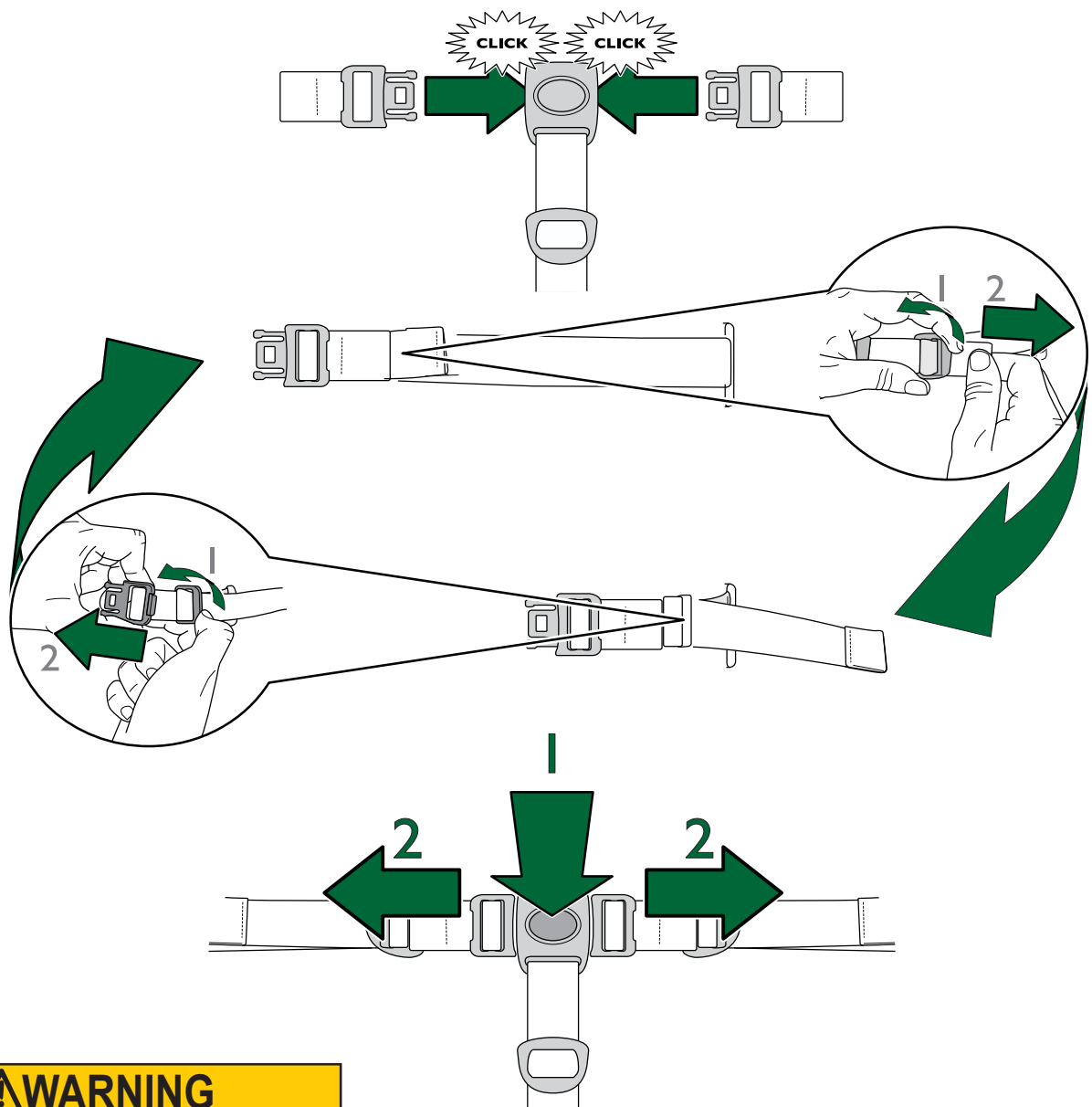
To rotate the seat press the button located on the front of the seat and turn to the desired direction.

Assembly

Harness Assembly



Place the child in the seat and place the left and right side strap buckles into the crotch strap holders. Adjust the sliders on the straps to the required size by pushing



⚠ WARNING

USE THIS HARNESS AT ALL TIMES

Recommended Usage - stages



Stage 1

6 months - 12 months

Fully Assembled



Stage 2

6 months - 18 months

Remove front Tray



Stage 3

12 months - 36 months

Remove cushion and Tray



Contact Us

Head Office:

Love N Care Australia Pty Ltd.
297-299 Canterbury Rd, Revesby
NSW 2212 Australia
Contact No: 02 9774 4655
Fax: 02 9774 4633
Email: info@lovencare.com.au
www.lovencare.com.au

let's be friends!

loveⁿcare™
lovencare.com.au

 <http://www.facebook.com/lovencare1>

 http://twitter.com/love_ncare



100 % AUSTRALIAN OWNED SINCE 1984