

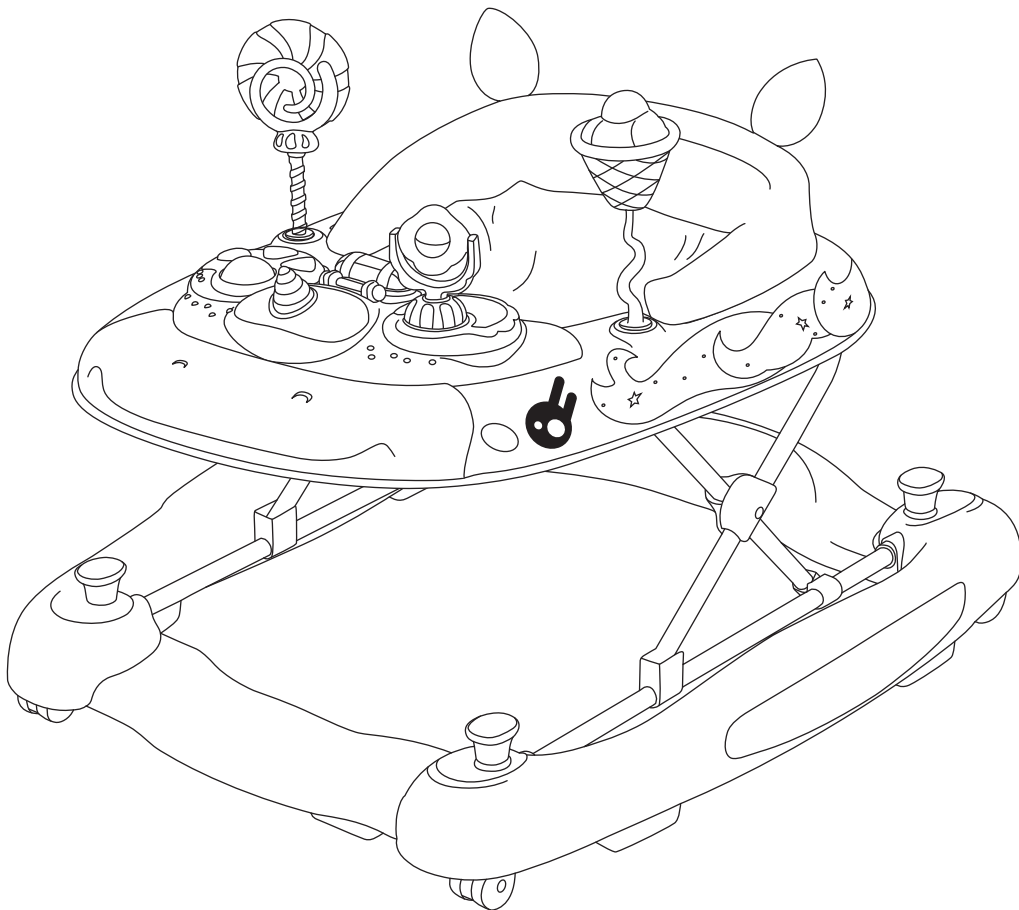
# love<sup>h</sup>care™

## 2in1

WALKER/ ROCKER

# BABY WALKER

# UNICORN



**INSTRUCTION MANUAL**



**WARNING:**

PLEASE READ THESE INSTRUCTIONS CAREFULLY  
BEFORE USE AND RETAIN THEM  
IN A SAFE PLACE FOR FUTURE REFERENCE.  
READ ALL INSTRUCTIONS BEFORE ASSEMBLY  
AND USE OF THE WALKER.  
KEEP INSTRUCTIONS FOR FUTURE USE.  
THE CHILD MAY BE HURT IF YOU DO NOT  
FOLLOW THESE INSTRUCTIONS.



## **WARNING:**

“READ THE INSTRUCTIONS CAREFULLY BEFORE USE AND KEEP THEM FOR FUTURE REFERENCE. THE CHILD MAY BE HURT IF YOU DO NOT FOLLOW THESE INSTRUCTIONS.”

NEVER LEAVE THE CHILD UNATTENDED. ALWAYS KEEP CHILD IN VIEW WHILE IN WALKER.

THE CHILD WILL BE ABLE TO REACH FURTHER AND MOVE RAPIDLY WHEN IN THE BABY WALKING FRAME:

- 1) PREVENT ACCESS TO STAIRS, STEPS AND UNEVEN SURFACES;
- 2) GUARD ALL FIRES, HEATING AND COOKING APPLIANCES;
- 3) REMOVE HOT LIQUIDS, ELECTRICAL FLEXES AND OTHER PORTENTIAL HAZARDS FROM REACH;
- 4) PREVENT COLLISIONS WITH GLASS IN DOORS, WINDOWS AND FURNITURE;
- 5) DO NOT USE THE BABY WALKING FRAME IF ANY COMPONENTS ARE BROKEN OR MISSING;
- 6) THIS BABY WALKING FRAME SHOULD BE USED ONLY FOR SHORT PERIODS OF TIME (E.G. 20 MIN);
- 7) THIS BABY WALKING FRAME IS INTENDED TO BE USED BY CHILDREN WHO CAN SIT UNAIDED, APPROXIMATELY FROM 6 MONTHS TO 36 MONTHS. IT IS NOT INTENDED FOR CHILDREN WEIGHING MORE THAN 12 KG;
- 8) DO NOT USE REPLACEMENT PARTS OTHER THAN THOSE APPROVED BY THE MANUFACTURER OR DISTRIBUTOR;
- 9) USE ONLY ON FLAT SURFACES FREE OF OBJECTS THAT COULD CAUSE THE WALKER TO TIP OVER.
- 10) DO NOT USE THE WALKER IF IT IS DAMAGED OR BROKEN.
- 11) DO NOT USE UNTIL BABY CAN SIT UP BY ITSELF.
- 12) CLEAN (FRICTION COMPONENTS) REGULARLY TO MAINTAIN STOPPING PERFORMANCE.
- 13) TO AVOID BURNS, KEEP THE CHILD AWAY FROM HOT LIQUIDS, RANGES, RADIATORS, SPACE HEATERS, FIREPLACES, ETC.
- 14) THE TOY INTENDED TO BE ASSEMBLED BY AN ADULT.

## **WARNING - STAIR HAZARD**

AVOID SERIOUS INJURY OR DEATH BLOCK STAIRS/STEPS SECURELY BEFORE USING WALKER EVEN WHEN USING PARKING BRAKE.

- A. NON-RECHARGEABLE BATTERIES ARE NOT TO BE RECHARGED.
  - B. DIFFERENT TYPES OF BATTERIES OR NEW AND USED BATTERIES ARE NOT TO BE MIXED.
  - C. EXHAUSTED BATTERIES ARE TO BE REMOVED FROM THE TOY.
  - D. THE SUPPLY TERMINALS ARE NOT TO BE SHORT-CIRCUITED.
  - E. ONLY BATTERIES OF THE SAME OR EQUIVALENT TYPE AS RECOMMENDED ARE TO BE USED.
  - F. BATTERIES ARE TO BE INSERTED WITH THE CORRECT POLARITY.
  - G. HOW TO REMOVE AND INSERT REPLACEABLE BATTERIES.
  - H. RECHARGEABLE BATTERIES ARE TO BE REMOVED FROM THE TOY BEFORE BEING CHARGED.
  - I. IF USING RECHARGEABLE BATTERIES, THE BATTERIES ARE ONLY TO BE CHARGED UNDER ADULT SUPERVISION.
- CARE AND MAINTENANCE

- 1) TO PROLONG THE LIFE OF YOUR NURSERY PRODUCT KEEP IT CLEAN AND DO NOT LEAVE IT IN THE DIRECT SUNLIGHT FOR EXTENDED PERIODS OF TIME.
- 2) REMOVABLE FABRIC COVERS AND PLASTIC PARTS MAY BE CLEANED USING WARM WATER WITH A HOUSEHOLD SOAP OR A MILD DETERGENT. ALLOW IT TO DRY FULLY, PREFERABLY AWAY FROM DIRECT SUNLIGHT.
- 3) CLEAN (FRICTION COMPONENTS) REGULARLY TO MAINTAIN STOPPING PERFORMANCE.

### HELPFUL HINTS

IF THE WHEELS SQUEAK - USE A SILICON BASED SPRAY ENSURING IT PENETRATES THE WHEEL AND AXLE ASSEMBLY. DO NOT DRY CLEAN, OR USE BLEACH.

DO NOT MACHINE WASH, TUMBLE OR SPIN DRY, UNLESS THE CARE LABELLING ON THE PRODUCT PERMITS THESE METHODS.

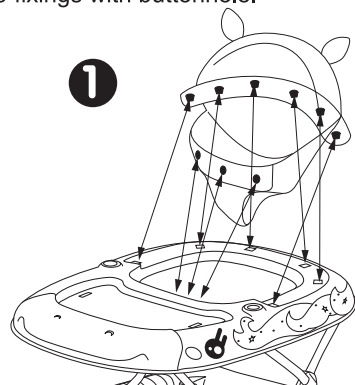
NON REMOVABLE FABRIC COVERS AND TRIMS MAY BE CLEANED USING A DAMP SPONGE WITH SOAP OR MILD DETERGENT. ALLOW IT TO DRY COMPLETELY BEFORE FOLDING OR STORING IT AWAY.

IN SOME CLIMATES THE COVERS AND TRIMS MAY BE AFFECTED BY MOULD AND MILDEW. TO HELP PREVENT THIS OCCURRING, DO NOT FOLD OR STORE THE PRODUCT IF IT IS DAMP OR WET. ALWAYS STORE THE PRODUCT IN A WELL VENTILATED AREA.

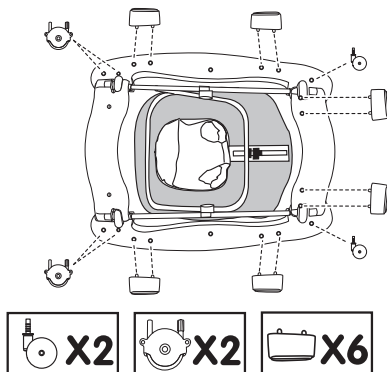
ALWAYS CHECK PARTS REGULARLY FOR TIGHTNESS OF SCREWS, NUTS AND OTHER FASTENERS - TIGHTEN IF REQUIRED. TO MAINTAIN THE SAFETY OF YOUR NURSERY PRODUCT, SEEK PROMPT REPAIRS FOR BENT, TORN, WORN OR BROKEN PARTS.

**A****TO FIT UP THE SEAT**

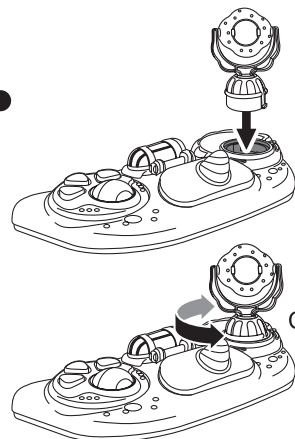
9 fixings with buttonhole.

**2**

Never use the baby-walker without the wheels.

**B****TOY TRAY ASSEMBLY**

CLICK!



CLICK!

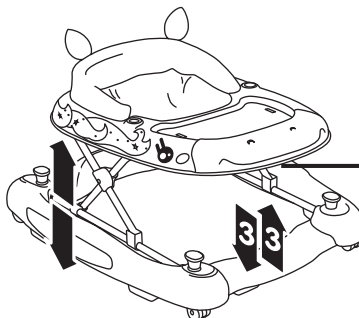
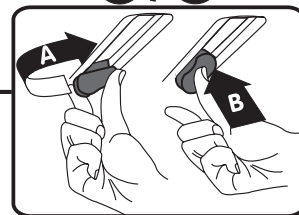
**DO NOT REMOVE TOYS FROM TOY TRAY WHILE IN USE.****C****TO ADJUST**

1 - To unfold the baby walker, remove the tray from the base.

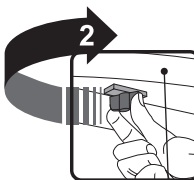
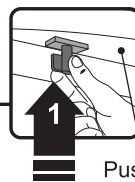
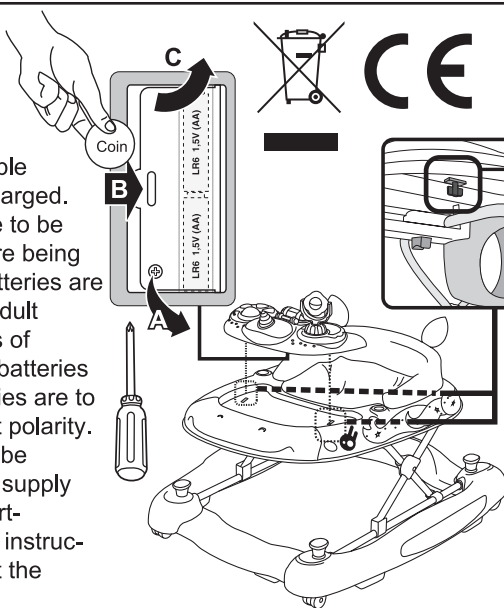
2 - To adjust the height, turn the button then press it.

The position locks automatically when you release the button.

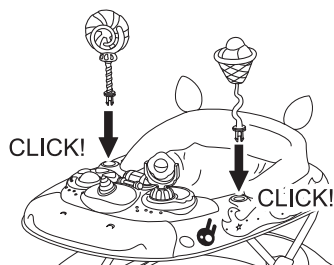
3 - To fold the baby walker back down: turn the button, press it and lower the tray towards the base.

**1/2****D****TO FIT THE TRAY**• **Battery not supplied**

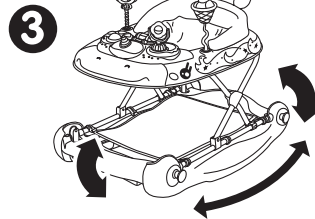
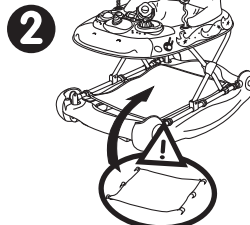
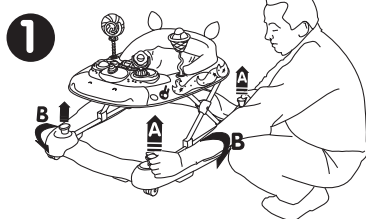
**CAUTION!** Non-rechargeable batteries are not to be recharged. Rechargeable batteries are to be removed from the toy before being charged. Rechargeable batteries are only to be charged under adult supervision. Different types of batteries or new and used batteries are not to be mixed. Batteries are to be inserted with the correct polarity. Exhausted batteries are to be removed from the toy. The supply terminals are not to be short-circuited. Please follow the instructions to remove and insert the batteries

**E****TOYS ASSEMBLY**

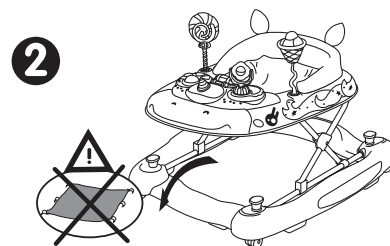
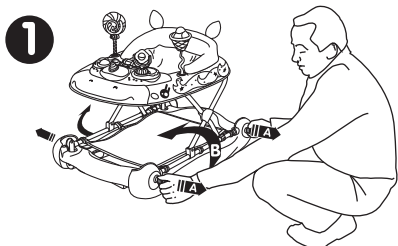
Align key on toy to notch in sockets.

**F****USE AS A ROCKER**

Do not use without carpet.

**G****USE AS A BABY WALKER**

Remove carpet.

**WARNING:**

• NEVER LEAVE THE CHILD UNATTENDED.

• NOT SUITABLE FOR CHILDREN ABLE TO WALK.

• SUITABLE FOR CHILD BETWEEN 6-36 MONTHS.

• NOT SUITABLE FOR CHILDREN WHO ARE UNABLE TO SIT UP UNAIDED.

• NOT APPROPRIATE FOR CHILDREN WEIGHING OVER 12 KG.

# Warranty against defects

All Love N Care products are guaranteed for twelve months from the date of purchase. Our goods come with guarantees that cannot be excluded under the Australian Consumer Law. You are entitled to a replacement or refund for a major failure and for compensation for any other reasonably foreseeable loss or damage.

You are also entitled to have the goods repaired or replaced if the goods fail to be of acceptable quality and the failure does not amount to a major failure.

This covers against faults which develop through faulty materials and workmanship. Misuse, accidental damages, normal wear and tear or neglect are not covered.

If a fault becomes apparent, please return the item to the store of purchase with your receipt. You must inform the store what the defect is. We will then arrange for its repair or it will be assessed for replacement as expediently as possible. The benefits of this warranty are in addition to other right and remedies under the law in relation to the goods or services to which this warranty relates.

If you are unable to return the item to the store of purchase, you can contact Love N Care on free call 1300 732 599.

Where you send the product directly to the manufacturer then you may be liable for the costs of transportation to and from Love N Care.

Love N Care will meet the reasonable expenses incurred by a consumer in making a warranty claim. You can claim expenses incurred in making a claim by contacting our customer service team on 1300 732 599 or by email at [info@lovenecare.com.au](mailto:info@lovenecare.com.au)



## WARNING

- Never Leave Child Unattended
- Always keep child in View while in walker
- Use only on flat surfaces free of objects that could cause the walker to tip over.
- To avoid burns, keep the child away from hot liquids, ranges, radiators, space heaters, fireplaces, etc.
- Warning: Parking brake use does not totally prevent walker movement. Always keep child in view when in the walker, even when using the parking brakes



## WARNING - STAIR HAZARD

Avoid Serious injury or death  
Block stairs/steps securely before using  
walker even when using parking brake

# Contact Us

## Head Office:

Love N Care Australia Pty Ltd.  
297-299 Canterbury Rd, Revesby  
NSW 2212 Australia  
Contact No: 02 9774 4655  
Fax: 02 9774 4633  
Email: [info@lovenecare.com.au](mailto:info@lovenecare.com.au)  
[www.lovenecare.com.au](http://www.lovenecare.com.au)



<https://www.facebook.com/lovenecare1/>



[https://twitter.com/love\\_ncare](https://twitter.com/love_ncare)