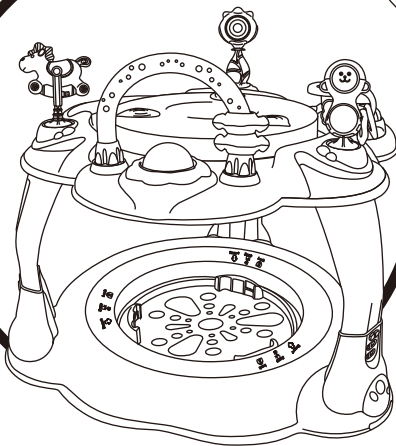
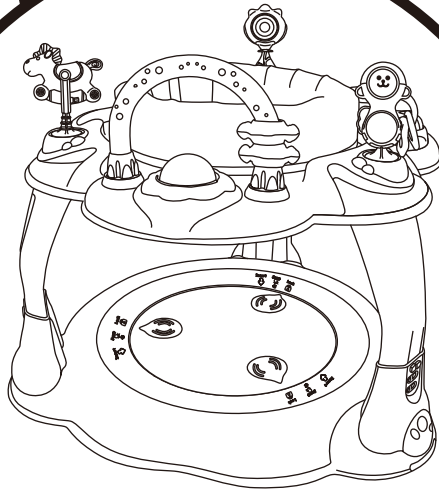


# love<sup>h</sup>care™

BP 572

**ACTIVITY  
CENTRE**



**INSTRUCTION MANUAL**

**IMPORTANT! KEEP FOR FUTURE REFERENCE**

# WARNING

## TO PREVENT SERIOUS INJURY OR DEATH:

- Use the activity centre only if the child meets all of the following conditions:
  - \_ is at least four(4) months of age
  - \_ can sit up by him or herself
  - \_ is less than 30" tall (76.2cm)
  - \_ weighs less than 25 lbs. (11kg)
- DO NOT allow children who can stand or walk on their own to use the activity centre.
- Do not use the activity centre in dangerous conditions or situations:
  - NEVER leave child unattended in the activity centre. ALWAYS keep child in view while child is in the product.
  - NEVER move the unit while the child is in the seat.
  - It can be dangerous to allow other children to play near the activity centre.
  - DO NOT add any strings or straps to any part of the activity centre.
  - Strings can cause strangulation! DO NOT place items with a string around child's neck, such as hood strings or pacifier (dummy) cords. DO NOT suspend string over product or attach strings to toys.
  - DO NOT use any hardware other than that supplied.
  - ONLY use with the jump platform attached.
- **FALL HAZARD:**

DO NOT place the activity centre on an elevated surface. A child's movement can slide the activity centre.

NEVER use near stairs.

To avoid tip-over, place the activity centre on a flat, level floor.

For indoor use only.
- Children can play inside the activity centre only when platform is being installed into the base.

## CAUTION

- This product contains small parts. Adult assembly required.

## IMPORTANT

- Care should be taken in unpacking and assembly.
- Examine product frequently for damaged, missing, or loose parts.
- Do not use product if damaged or broken.

# MAINTAIN AND CLEAN

## TO WASH THE FABRIC SEAT

Machine wash the fabric seat in cold water.

Use a gentle wash cycle with no bleach.

Tumble dry, using low heat.

## TO CLEAN THE PLASTIC PARTS

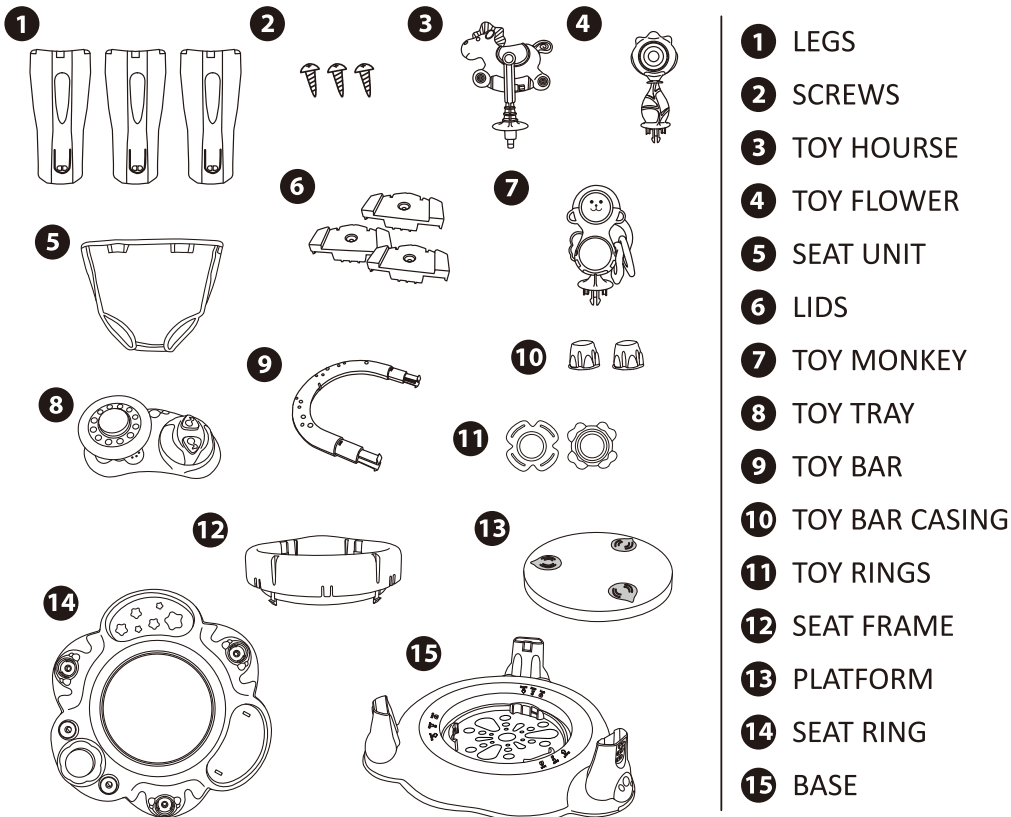
Wipe clean with damp cloth and mild soap. Air dry. Do not immerse in water.

Clean toys before use. Not dishwasher safe.

## PRODUCT STORAGE

1. Store the product at dry place without sun exposure.
2. Cover the product with fabric.
3. Keep this manual for future reference.

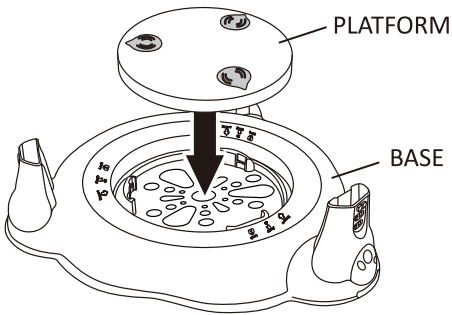
## PARTS LIST



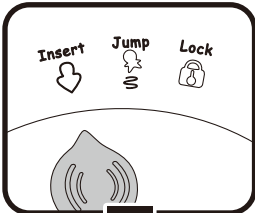
# INSTRUCTION

## 1 BASE ASSEMBLY

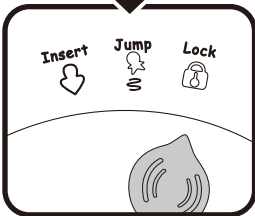
- Put the platform on the notch.



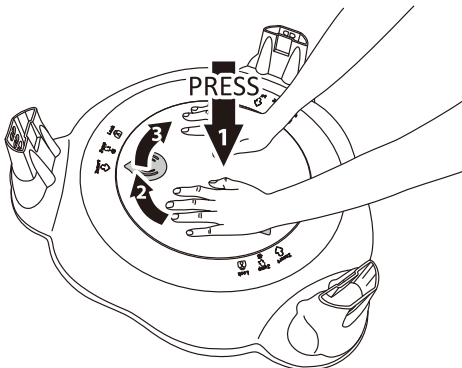
- Lock the platform.



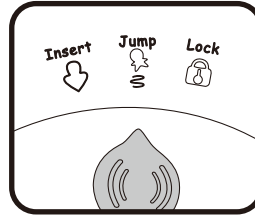
Put on the platform arrows point at "Insert".



Press and turn right at the same time. Arrows point at "Lock" to lock the platform.



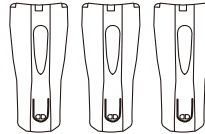
- Jump function



Turn the arrows to "Jump".

## 2 LEGS ASSEMBLY

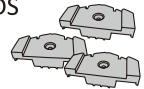
LEGS



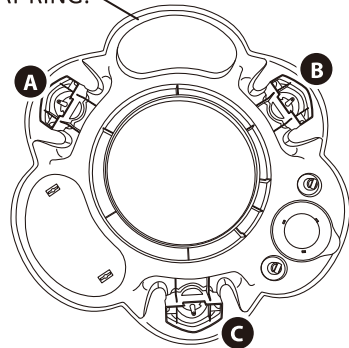
SCREWS



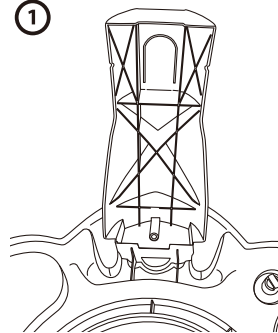
LIDS



BOTTOM OF SEAT RING.



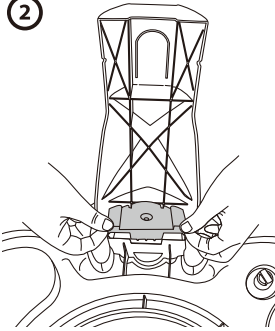
1



Legs put on the three position A B & C.

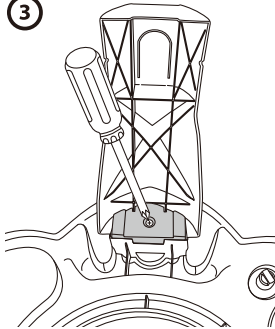
# INSTRUCTION

②



Put on the lid.

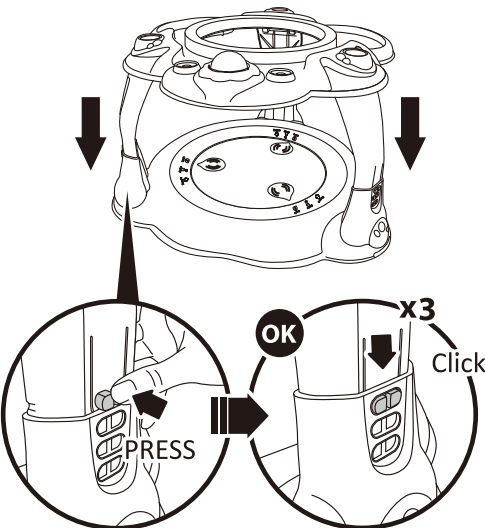
③



Fasten legs and lids with screw.

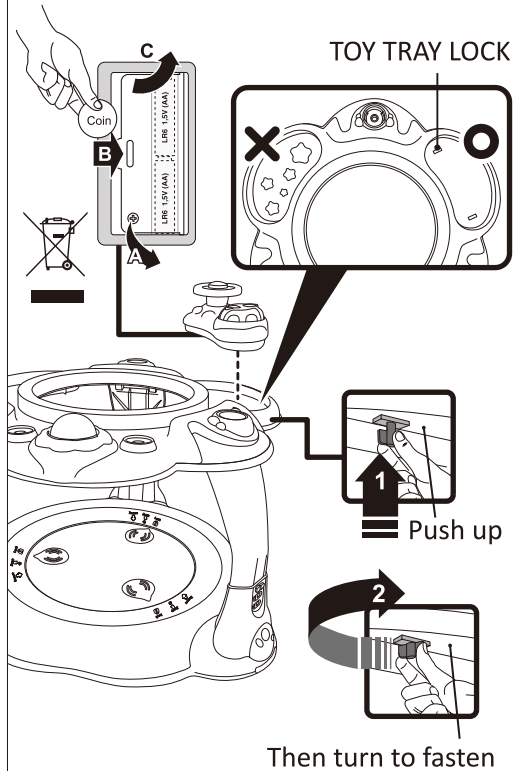
## ③ SEAT RING & BASE ASSEMBLY

After fasten the legs, insert 3 legs into base until hear "Click" sound.



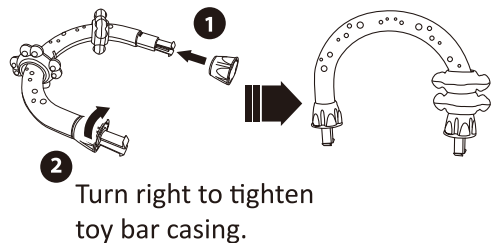
## ④ TOY TRAY ASSEMBLY

Put toy tray on the notch with locks.



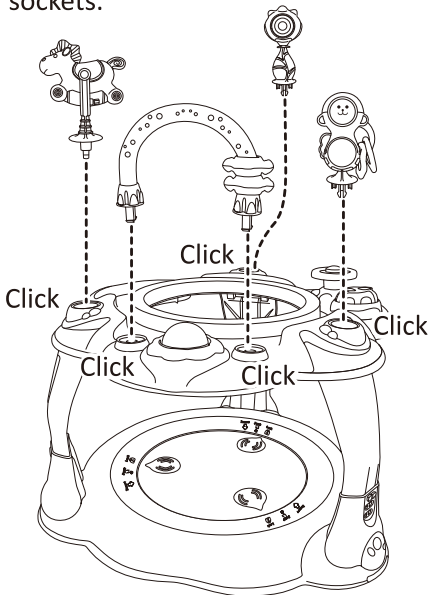
## ⑤ TOYS ASSEMBLY

• Put toy rings through the U shape bar.

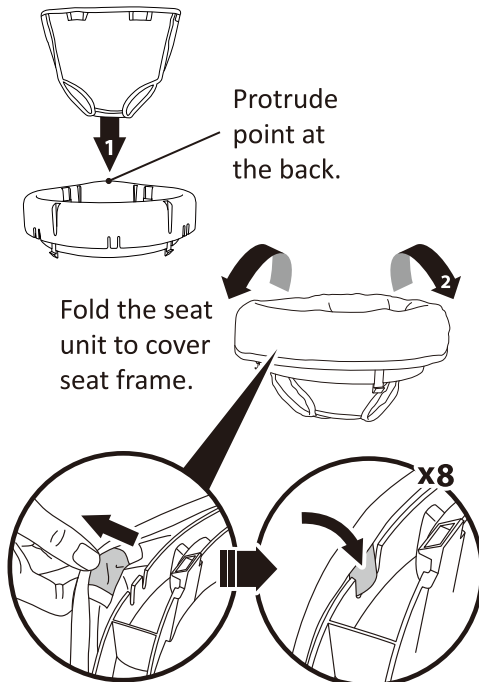


# INSTRUCTION

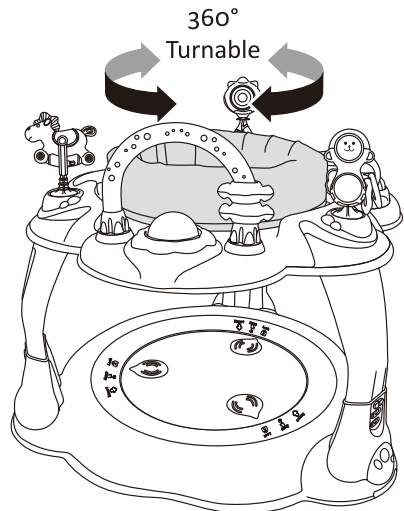
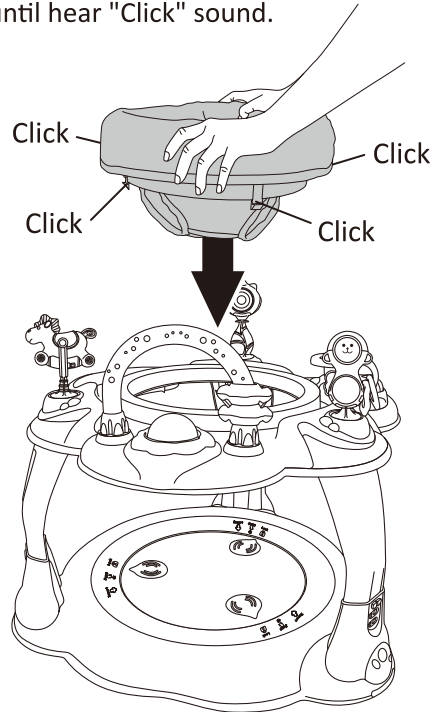
- Align key on toy to notch in sockets.



## 6 SEAT UNIT ASSEMBLY



Put seat frame on seat ring, press until hear "Click" sound.

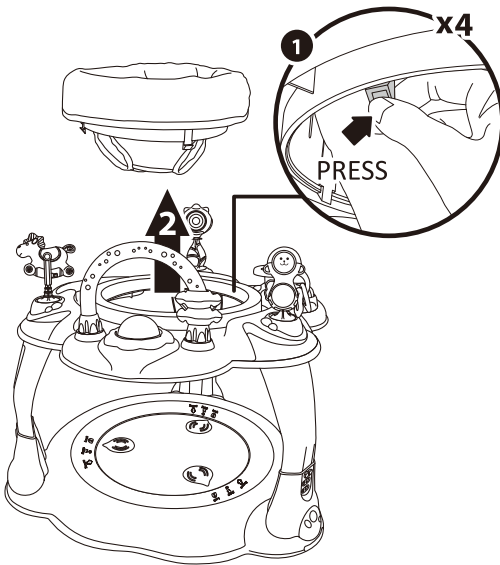


### ⚠ ATTENTION

Children can play inside the activity centre only when platform is being installed into the base.

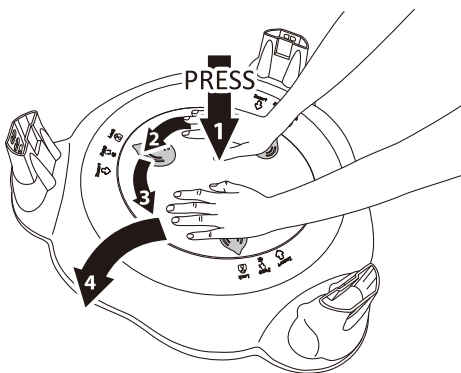
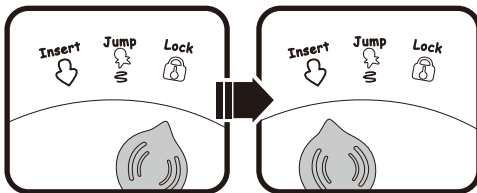
# INSTRUCTION

## 7 SEAT FRAME UNASSEMBLY

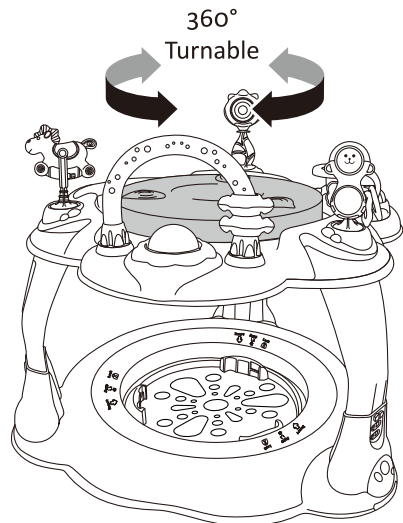
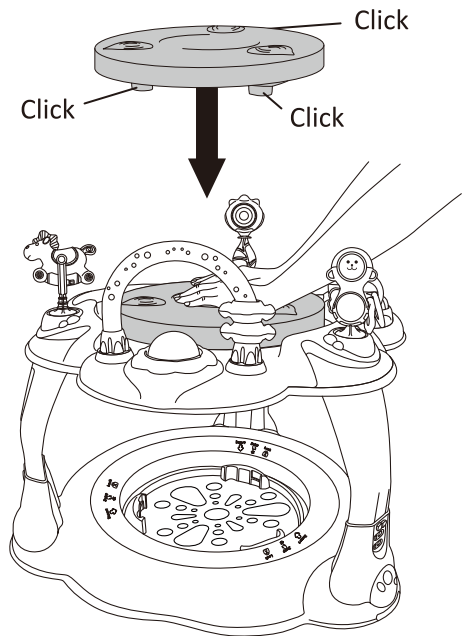


## 8 PLATFORM UNASSEMBLY

Press the plate and turn left to "Insert" to take off the platform.

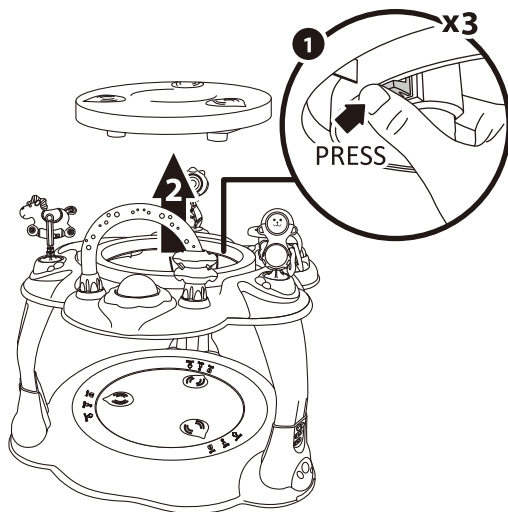


## 9 PUT THE PLATFORM ON THE SEAT RING AS A PLAY TABLE

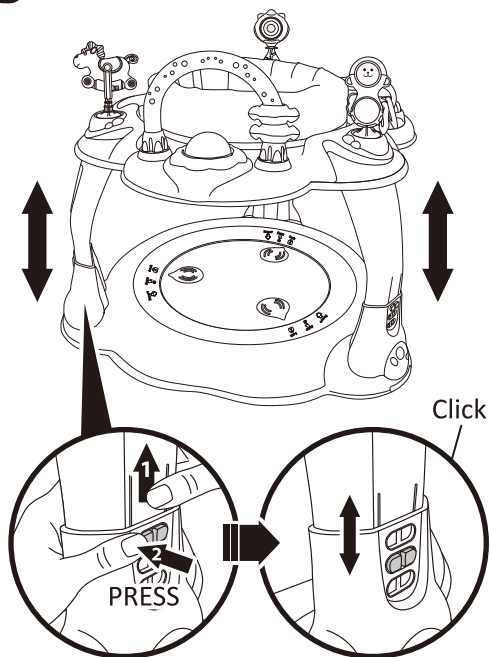


# INSTRUCTION

## 10 TAKE OFF THE PLATFORM



## 11 HEIGHT ADJUST



Use your thumb to press the button and press down until a “Click” sound. Press the button to adjust 3 section height.

## WARNING

### WARRANTY AGAINST DEFECTS.

All Love N Care products are guaranteed for twelve months from the date of purchase. Our goods come with guarantees that cannot be excluded under the Australian Consumer Law. You are entitled to a replacement or refund for a major failure and for compensation for any other reasonably foreseeable loss or damage. you are also entitled to have the goods repaired or replaced if the goods fail to be of acceptable quality and the failure does not amount to a major failure. This covers against faults which develop through faulty materials and workmanship.

Misuse, accidental damages, normal wear and tear or neglect are not covered. If a fault becomes apparent, please return the item to the store of purchase with your receipt. You must inform the store what the defect is. We will then arrange for its repair or it will be assessed for replacement as expediently as possible. The benefits of this warranty are in addition to other right and remedies under the law in relation to the goods or services to which this warranty relates. If you are unable to return the item to the store of purchase, you can contact Love N Care on free call 1300 732 599. We will then organise for either somebody to inspect the item or arrange for a courier to pick it up and return it back to you.

### 12 MONTH WARRANTY

Please fill in this section to validate your warranty and send to: **297 Canterbury Rd Revesby NSW 2212**

Name: \_\_\_\_\_

Address: \_\_\_\_\_

Product Name/No. \_\_\_\_\_

Store Purchased: \_\_\_\_\_

Date Purchased: \_\_\_\_\_





## Contact Us

### Head Office:

Love N Care Pty Ltd.  
297-299 Canterbury Rd, Revesby  
NSW 2212 Australia  
Contact No: 02 9774 4655  
Fax: 02 9774 4633  
Email: [info@lovencare.com.au](mailto:info@lovencare.com.au)  
Website: [www.lovencare.com.au](http://www.lovencare.com.au)

Brisbane  
7-9 Eileen Street  
Underwood QLD 4119 Australia  
Contact No: 07 3290 4217  
Fax: 07 3209 5019

Western Australia  
5 Modal Crescent  
Canning Vale WA 6155 Australia  
Contact No: 08 9455 4972  
Fax: 08 9455 4728

let's be friends!

 <http://www.facebook.com/lovencare1>

 [http://twitter.com/love\\_ncare](http://twitter.com/love_ncare)



100 % AUSTRALIAN OWNED SINCE 1984

**lovehncare™**  
[lovencare.com.au](http://lovencare.com.au)