



Instructions for Nova Stroller & Carry Cot
BP 9759/ BP 9760

info@lovenccare.com.au
www.lovenccare.com.au



Congratulations on your new quality Love N Care product from our exclusive range of baby products. This exceptional design combines the most unique features that any baby product offers.

We are confident that you will appreciate its many highlights, including its reliability and durability. Your new product has been manufactured to comply with the Highest Quality Standards and comes with a 12-month warranty.

As you will soon learn there are many more great features about your new Love N Care product.

Maximum weight capacity of Nova Stroller should not exceed 20KG
Complies with: [AS/NZ 2088:2000](#) and [EN1888](#)

Safety guidelines and instructions must always be followed before making use of this product, please retain these instructions for future reference:

WARNING:

- Always make sure the stroller is completely opened and locked before using.
- Never leave your child unattended in the stroller
- Do not use the stroller on stairways or escalators.
- This stroller is not a toy, do not allow children to climb into the stroller unassisted as this may cause the stroller to tip over and cause injury to your child.
- To avoid serious injury always use the harness provided to secure child.
- Periodically check the restraint system to make sure it is secured.
- Care should be taken while folding and unfolding stroller to prevent finger entrapment.
- Ensure your child's fingers, hands and all other body parts are clear from any moving part when adjusting the seat or handle on your stroller.
- Basket maximum weight should not exceed 5kg.
- Discontinue use of the stroller should it become damaged.
- Missing parts and damaged parts should be replaced immediately to prevent any injuries.

CARE AND MAINTENANCE:

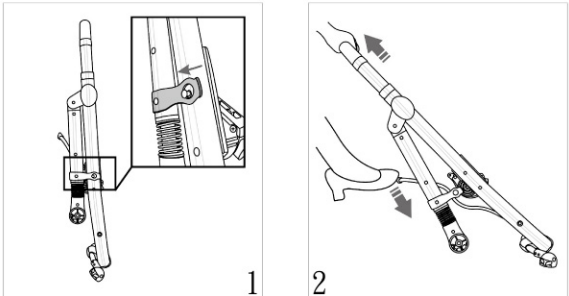
The life of most products depends on the care and maintenance undertaken during their use. As your pram is used throughout most of your baby's first couple of years, it is important to care for your product to ensure that it lasts for the full term of use and be stored away for your next child.

In order to do this you must service your pram on a regular basis. To do this simply follow the steps below:

- Excessive dirt in the front and back wheels can make moving your stroller difficult and can cause the wheels to fall off or become damaged. To clean them remove them from the frame and place in warm soapy water, using a small brush to clean them. Once they are clean and dry re-attach them to the frame and use either sewing machine oil or WD-40 to lubricate all the metal joints.
- Never store your stroller in direct sunlight, as UV rays can cause the fabric to fade very quickly, especially dark colours. All fabrics should be washed in a non-bleach based detergent and are to be hand washed only. Do not hang in direct sunlight to dry.
- Metal parts should be dry before storing away. Wiping with a dry cloth after exposure to rain is recommended. Aluminum should be cleaned occasionally with a mild detergent and wiped dry.

To Open The Stroller:

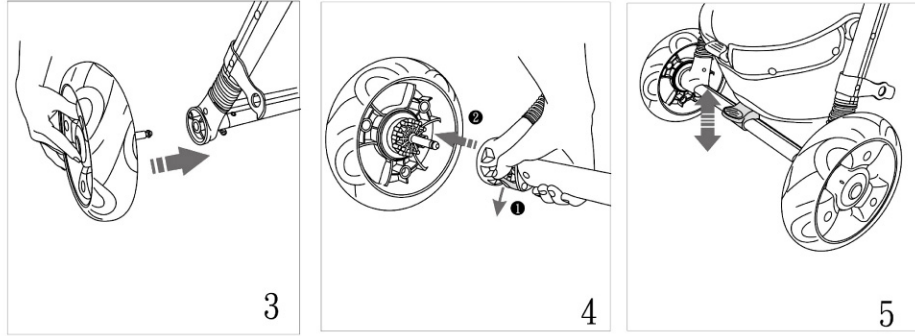
- Remove pram from the box and place all accessories to one side.
- Unlock the locking clip, located on the side of the pram (As shown in Fig 1)
- While holding the handle bars place your foot on the back axel and lift the pram up, until you hear it click into place on both sides. (As shown in Fig 2)



Inserting the wheels:

Rear Wheels

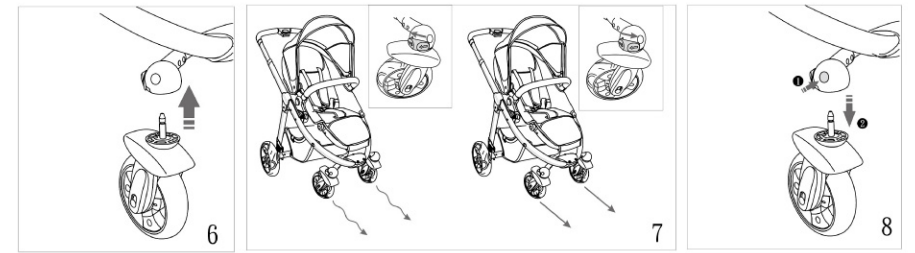
- **Insert** the back wheels by simply pushing them into the housing on the axel until they click in. Test the wheels by trying to pull on them to see if they fall off. (As shown in Fig 3) Repeat on second wheel.
- To **remove** the rear wheels, simply press the quick release pin on the rear block of the wheel and pull out. (As shown in Fig 4)
- To **lock** the back wheels, simply push down the **centre red pedal in the rear axel**, push up to release the brake. (As shown in Fig 5)



Note: Always ensure the brakes are on when putting or removing a child from the pram or when stopping the pram.

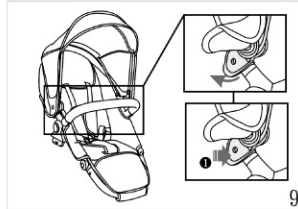
Front Wheels

- **Insert** the front wheels by inserting them into the front housing by pushing on the button until you hear it click into place. Test each wheel to make sure they have been inserted properly. (As shown in Fig 6)
- To **fix** the front wheels, make sure the wheels are facing the rear, turn the button located on top of each front wheel to lock wheels, to swivel wheels simply turn button back in reverse position. (As shown in Fig 7)
- To **remove** the front wheels simply press the quick release button at the front and remove wheels. (As shown in Fig 8)



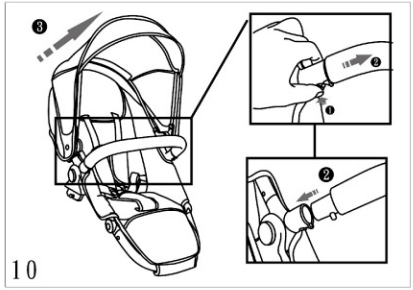
Attaching the Hood:

- Attach the hood by clipping into the housing located on the frame.
- To remove the hood squeeze on the button located on frame of hood and pull out. (As shown in Fig 9)
- The hood can be adjusted forward or backwards to suit your desired position, there is also a window canopy for your convenience which allows you to see your baby at all times.



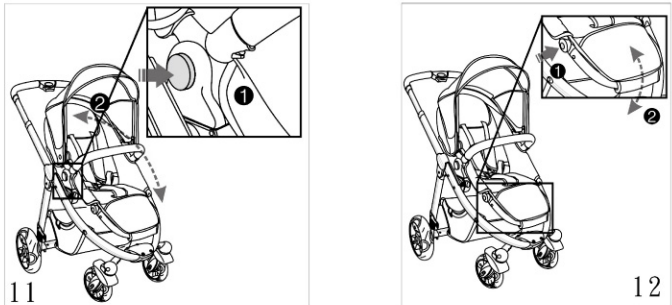
Attaching the Front Bumper Bar:

- Insert the bumper bar into the frame of the seat and click into place.
- To remove the bumper bar, simply push on either side the small oval shaped button and lift out. (As shown in Fig 10)



To adjust the Backrest & Footrest:

- To recline the back rest press both side buttons located on side of seat frame up or down until you reach your desired position. (As shown in Fig 11)
- To adjust the footrest simply press the side buttons located on the side of the footrest and push up or down until you reach your desired position. (As shown in Fig 12)

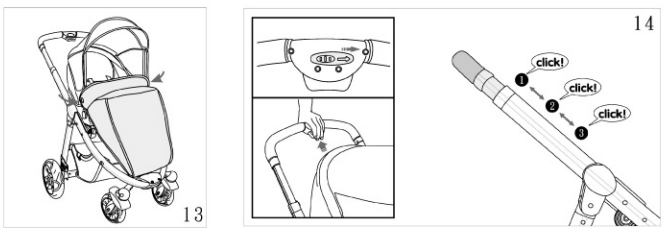


To Attach the Boot Cover:

- To attach the boot cover simply snap each press stud together ensuring the boot cover is fitted correctly. (As shown in Fig 13)

To Adjust the Handle Height:

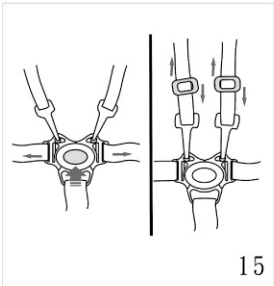
- To adjust the handle simply **slide the red catch on underside of handle** and push the **RED** button located on the inside of the handle, **then** side and move down or up to your desired position. (As shown in Fig 14)



To Adjust the Harness:

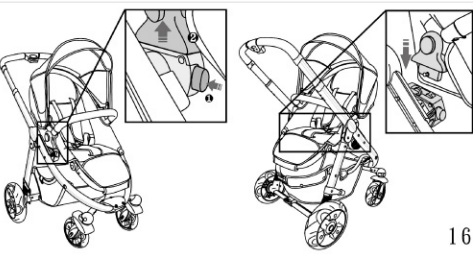
This stroller has been designed with a 5 – point harness for the safety of your child, your child must always be secured in this harness whilst in use. (As shown in Fig 15)

- The safety harness is adjustable, and to release the harness you should press the buckle at either side to remove it.
- To secure the harness push the buckles in, you will hear a click which means the harness has been secured.
- To adjust the harness simply thread and tighten accordingly to suit your child.



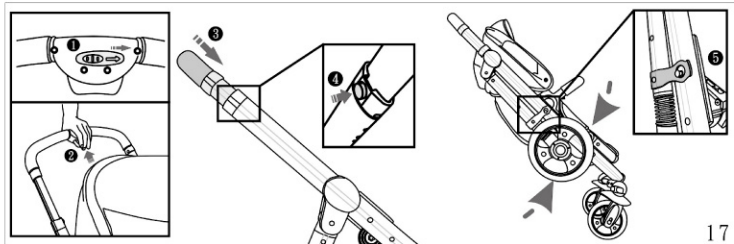
To Reverse The Seat:

- On the frame of the seat push the button labeled "1" at both sides and lift the seat up from "2", turn the seat around so it is facing you, insert the **Guide Pins** back into place and ensure they are correctly fitted before placing your child in the seat. (As shown in Fig16)



To Close the Stroller:

- Standing behind the pram, simply slide the red catch on underside of handle and push the **RED** button located on the inside of the handle, then side and move down until it stops. Press the secondary safety lock button located on the side of the handle, continue closing the pram until it automatically locks. (As shown in Fig 17)

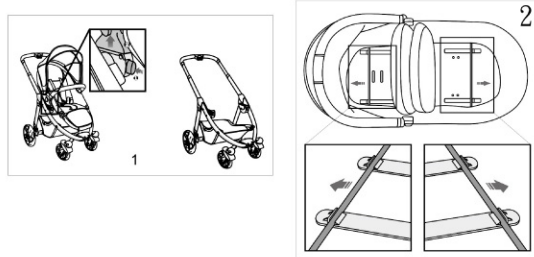


To Attach the Carry Cot:

To attach the carry cot you must first remove the seat to do this simply follow these instructions:

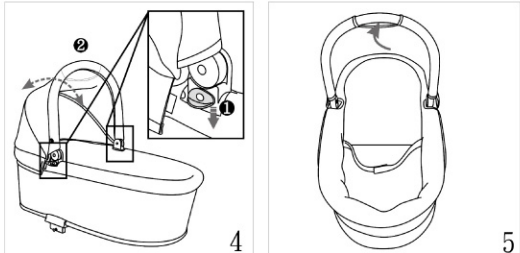
- At the front of the seat near the frame on each side there is a black button, push the left button in first then push in the right side button and lift the seat from the frame. Put seat away. (As shown in Fig 1)
- To attach the carry cot simply pull out the two side clamps and the middle support bar and place the carry cot in the middle of the frame so that each metal pin fits and clips in correctly to the openings on each side of the frame. (As shown in Fig 2)
- Take the support bar and recline out so that you can attach it to the top part of the basket, make sure it clicks into place before proceeding. (As shown in Fig 3)

NOTE: The Carry Cot is only designed to fit in the Facing forward position.



To adjust the hood

- To adjust the hood simply push the button located on the left front side of the hood and simply push back or forward to your desired position. (As shown in Fig 4)
- The hood section on the front can also be used as a carry handle make sure to only carry the Bassinette from the handle part and no other section of the hood. (As shown in Fig 5)

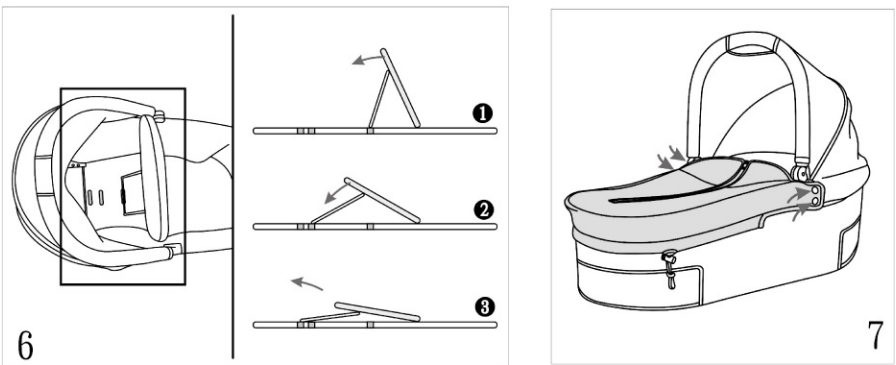


To Adjust the Backrest:

- Using the black strap located at the top end of the mattress lift up and then place the support bar into the desired position by clicking the bar into the correct opening on the board. Make sure it clicks into place before proceeding. (As shown in Fig 6)

To Attach the Boot Cover:

- Slide the boot cover over the front of the carry cot and securely attach each press studs to those on the hood section. (As shown in Fig 7)



Another reliable product from Love N Care
Excellence ♥ Intelligence ♥ Caring

Contact Us:

1300 732 599