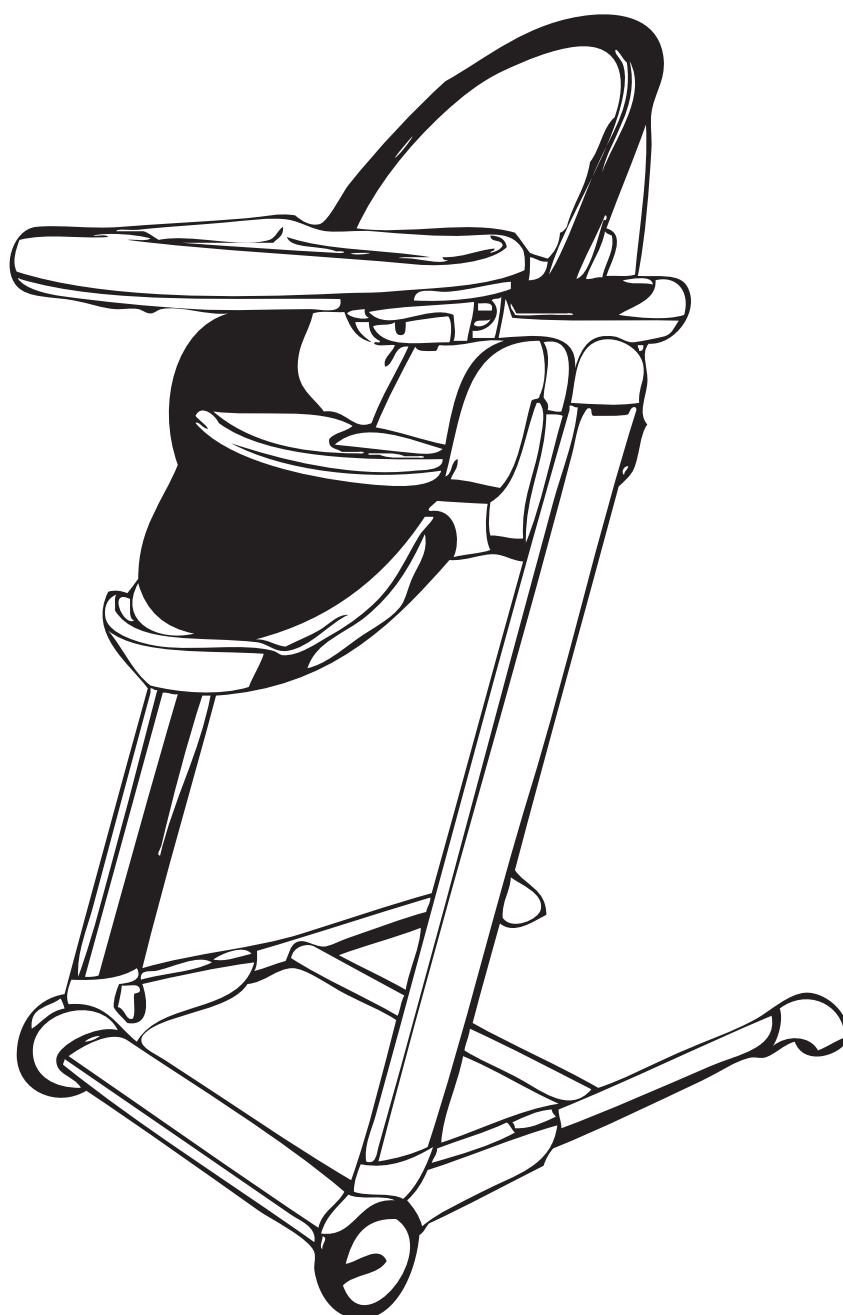


BP 893

pandora highchair



PLEASE KEEP INSTRUCTIONS FOR FUTURE REFERENCE



Congratulations on purchasing your new Vulu Highchair
In under an hour you should be able to have this one of kind highchair ready to meet your beautiful child :)





WARNING!



Before assembling this highchair read and understand the instructions. Incorrect assembly may make the highchair unsafe. Do not use this highchair if any part is broken, torn or missing. Keep these instructions in a safe place for future reference.



WARNING! FALL HAZARD

- Follow the manufacturer's instructions.
- Never leave the child unattended.
- Hold the child securely at all times when putting the child into the chair or taking him or her out of it. Make sure that the food tray is in the locked position before you let go of the child.
- Always adjust the safety table snugly against the child to prevent the child from climbing out of the high chair.
- The child must not sit in the high chair when the safety tray is in the open position.
- The high chair is not a toy. Never let children play with the chair or use it by themselves.
- Never attempt to move the high chair while the child is still in the chair.
- The high chair should be placed on a level, horizontal floor. To avoid the risk of the high chair tipping over, make sure that the chair's feet can slide on the floor.
- Do not use the high chair unless all components are correctly fitted and adjusted.
- Be aware of the risk of open fire and other sources of strong heat, such as electric bar fires, gas fires etc., in the vicinity of the high chair.
- To avoid the risk of pinching, ensure that the child is wearing – at a minimum – a diaper or trousers when sitting in the high chair.
- Never push down on the safety table - doing so risks pinching the knees of larger children.
- Do not use the high chair until the child can sit up unaided.
- Do not use the high chair if any component is broken or missing. Contact Love N Care for repair advice.
- A child's safety is your responsibility
- The child should be secured in the baby chair at all times by the 5-point safety harness in the upright position.

- Keep the highchair away from open fire, heaters and other sources of strong heat.
 - Always use the safety harness.
 - Always be sure your child is clear of the highchair's moving parts before making adjustments.
 - Check the highchair regularly for damage and to ensure that the harness is secure and performs correctly.
 - Always check the tray is securely locked in place by attempting to pull it free of the highchair.
 - IMPORTANT: Every time you place your child in the highchair or whenever you alter the position of the seat, always check that the harness is correctly fitted. Tighten the harness until it fits snugly around your child.
 - Check that all safety locks are engaged before placing a child in the highchair
 - This child is not recommended for a child under 6 months old.
 - Do not allow children to stand on the seat or footrest or climb into or out of the highchair.
 - The weight of the child using this highchair should not exceed 18kg and up to 36 months.
- To reduce the risk of injury, position the highchair away from furniture, walls, hot surfaces, liquids, window covering cords and electricals cords.

CARE AND MAINTENANCE



WARNINGS: Using an effective disinfectant, for examples cleaners with alcohol or chlorine content, may cause bleaching and discoloration, it is recommended to use cleaners specifically designed for colored fabric. spot clean the Love N Care seat pad.

The Highchair can be cleaned with a sponge using lukewarm water and a light detergent. Strong stains can be removed using non-abrasive cleaning cream. Moving parts can be lubricated with some light silicon oil.

Parts List

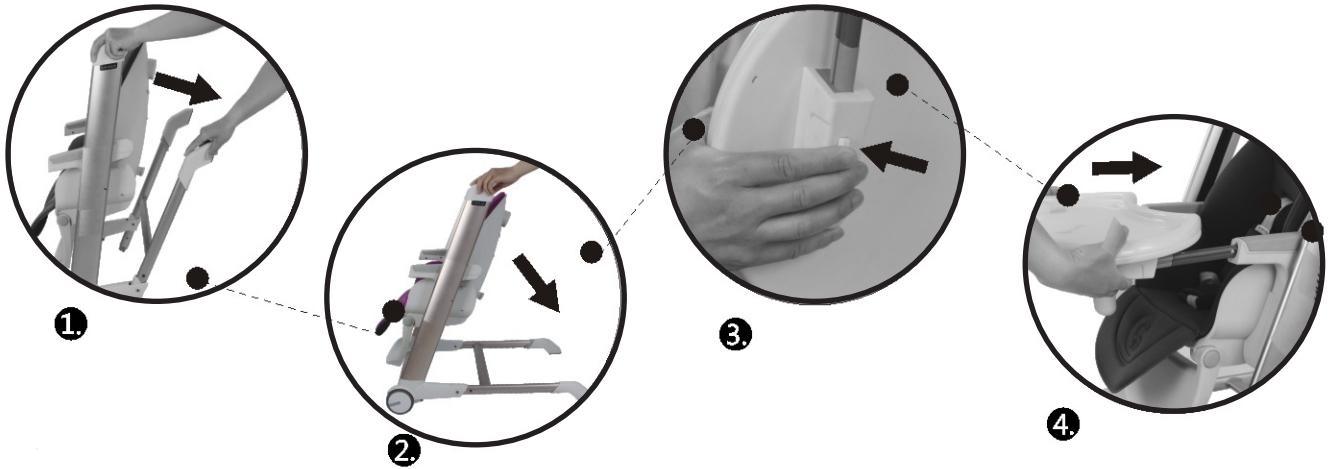
MAIN FRAME



TRAY



Assembly



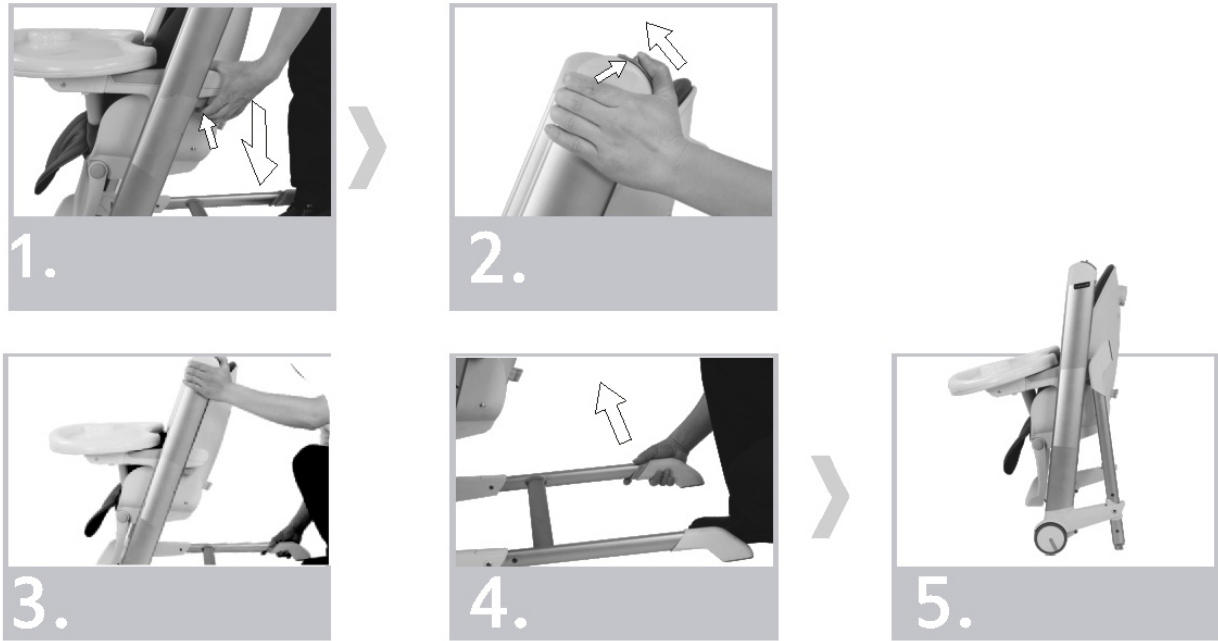
1. Open the frame: Pull the rear legs downwards.
2. The legs would be assembled when it is pulled down and you can hear it click into place.
3. Attaching the Tray: Press the button under the tray as shown in Pic 3.
4. Place the rods at the end of the tray into the holders located on the highchair frame as shown in Pic 4.



5. Seat height adjustment: Place one foot on the base of the highchair and then press the seat adjuster located on both sides of the frame. You can then pull the seat up or down according to the desired height.
6. Footrest adjustment: to adjust the footrest press the buttons located on each side of the footrest and adjust to the desired position.

How to use

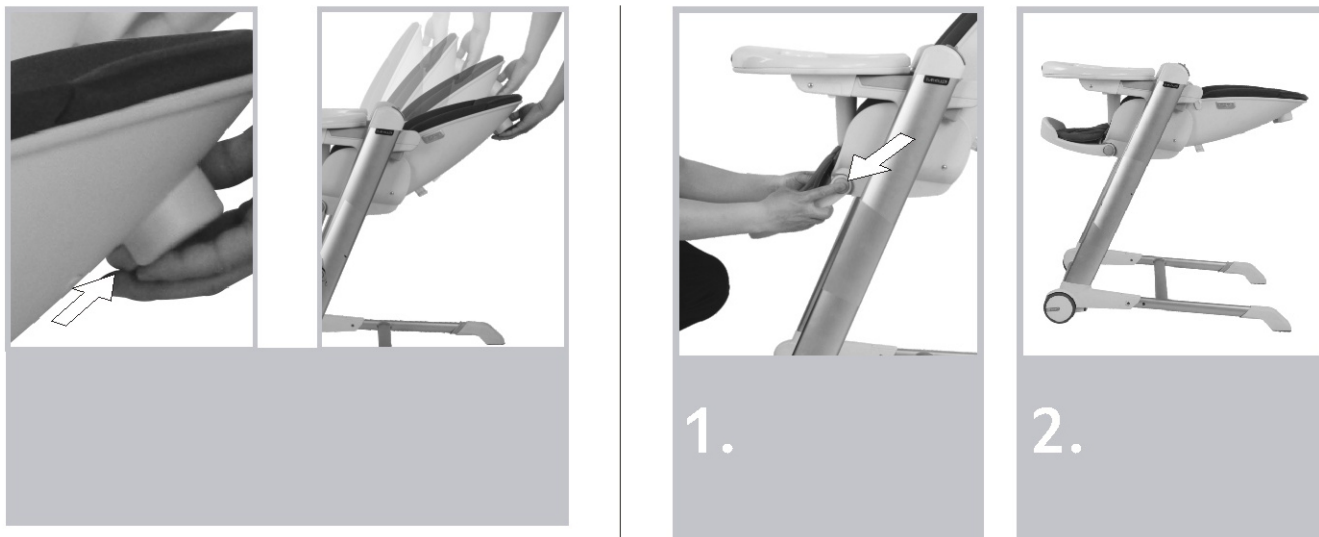
Folding the seat:



1. Press the seat height adjuster located on both sides and adjust the seat to the lowest position.
2. Push the front tube folding button as shown in Pic 2.
3. With the left hand on the folding button, use your right hand on the rear tube and pull the folding lock. (see pic 3.)
4. Pull the rear tube upwards.
5. The folded seat should look like pic 5. You can also remove the tray if you need to.

How to use

Backrest and footrest adjustment.



To adjust the backrest click on the button on the back of the seat and move the seat to the desired position. The backrest has 4 positions. To adjust the footrest press the buttons on each side of the footrest and move to the desired position (pic 1)
The Backrest can be adjusted to the flat position as shown in Pic. 2.

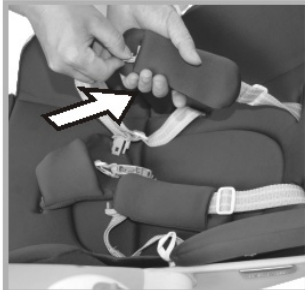
Tray usage



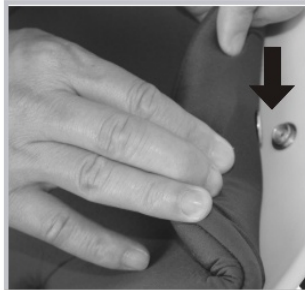
To remove the tray press the buttons underneath the tray (pic 1.) and remove the tray from the holders (pic 2.)
The Tray has 3 positions - When the green appears from the side of the tray that means it is in the lock position. The top layer of the tray is removable. You can remove the bottom of the tray crotch holder by using a screwdriver.

How to use

Removing the seat insert.



1.



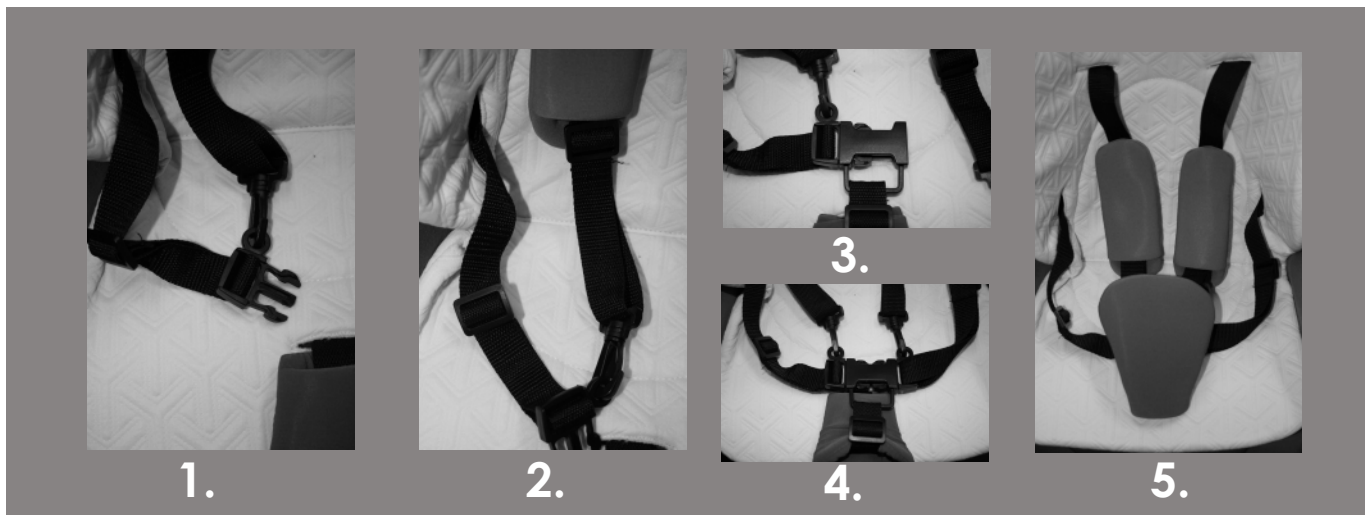
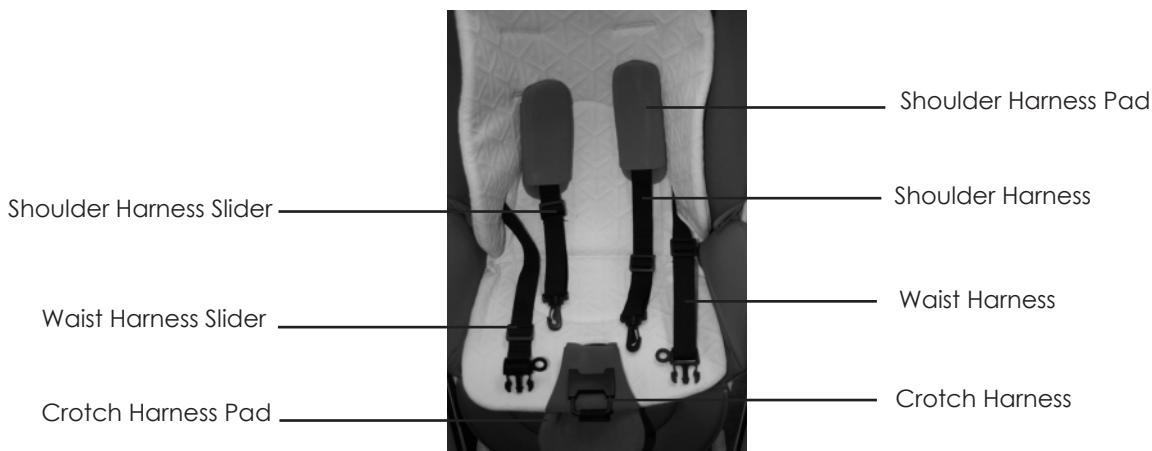
2.



3.

1. Unlock the safety harness and remove the shoulder pad.
2. Disengage all press stud buttons from behind the seat insert.
3. Untie the elastic band from behind the seat and then lift the insert out.
4. To Insert the seat insert just follow the steps above in reverse.

How to use Harness Assembly.



Familiarise yourself with all components of the 5 point harness. Place the child into the highchair and place the shoulder straps over the child's shoulders. Adjust the sliders until they are tight enough to keep the child in the seat. Repeat for both shoulder straps.

For newborns or smaller children you should use the lower height position on the seat unit. You can change the position of the height of the harness by threading the harness through the seat. As the child gets taller you should use the top position.

1. Carefully place your child into the seat and bring the waist straps around the child's waist and the shoulder harness over the child's shoulders. Attach each of the shoulder straps to the waist strap buckle with each end. The shoulder harness should connect to the circle on the end of the waist strap buckle. Repeat this for both sides. The straps should click onto each other.
2. Adjust the sliders from the waist harness and shoulder harness until they are tight enough to keep the child in the seat. Repeat this for both sides.
3. Once each shoulder harness is attached on the waist harness, insert the connected straps into the crotch harness.
4. Repeat on both sides.
5. Cover the buckles and sliders with the shoulder harness pads and crotch harness pad for comfort.

You can then adjust the straps further if required by using the sliders.

To release the harness, squeeze the centre of the crotch strap buckle to release one side of the shoulder and waist harness, then you should squeeze the other side to release the other side.

Warranty Against Defects

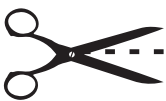
ALL VULU PRODUCTS ARE GUARANTEED FOR TWELVE MONTHS FROM THE DATE OF PURCHASE.

OUR GOODS COME WITH GUARANTEES THAT CANNOT BE EXCLUDED UNDER THE AUSTRALIAN CONSUMER LAW. YOU ARE ENTITLED TO A REPLACEMENT OR REFUND FOR A MAJOR FAILURE AND FOR COMPENSATION FOR ANY OTHER REASONABLY FORSEEABLE LOSS OR DAMAGE. YOU ARE ALSO ENTITLED TO HAVE THE GOODS REPAIRED OR REPLACED IF THE GOODS FAIL TO BE OF ACCEPTABLE QUALITY AND THE FAILURE DOES NOT AMOUNT TO A MAJOR FAILURE.

THIS COVERS AGAINST FAULTS WHICH DEVELOP THROUGH FAULTY MATERIALS AND WORKMANSHIP. MISUSE, ACCIDENTAL DAMAGES, NORMAL WEAR AND TEAR OR NEGLECT ARE NOT COVERED.

IF A FAULT BECOMES APPARENT, PLEASE RETURN THE ITEM TO THE STORE OF PURCHASE WITH YOUR RECEIPT. YOU MUST INFORM THE STORE WHAT THE DEFECT IS. WE WILL THEN ARRANGE FOR ITS REPAIR OR IT WILL BE ASSESSED FOR REPLACEMENT AS EXPEDIENTLY AS POSSIBLE. THE BENEFITS OF THIS WARRANTY ARE IN ADDITION TO OTHER RIGHTS AND REMEDIES UNDER THE LAW IN RELATION TO THE GOODS AND SERVICES TO WHICH THIS WARRANTY RELATES.

IF YOU ARE UNABLE TO RETURN THE ITEM TO THE STORE OF PURCHASE, YOU CAN CONTACT LOVE N CARE ON FREECALL 1300732599. WE WILL THEN ORGANISE FOR EITHER SOMEBODY TO INSPECT THE ITEM OR ARRANGE FOR A COURIER TO PICK IT UP AND RETURN IT BACK TO YOU.



BP 893

12 MONTH WARRANTY

Please fill in this section to validate your warranty and send to: **297 Canterbury Rd Revesby NSW 2212**

Name: _____ Store Purchased: _____

Address: _____ Date Purchased: _____

Product Name/No. _____

Contact Us

Head Office:

Love N Care Pty Ltd.
297-299 Canterbury Rd, Revesby

NSW 2212 Australia

Contact No: 02 9774 4655

Fax: 02 9774 4633

Email: info@lovencare.com.au

Website: www.lovencare.com.au



BROUGHT TO YOU BY

loveⁿcare

lovencare.com.au

Let's be friends!

 <http://www.facebook.com/lovencare1>

 http://twitter.com/love_ncare



100 % AUSTRALIAN OWNED SINCE 1984