

love^hcare™



RUSH»

Instruction Manual BP 9771



Safety guidelines and instructions must always be followed before making use of this product, please retain these instructions for future reference.

This product complies with product standard AS/NZS 2088:2000 & EN 1888

WARNING

- Do not carry extra children or bags on this stroller.
- Never leave your child unattended in the stroller.
- The stroller should not be used on stairs or escalators.
- Follow the manufacturers' instructions.
- To avoid serious injury always use the harness provided to secure the child.
- Put on all the brakes whenever you park the stroller.
- Care should be taken whilst folding and unfolding stroller to prevent fingers being trapped.
- Ensure your child's fingers, hands and all other body parts are clear from any moving part when adjusting the seat or handle on your stroller.
- Basket maximum weight should not exceed 7kg.
- Do not leave children unattended.
- Make sure children are clear of any moving parts if you adjust the stroller, otherwise they may be injured.
- This stroller should not be used near an open fire or an exposed flame.
- Do not use accessories other than those supplied or approved by Love N Care

THE MAXIMUM WEIGHT FOR THE STROLLER IS 40KG.

THE MAXIMUM WEIGHT FOR THE TODDLER SEAT IN REAR POSITION IS 15KG.

THE MAXIMUM WEIGHT IN MAIN SEAT OF THE STROLLER IS 25KG

CARE AND MAINTENANCE

All love n Care products have one year warranty from the date of purchase.

It is recommended to regularly inspect and main movement of locking devices; and security of essential components.

To maintain the stroller follow the steps mentioned below:

- If wheels become stiff, spray with dry silicon lubricant
- The frame can be washed with soap and warm water, do not use bleach.
- The seat can be wiped down with a clean cloth using soapy warm water.
- The padded stroller liner should be hand washed and hung to dry but not directly under sunlight.

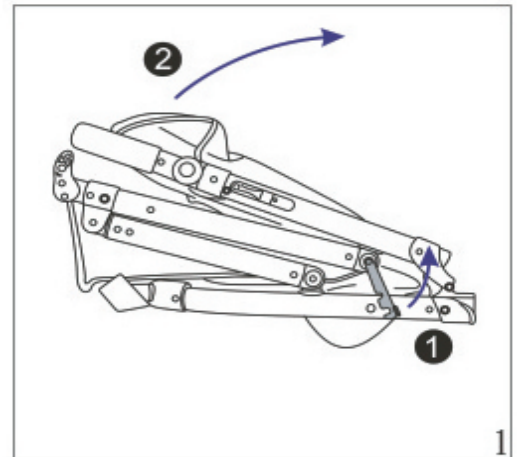
INFLATE TYRES TO MAX 28PSI using a hand pump

**MANUFACTURED FOR AND IMPORTED BY:
LOVE N CARE PTY LTD, 297-299 CANTERBURY RD
REVESBY NSW 2212**

Assembly Instructions

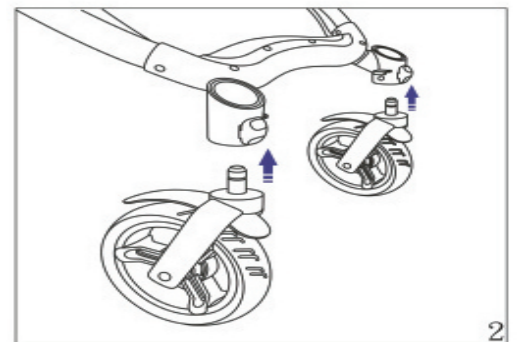
Step 1: Open the Frame

Take the stroller out of the box and remove all the items. Unclip the safety locking clip on the side of the chassis (point 1) Place the frame on the floor, and pull the handle upwards (point 2) the frame should spring open and lock into place.



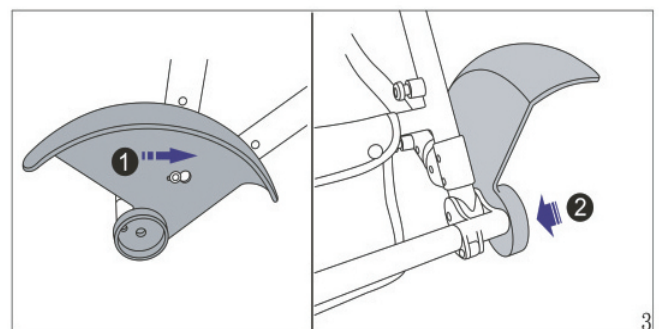
Step 2: Attach front wheels

Attach the front wheels as shown. ENSURE the swivel lock is on the Outside.



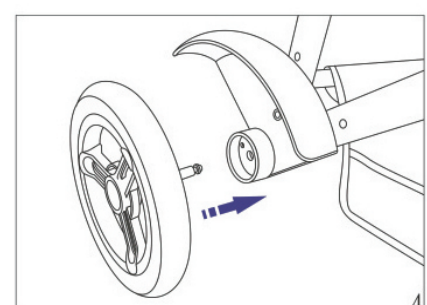
Step 3: Insert Mudguard

Place the mudguard into the rear housing for the wheel and move it into the available channels. PULL on the mudguard to ensure that it is fully attached



Step 4: Attach rear wheels

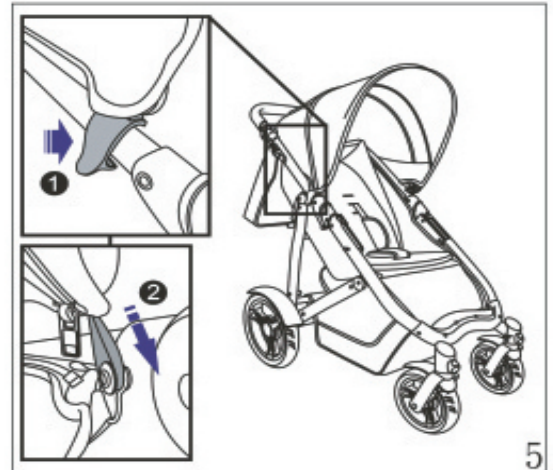
Attach the rear wheel as shown. ENSURE that the wheel is locked in before placing the child on the Stroller.



Step 5: Attaching the hood

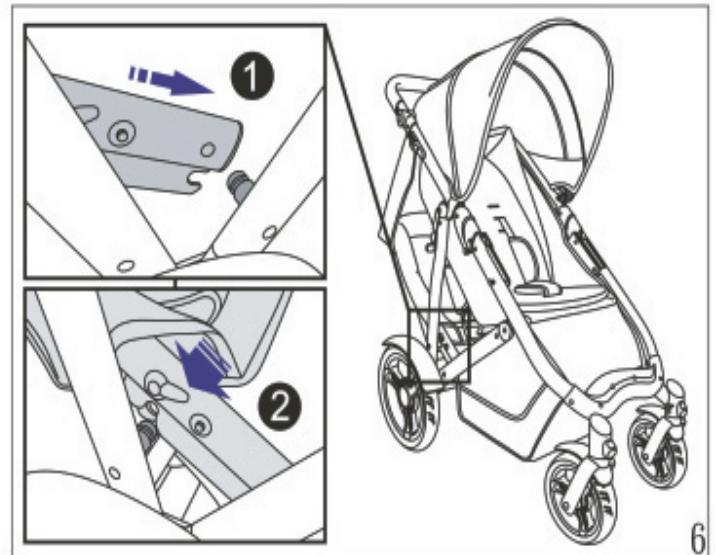
Clip the hood on the side of the frame as shown (point 1)

Ensure that it is locked into place



Step 6: Attaching the rear toddler seat (optional)

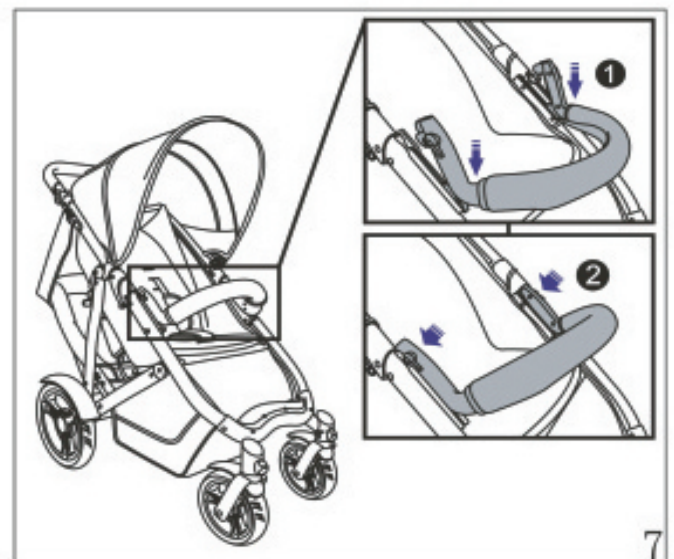
Take the toddler seat and place the open end into the 1st holder (point 1) then you should push the seat down so the rear wrench snaps into the second holder (point 2). ENSURE this is done on both sides and make sure it is secure before placing a toddler on it.



Step 7: To attach the front Bar

To attach the front bar make sure the toddler seat is not attached. Place the lower hook into the holder first (point1) and then press the upper hook to snap it into the frame (point 2). Pull it a little to ensure it is in place.

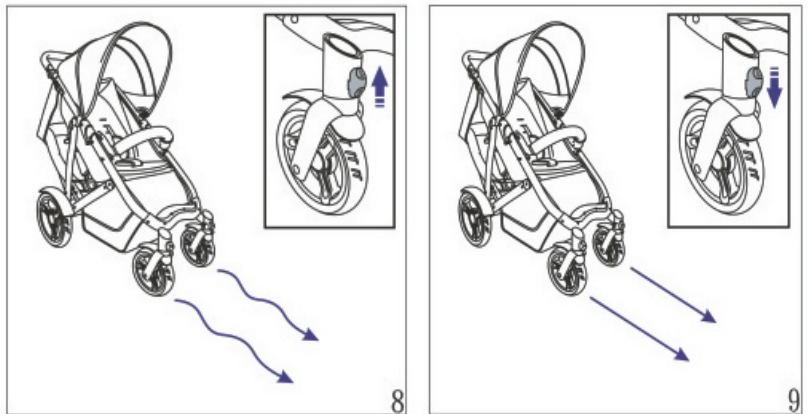
To remove pull down the latch and push the bar down then lift out of the holder



Step 8: Using the front wheels in swivel Mode.

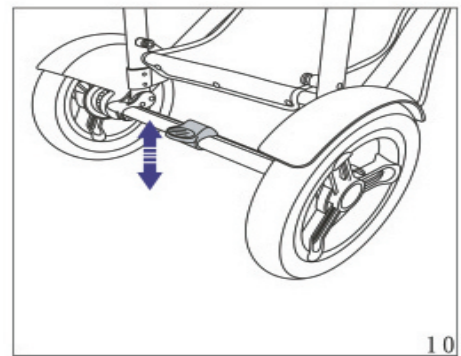
To Unlock the front wheels and use them in swivel mode push the button up as illustrated in fig 8.

To lock the wheels so it can only go in one direction Push the button on the front of the frame down as shown in fig 9.



Step 9: Using the Rear Parking Brakes

To use the parking brakes step down on the rear paddle to stop the stroller moving whilst in a stationary position. Check that the brakes have been applied correctly by gently pushing the stroller. To release the brakes just push the paddle up.

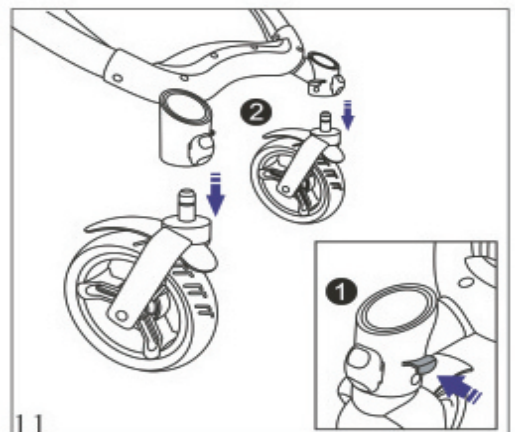


PUT ON ALL THE BRAKES WHENEVER YOU PARK THE STROLLER

Step 10: Remove the front wheels

To remove the front wheels push the trigger (point 1).

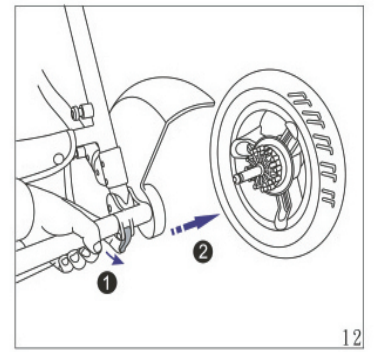
The wheel should then be released.



Step 11: To remove the rear wheels.

Pull the release trigger as shown in Point 1.

The wheel will then be released.



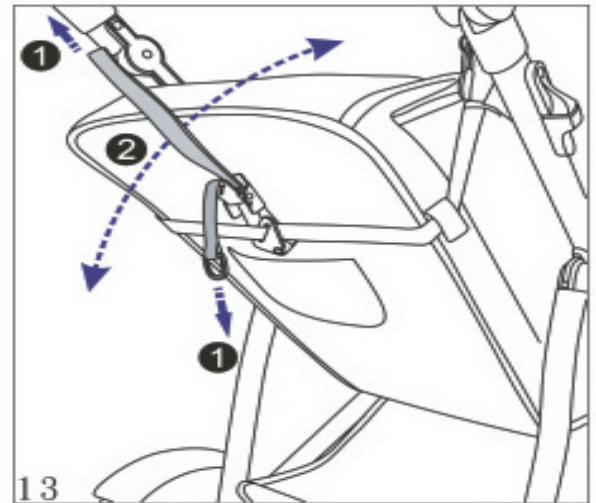
Step 12: Adjusting the Backrest Position

To have the stroller in the fully reclined pull down on the release strap as shown at point 1. To adjust the seating position pull up on the strap shown.

With the excess strap place in the rear pocket. (to avoid and tangles)

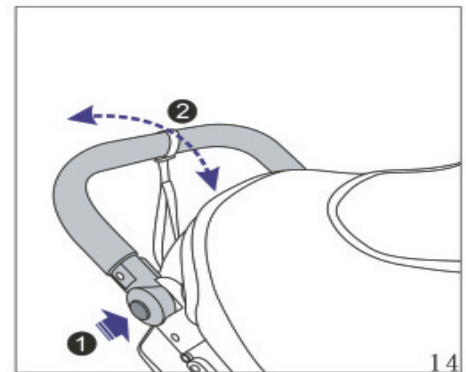
If toddler seat is used in the rear it is advisable to have the main seat in an upright position.

If Toddler seat is used in the front it is advisable to have the main seat in the recline position



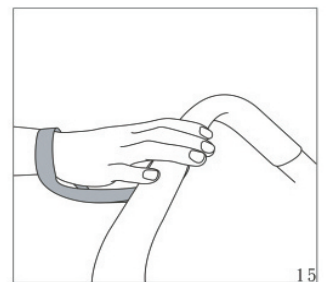
Step 13: Adjusting the handle

To adjust the position of the handle you must press the button (point 1) on both sides of the stroller and either push up or down on the handle depending on the desired position required.



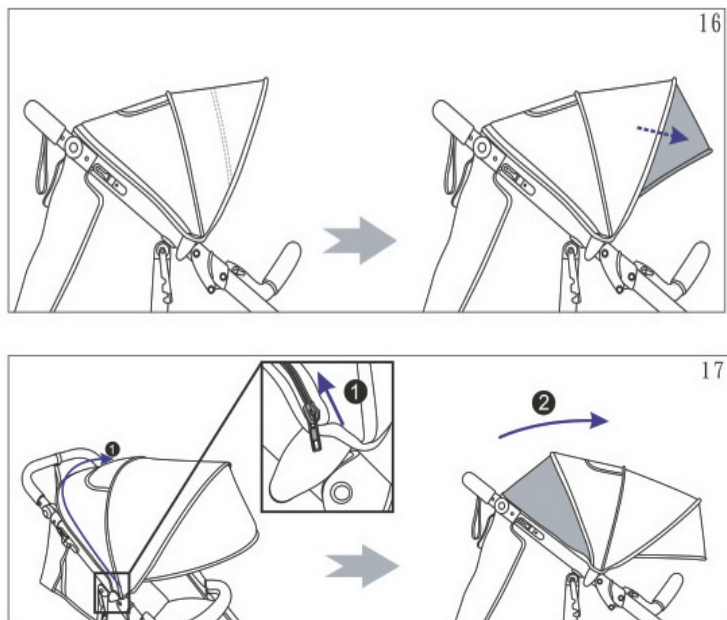
Step 14: Attaching the Tether Strap.

Please ensure you attach the tether strap to the handle of the stroller by using a loop to better control the stroller and so it does not get out of reach.



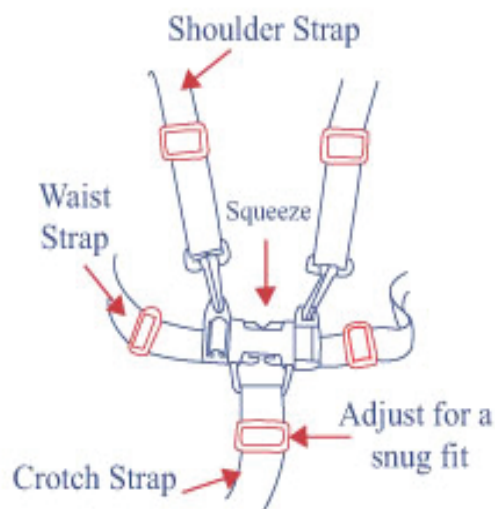
Step 15. Using the hood.

The hood can be made higher or lower depending on your suitability. Simply unclip the hood bracket from its position and replace in either the upper or lower position as required (Fig 17)



Step 16: How to use the 5 Point Harness

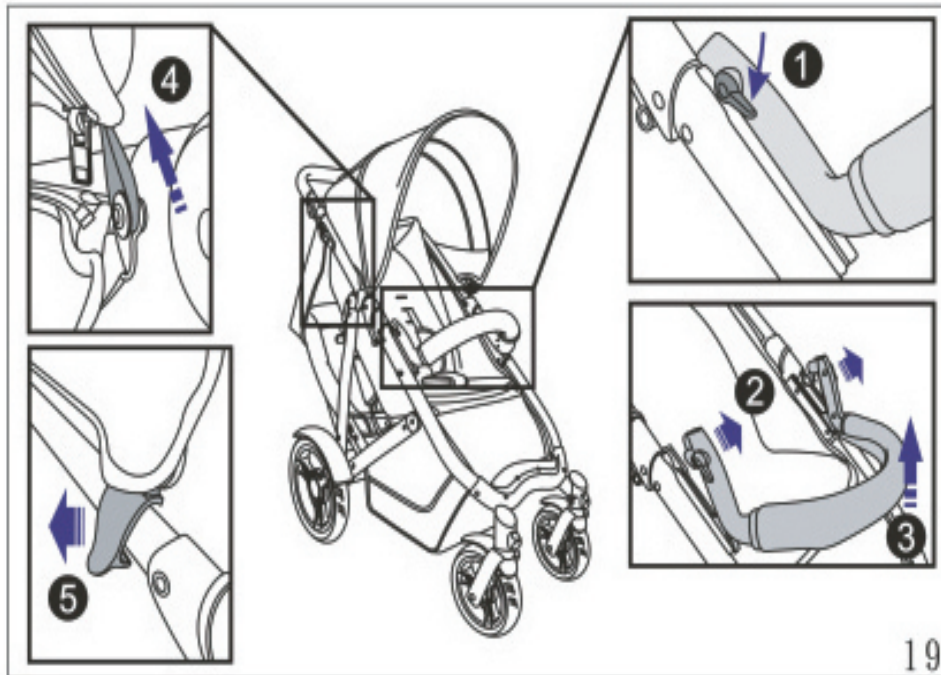
Carefully place the child in the seat and bring the safety harness around the child's waist and over the shoulders. Place the crotch strap between the child's legs. Insert the male end of each shoulder strap/waist belt into the buckle on the crotch strap. Tighten the harness to be snug around the child's waist and over the child's shoulders. To release, squeeze the sides of the buckles (located in the centre). Your child should be securely harnessed at all times and should never be left unattended.



⚠ WARNING

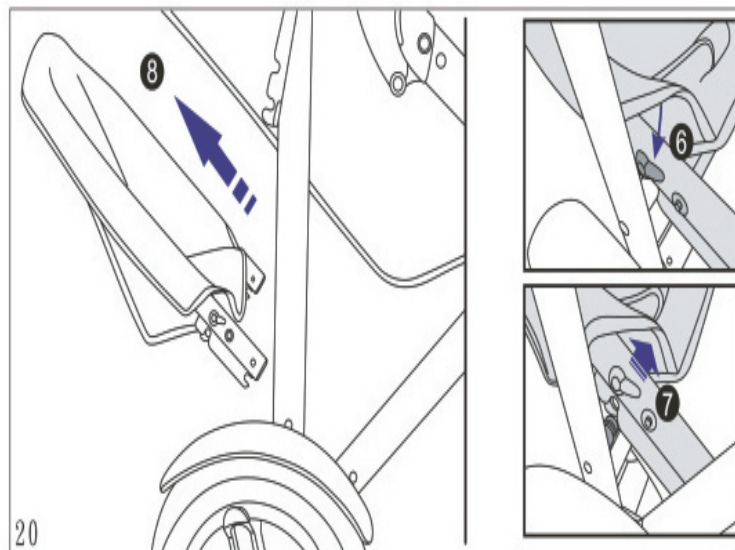
USE THIS HARNESS AT ALL TIMES

Step 16: Releasing Parts (A visual View)



Step 17: Releasing rear toddler Seat

To remove the rear toddler seat pull down on the lever switch as shown on point 6 (on both sides) pull the toddler seat up as shown in point 6 then lift as shown in point 8.

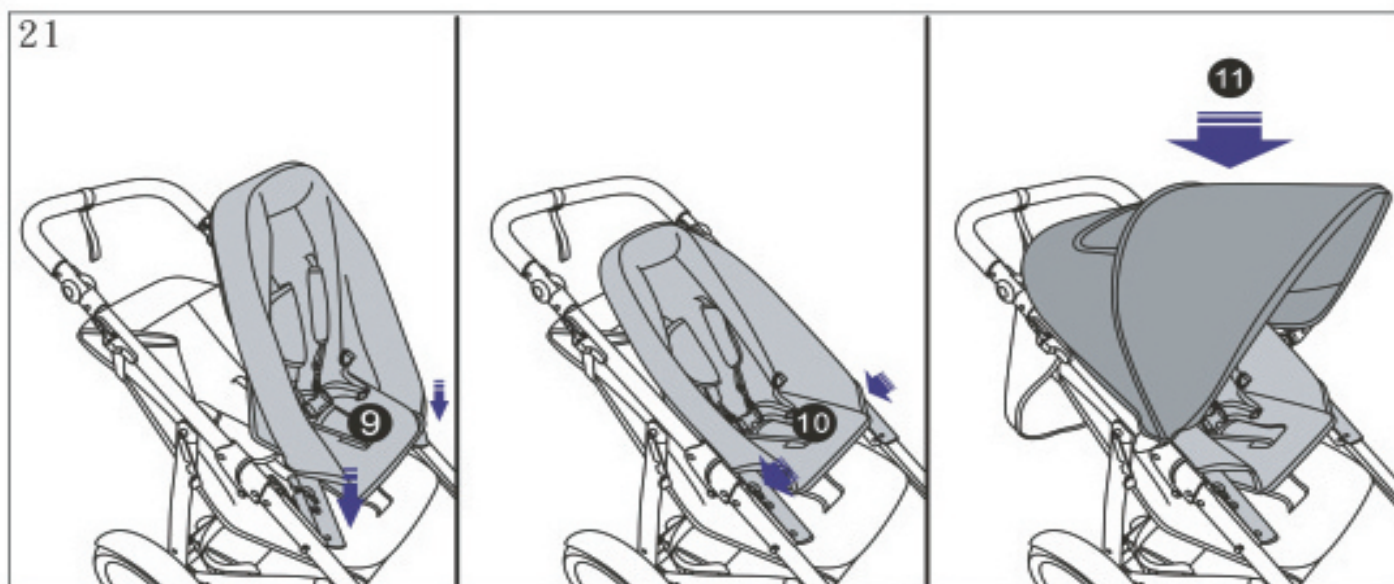


Step 18: Attaching/removing the front toddler seat

Make sure the front bar is removed first aswell as the hood.

Take the toddler seat and place the open end into the 1st holder (point 9) then you should push the toddler seat down so the rear wrench snaps into the second holder (pont 10). ENSURE this is done on both sides and make sure it is secure before placing a toddler on it. Then you should attach the hood (Repeat step 5).

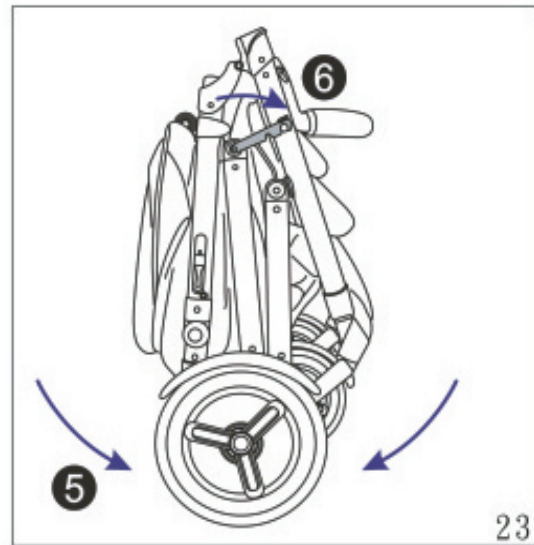
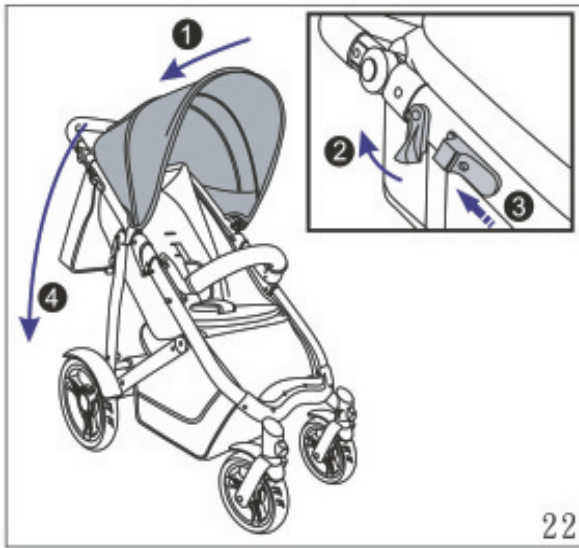
To **remove** the seat push the side levers down and pull the seat towards you. You can also release one side lever then pull the seat forward then release the otherside. The toddler seat should then be removed. Both methods work.



Step 19: Folding the stroller

Remove all toddler seats if attached.

In order to close the stroller close the hood as shown at point 1, pull the trigger up as shown at point 2 then pull the button point 3 on both sides of the frame at the same time, then push the handle down as shown at point 4. This will fold the stroller compactly. To lock the frame securely use the locking clip shown on point 6.





Contact Us:

Love N Care Pty Ltd.

297-299 Canterbury Rd, Revesby

NSW 2212 Australia

Contact No: 02 9774 4655

Fax: 02 9774 4633

Email: info@lovencare.com.au

Website: www.lovencare.com.au