

love^hcare™

Newborn - 11kg

BP 6621

PORTABLE SWING



Instruction Manual

Please keep these instructions for future reference

love^hcare™

Congratulations on purchasing your new swing.

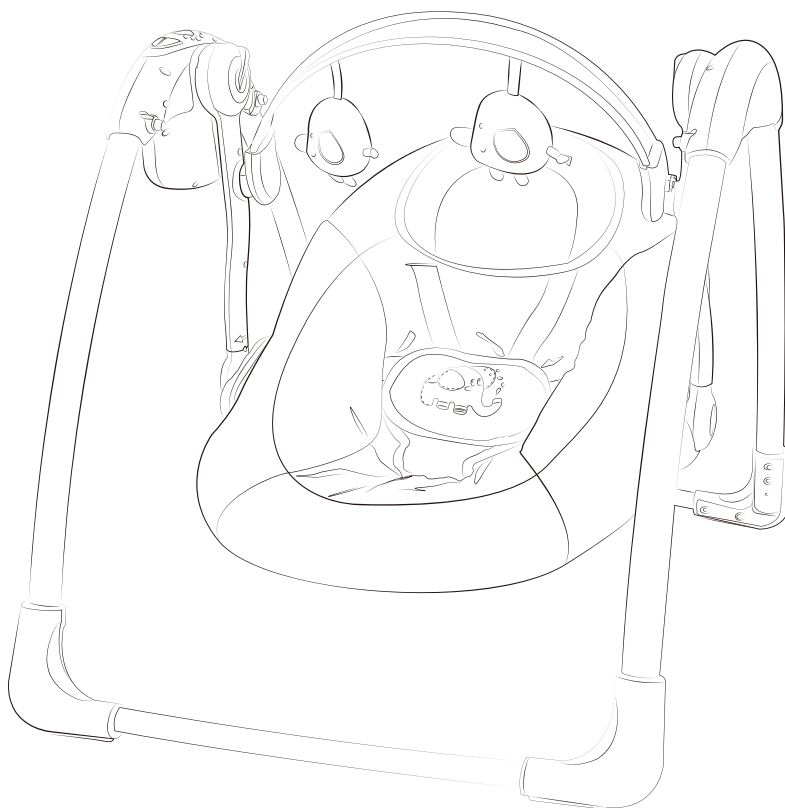
In almost no time you should be able to have this one of a kind swing ready to meet your beautiful child :)

Please take a few moments to read this instruction manual on how to assemble and use your swing correctly so you can rest assured that your little one is swinging safe and Secure.

This swing has 5 swing speeds and 3 timer choices

There are 7 different melodies.

The swing has a Five-point harness, sturdy construction AND padded head support
Provide the safety AND COMFORT WE ALL WANT!





RETAIN FOR FUTURE REFERENCE.

READ CAREFULLY BEFORE ASSEMBLING AND USING THE PRODUCT

- NEVER leave the child unattended. Always keep your child in view.
- Do NOT use the product once your child can sit unaided or weighs more than 11kg (approximately 0-9 months).
- It is dangerous to use this product on an elevated surface e.g. a table.
- Always use the restraint system.
- This product is not intended for prolonged periods of sleeping.
- DO NOT let children play with this product.
- DO NOT move or lift this product with the baby inside it.
- To avoid injury make sure that children are kept away when unfolding and folding this product.

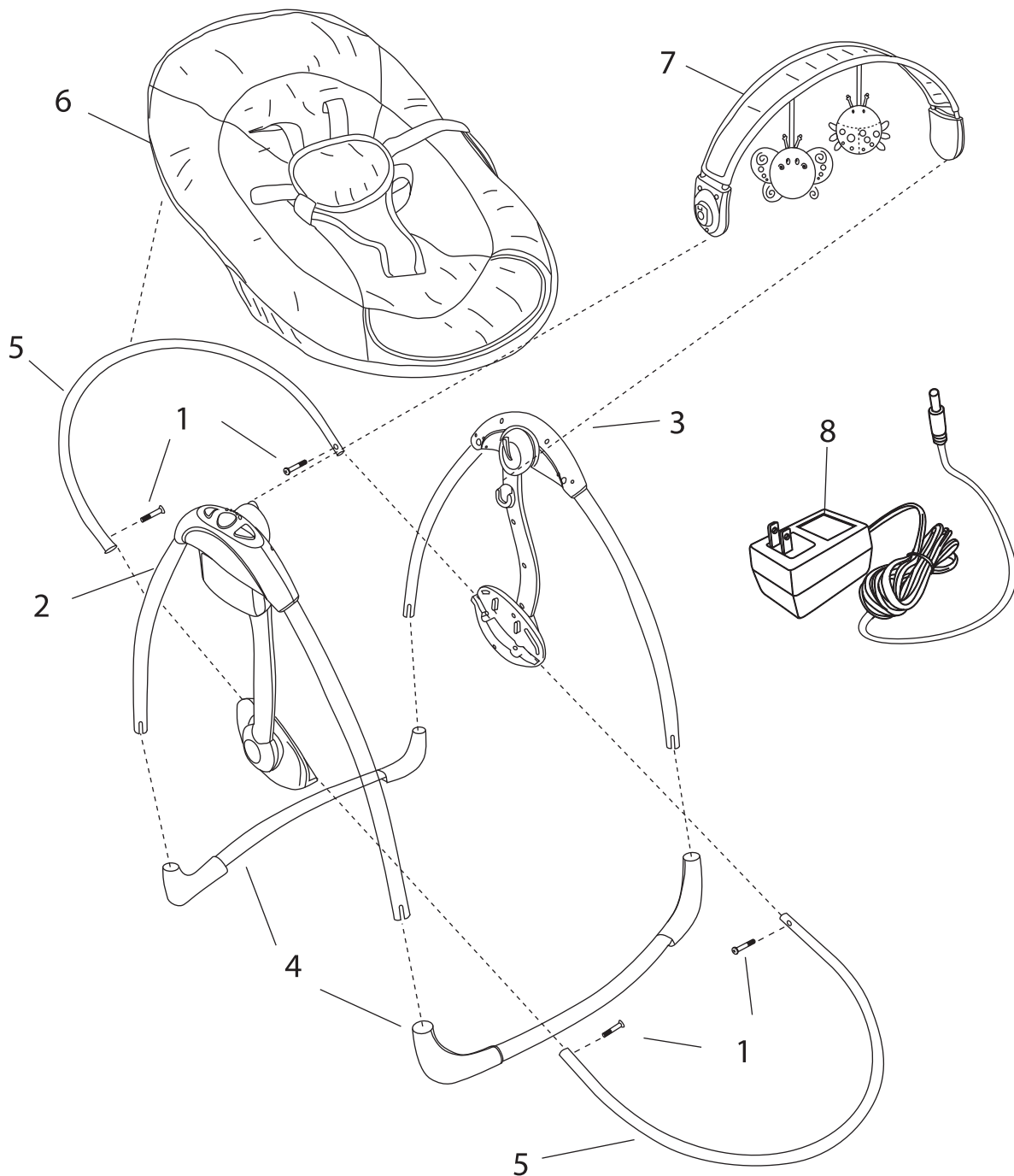
• This product does not replace a cot or a bed, when your child needs to sleep, it should be placed in a suitable cot or bed.

Use only in the reclined position once the child is at least 4 months old and can hold its own head unassisted. Young infants have limited head and neck control. If the swing is too upright the infants head can drop forward, compress the airway and result in DEATH.

- Be aware of the risk of open fire and other sources of strong heat such as electric bar fires, gas fires, etc in the vicinity of the product.
- To avoid strangulation, DO NOT place items with a string around your child's neck, suspend strings from this product, or attach strings to toys.
- All assembly fittings should be unfolded completely and tightened properly before using the product.
- DO NOT use the product if any parts are broken, torn or missing.
- DO NOT use accessories or replacement parts other than those approved by the manufacturer. Contact Love N Care for replacement parts.
- Non-rechargeable batteries are not to be recharged.
- Rechargeable batteries are to be removed from the product before being charged.
- Rechargeable batteries are only to be charged under adult supervision.
- Different types of batteries or new and used batteries are not to be mixed.
- Batteries are to be inserted with the correct polarity.
- Exhausted batteries are to be removed from the product.
- The supply terminals are not to be short-circuited.
- Change batteries when product ceases to operate satisfactorily.
- Keep the batteries out of children's reach.
- To prevent possible injury by entanglement, remove the toys when the child starts trying to get up on its hands and knees in a crawling position.
- To avoid suffocation, remove plastic bag and packaging materials before using this product. The plastic bag and packaging materials should then be kept away from babies and children.
- Power Adapters used with the product are to be regularly examined for damage to the cord, plug, enclosure and other parts, and in the event of such damage, they must not be used.

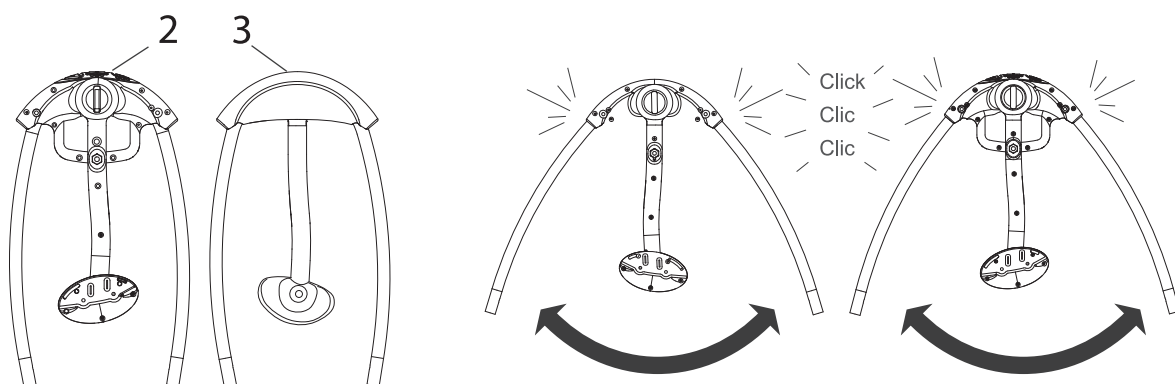
Parts List and Drawing

| No. | QTY | Description |
|-----|-----|---|
| 1 | (4) | M5 Phillips Screw |
| 2 | (1) | Left Frame/Pivot Assembly with swing control module |
| 3 | (1) | Right Frame/Pivot Assembly |
| 4 | (1) | Base Frame Tube |
| 5 | (1) | Seat Tube |
| 6 | (1) | Seat Pad |
| 7 | (1) | Toy Bar with Plush Toys |
| 8 | (1) | AC Adapter |

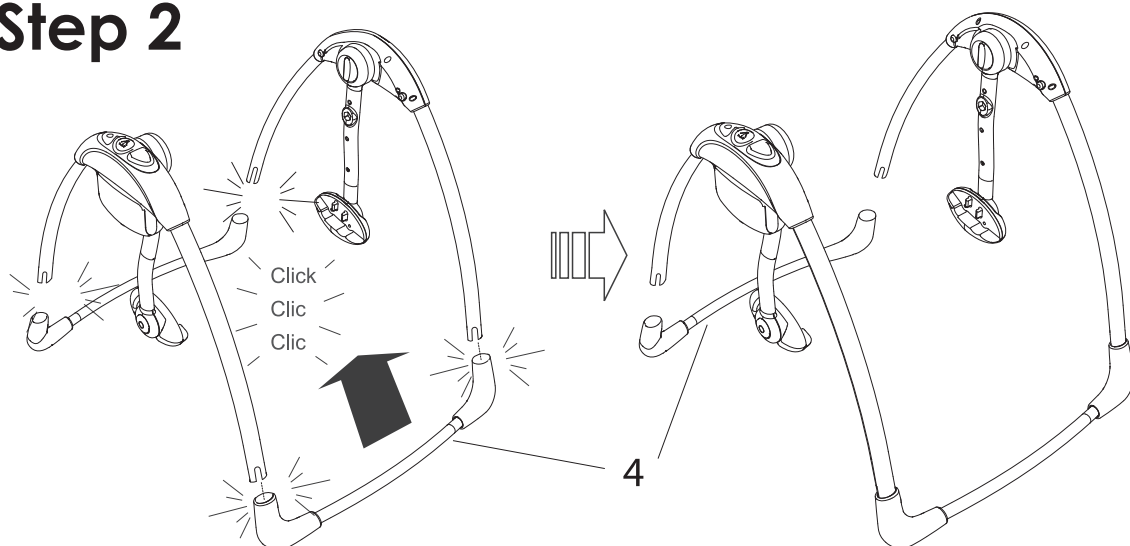


Assembly Instructions

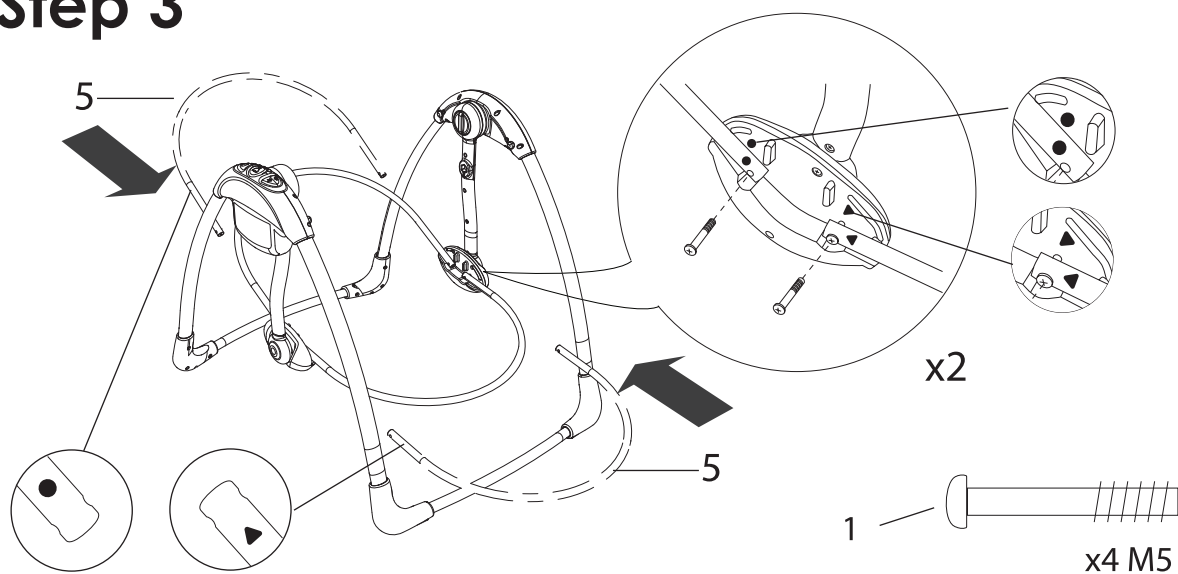
Step 1



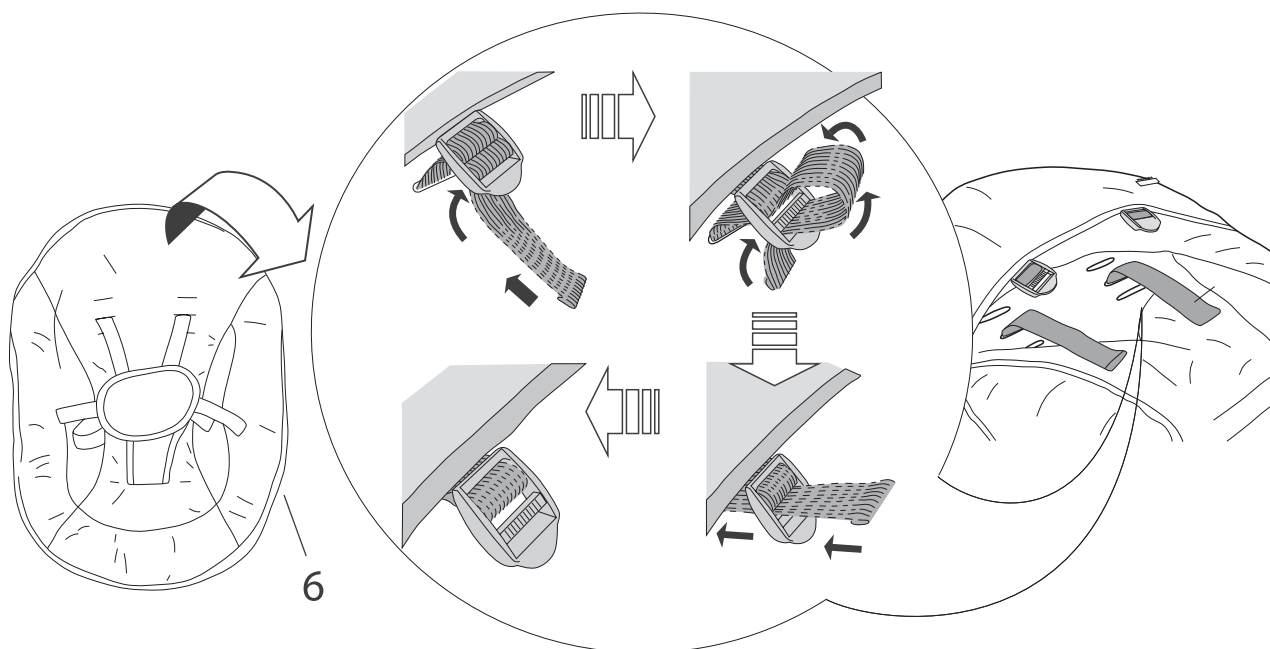
Step 2



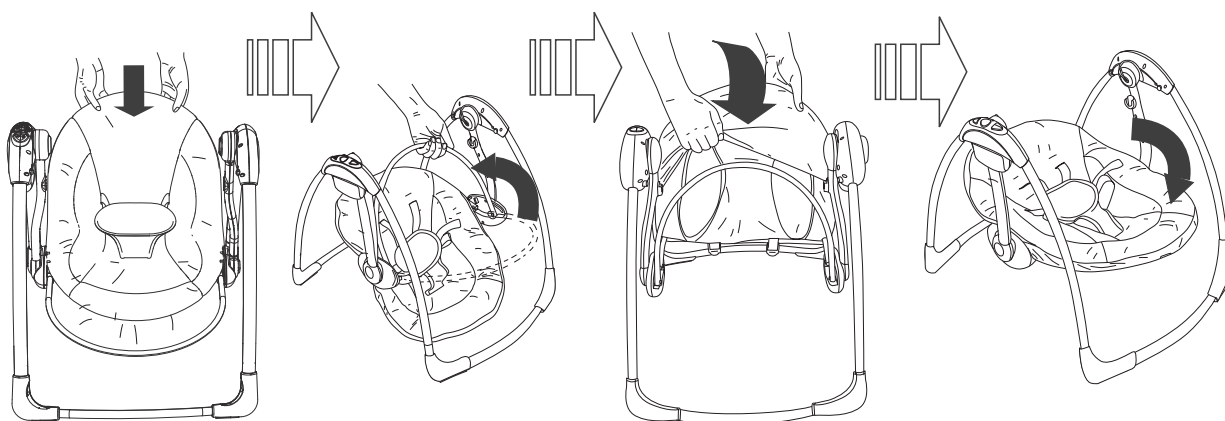
Step 3



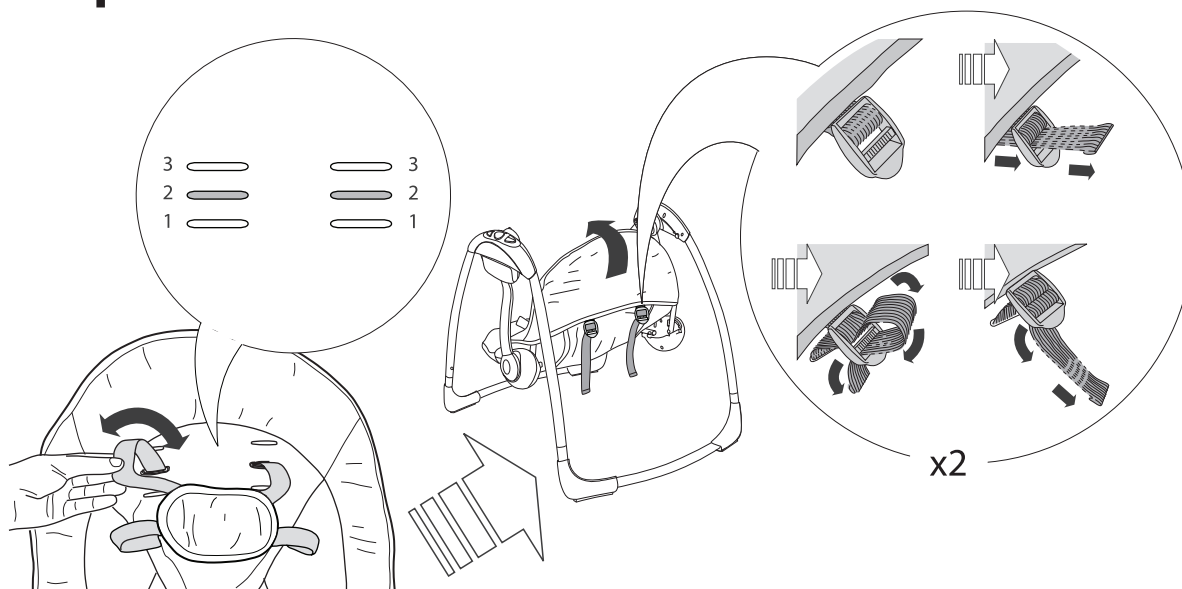
Step 4



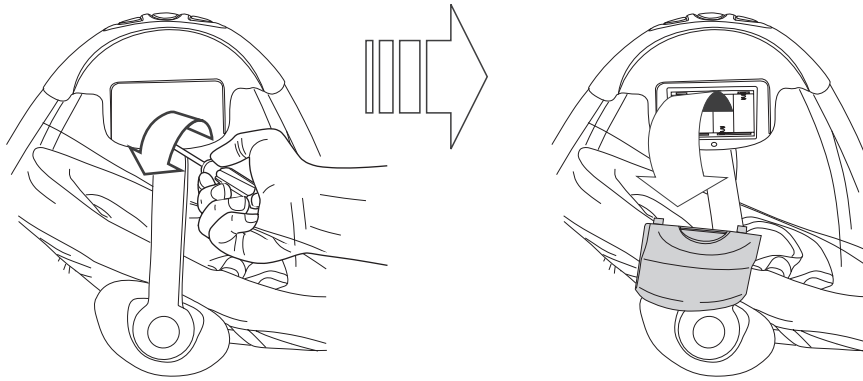
Step 5



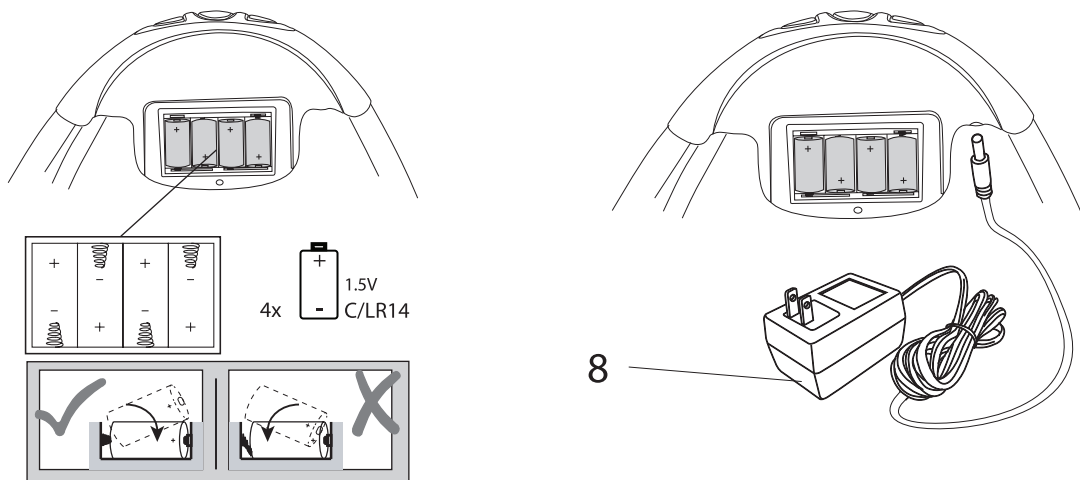
Step 6



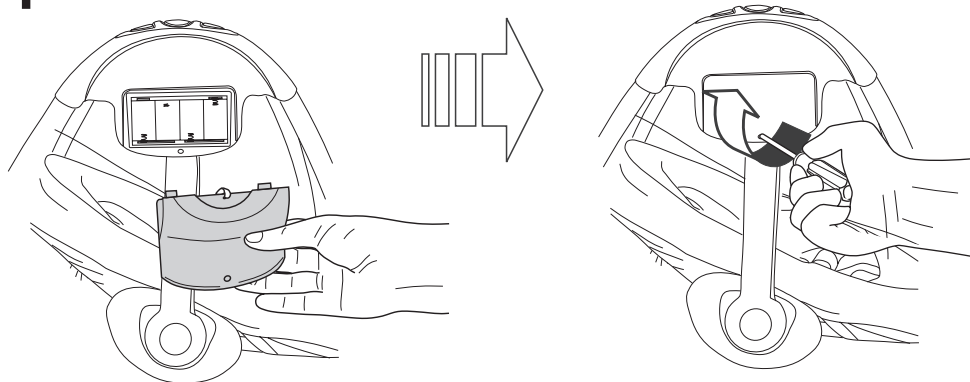
Step 7



Step 8



Step 9

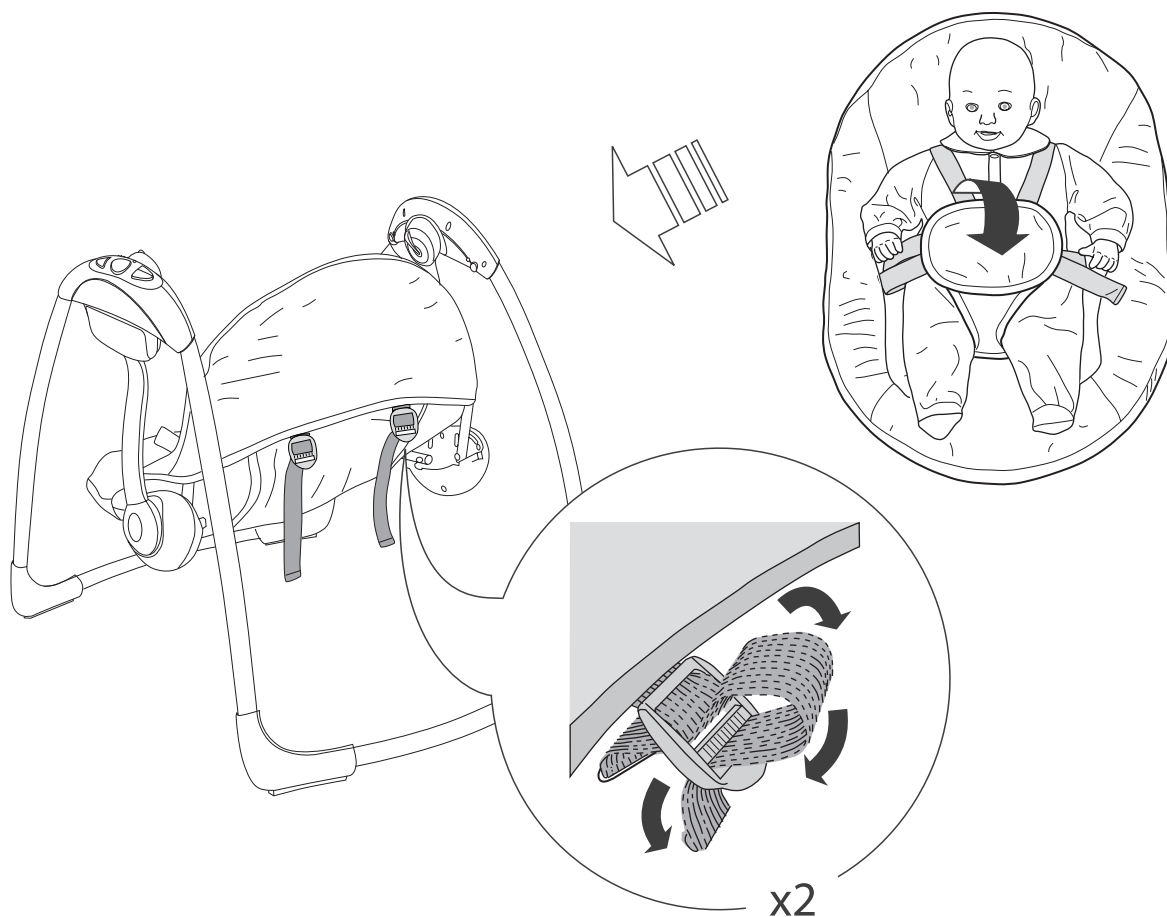
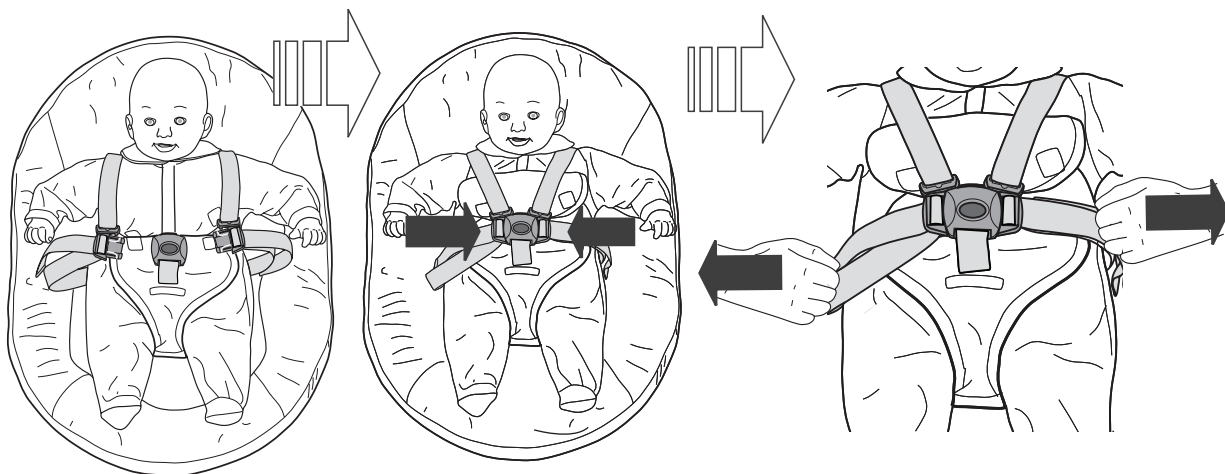
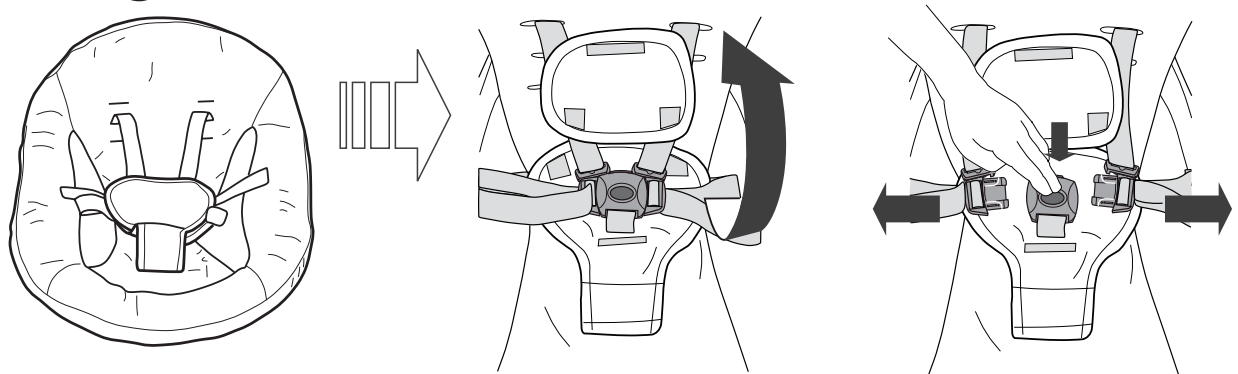


The swing control module requires (4) size C/LR14 (1.5V) alkaline batteries (not included) without AC Adapter. When using the AC adapter, only use the one supplied with this swing. Do not use extension cords.

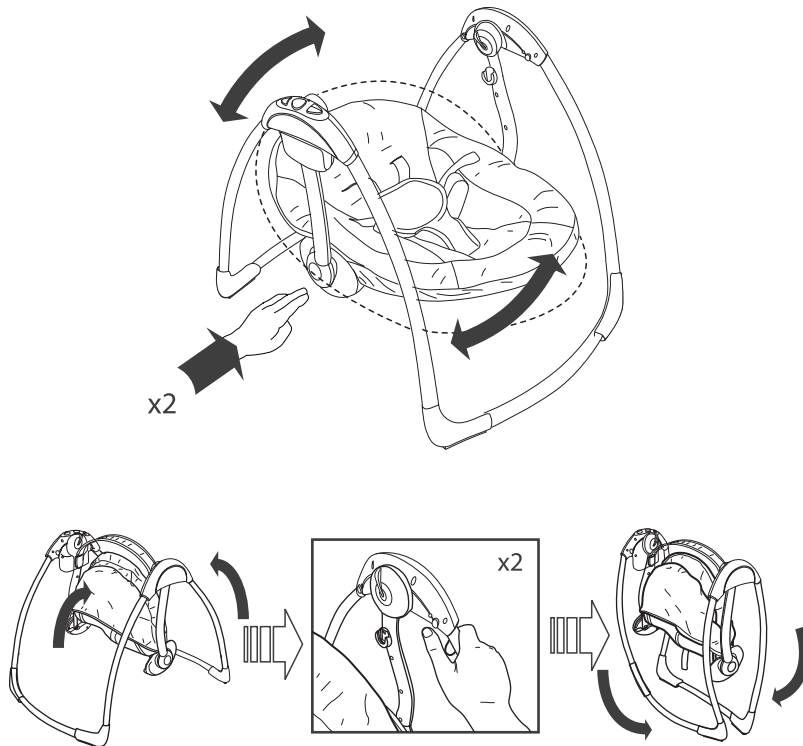
CAUTION: Follow the battery guidelines in this section.

Otherwise, battery life may be shortened or the batteries may leak or rupture. Always keep batteries away from children. Do not mix old and new batteries. Do not mix alkaline, standard, or rechargeable batteries. Only batteries of the same or equivalent type as recommended are to be used. Install the batteries so that the polarity of each one matches the markings in the battery compartment. Do not short-circuit the batteries. Do not store batteries in areas that have extreme temperatures (such as attics, garages, or au automobiles). Remove exhausted batteries from the battery compartment. Never attempt to recharge a battery unless it is specifically marked "rechargeable." Rechargeable batteries are to be removed from the toy before being charged. Rechargeable batteries are only to be charged under adult supervision. Do not use rechargeable alkaline batteries in a Ni-Cad or Ni-MH battery charger. Please use the correct disposal method for batteries. Weak batteries cause erratic product operation, including distorted sound, dimming or failed lights, and slow or non-working motorized parts. Because each electrical component requires a different operating voltage, replace the batteries when any function fails to operate.

Using the Seat restraint



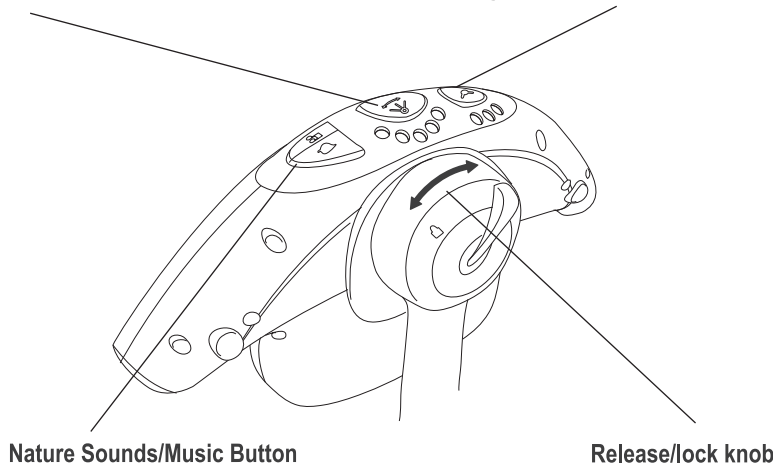
Using the Recline Function



Using the Swing Control Module

Speed Selector Button and Indicator

Swing Timer Select Button and Indicator



The TrueSpeed Control provides steady motion to calm your baby. To use the swing function... Turn the speed selector to start the swing and select the speed. The five Leds beside the button indicate the selected speed. If you do not select a timer setting, the unit uses a default time of 90 minutes for auto-shutoff. Or press timer setting button for 5 second to stop swing.
Noted: It is not necessary to push swing. The swing will automatically adjust motion to the desired speed within several seconds after speed selection.



To use the melody/nature sound function... Press the Melody/Nature Sound Button to start a melody/nature sound and select music/nature sound. Seven different melodies/four different nature! sound will be play. Press the timer button for 5 second to stop music. Otherwise, auto-shutoff occurs after 90 minutes.



Use the Swing Timer Select function to turn off the swing automatically. Press the button to sequence to the desired timer setting of 15, 30, or 45 minutes. The three Leds beside the button indicate the selected time period. If you do not select a timer setting (all LEDs are OFF), the unit uses a default time of 90 minutes for auto-shutoff.



Turn the knob to release or lock the seat as you need

Care and Maintenance

Seat Pad: Remove from frame. Fasten Buckles on seat restraint and seat pad. Fasten all hook-and-loop patches to the corresponding patch. Machine wash with cold water, gentle cycle. No Bleach. Tumble dry, low heat.

Toy bar and Toys: Wipe Clean with a damp cloth and mild soap. Air dry. Do not immerse in water.

Frame: wipe the metal frame with soft, clean cloth and mild soap.

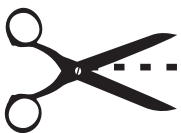
WARRANTY AGAINST DEFECTS

All Love N Care products are guaranteed for twelve months from the date of purchase. Our goods come with guarantees that cannot be excluded under the Australian Consumer Law.

You are entitled to a replacement or refund for a major failure and for compensation for any other reasonably foreseeable loss or damage. You are also entitled to have the goods repaired or replaced if the goods fail to be of acceptable quality and the failure does not amount to a major failure. This covers against faults which develop through faulty materials and workmanship.

Misuse, accidental damages, normal wear and tear or neglect are not covered. If a fault becomes apparent, please return the item to the store of purchase with your receipt. You must inform the store what the defect is. We will then arrange for its repair or it will be assessed for replacement as expediently as possible. The benefits of this warranty are in addition to other right and remedies under the law in relation to the goods or services to which this warranty relates. If you are unable to return the item to the store of purchase, you can contact Love N Care on free call 1300 732 599.

Where you send the product directly to the manufacturer then you may be liable for the costs of transportation to and from Love N Care. Love N Care will meet the reasonable expenses incurred by a consumer in making a warranty claim. You can claim expenses incurred in making a claim by contacting our customer service team on 1300 732 599 or by email at info@lovenccare.com.au



12 MONTH WARRANTY

BP 6621 PORTABLE SWING

Please fill in this section to validate your warranty and send to: **297 Canterbury Rd Revesby NSW 2212**

Name: _____ Store Purchased: _____

Address: _____ Date Purchased: _____

Product Name/No. _____

Contact Us

Head Office:

Love N Care Pty Ltd.
297-299 Canterbury Rd, Revesby

NSW 2212 Australia

Contact No: 02 9774 4655

Fax: 02 9774 4633

Email: info@lovencare.com.au

Website: www.lovencare.com.au

love^hncare™

www.lovencare.com.au

Let's be friends!



<http://www.facebook.com/lovencare1>



<https://www.instagram.com/lovencare/>



100 % AUSTRALIAN OWNED SINCE 1984