

# love<sup>h</sup>care™ | Noor Cot & Chest

n

## FEATURES:

- Cot and Chest - Easy to assemble and use
- Cot - 2 Level base
- Cot - Converts to a junior Bed with bed rails.
- Cot and Chest - Made from MDF
- Chest - Large rounded handles
- Chest - 3 drawers
- Chest - Removable Changer Top
- Cot and Chest - Two tone colour - Grey/White
- Cot and Chest - 1 Year Warranty



Cot



Chest



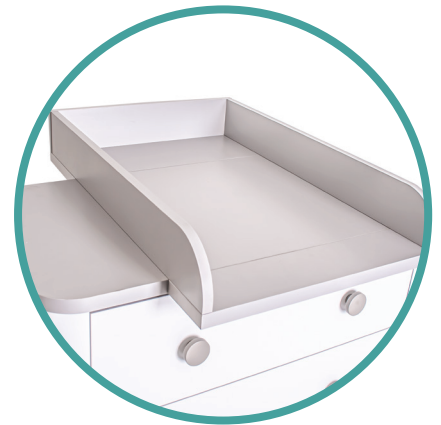
2 Levels Base



3 Drawers



Converts to Junior Bed



Changer Top

n

## PRODUCT SPECIFICATIONS:

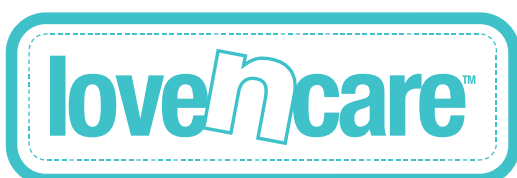
CODE	Description
CAP 100	Noor Cot - White
CAP 110	Noor Chest - White

n

## DIMENSIONS & WEIGHT:

- Cot - Size H84.5cm x L135.5cm x W75cm
- Chest - Size H85.5cm x D47cm x W92.5cm
- Weight Cot/Chest 32kg/45kg
- Recommended Cot Mattress: 130x69x13cm
- Recommended Chest Pad: 78x49cm

	Description	Code	Carton 1 (mm)	Carton 2 (mm)	Carton 3 (mm)
Noor Cot	Dimension (mm)	CAP 100	1340*770*80	805*770*190	
	Barcodes		9325049025113	9325049025120	
	Weights KG (GW/NW)		19/17	17/15	
Noor Chest	Dimension (mm)	CAP 110	290*800*130	730*1230*95	805*1400*70
	Barcodes		9325049025137	9325049025144	9325049025151
	Weights KG (GW/NW)		7/6	13/11	30/28



for the safety<sup>h</sup>comfort of your child

100 % AUSTRALIAN OWNED SINCE 1984



<http://www.facebook.com/lovencares1>



[http://twitter.com/love\\_ncare](http://twitter.com/love_ncare)



lovencares.au



info@lovencares.au



1300 732 599