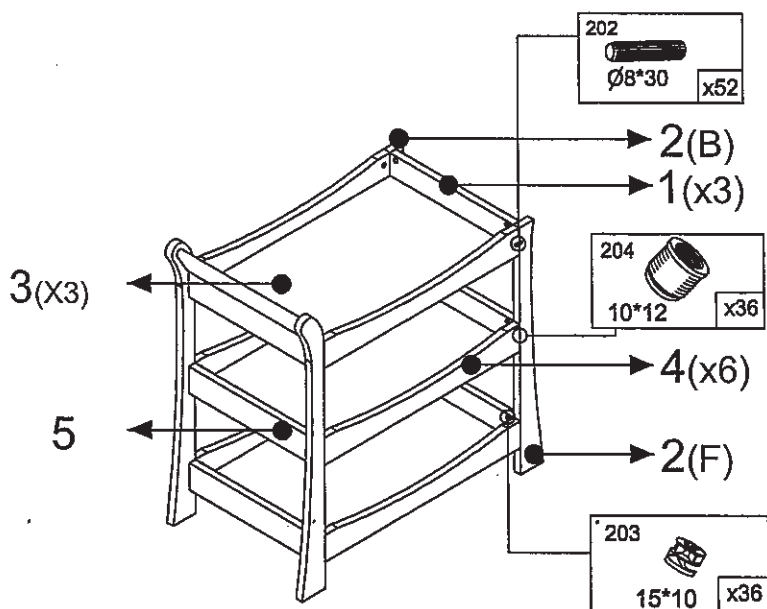


# NOBLE Changer

## Instructions

IMPORTANT. RETAIN FOR FUTURE REFERENCE.  
READ CAREFULLY

30 MIN



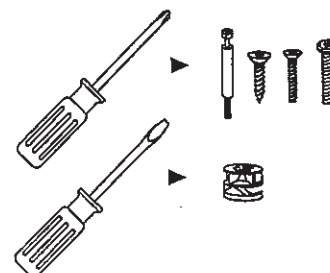
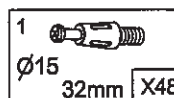
NOB5165: 1,2,4,5,6

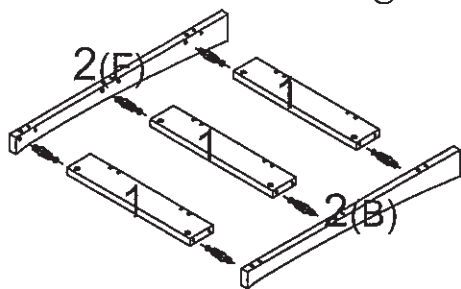
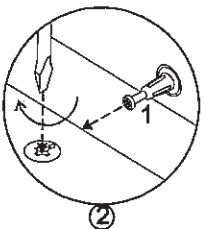
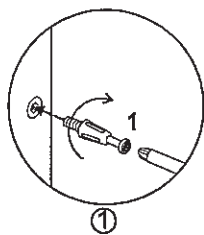
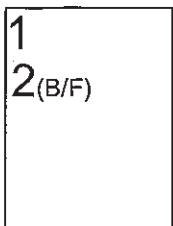
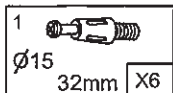
NOB5265: 3

lovenhcare

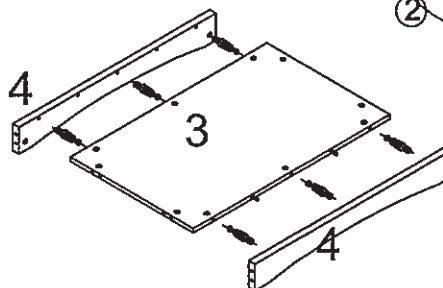
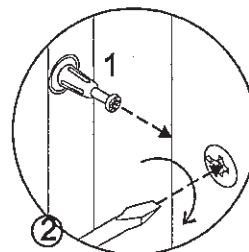
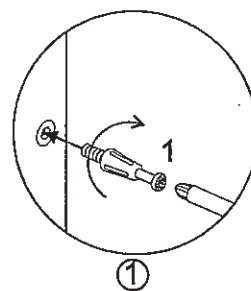
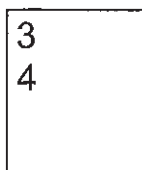
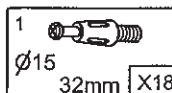
www.lovenhcare.com.au

6

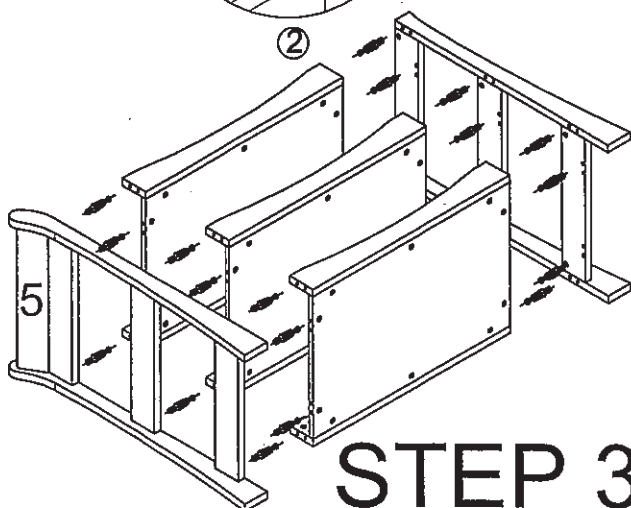
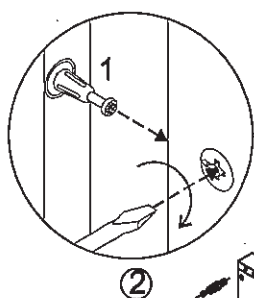
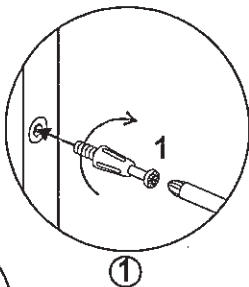
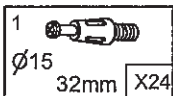




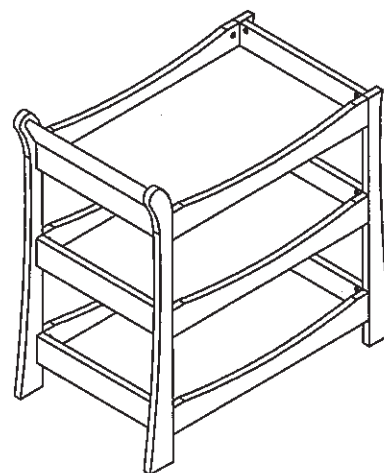
## STEP 1



## STEP 2



## STEP 3



## STEP 4

## **INSTRUCTIONS FOR SAFE USE AND MAINTENANCE**

1. **WARNING: NEVER LEAVE YOUR CHILD UNATTENDED.  
THE SAFETY OF YOUR CHILD IS YOUR RESPONSIBILITY.**
2. Do not allow children to climb on the dresser.
3. Never leave your child unattended on the dresser.
4. Never use the dresser if it is broken or damaged or there are parts missing.
5. Do not place the dresser in or near the vicinity of open fires or other sources of strong heat, such as gas or electric fires.
6. Always leave the dresser clean and dry. Wipe away any spillage straight away. The dresser can be cleaned with a clean damp cloth. Do not use aggressive cleaning agents such as bleach or strong detergents.
7. Check on a regular basis that all fittings and screws are correctly tightened and are not damaged. Loose screws can pinch parts of the body and clothing resulting in the risk of strangulation.
8. Only use a changing pad which perfectly fits between the borders of the changing unit. Never use a changing pad which is too big. Recommended size 78x49x11.5 cm.
9. Maximum weight of the child 15 kg or maximum age to 12 months.
10. Use only spare parts approved by Love N Care.

Product development dictates that components may occasionally differ from the ones shown in the diagrams of these instructions. The right to change the specifications and design of the furniture without prior notice remains with the manufacturer.