

loven^hcare™



JIT300

SENATOR CHEST

PLEASE KEEP THESE INSTRUCTIONS FOR FUTURE REFERENCE



Congratulations on your new quality Love N Care product from our exclusive range of baby products. This exceptional design combines the most unique features that any baby product offers.

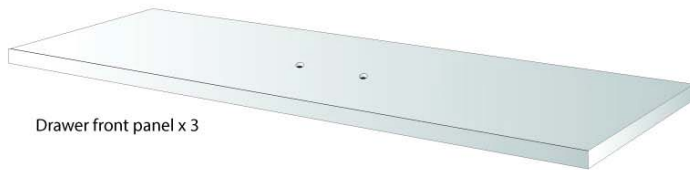
We are confident that you will appreciate its many highlights, including its reliability and durability. Your new product has been manufactured to comply with the Highest Quality Standards and comes with a 12-month warranty.

As you will soon learn there are many more great features about your new Love N Care product.

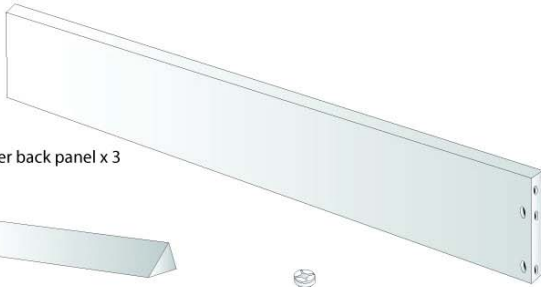


Parts Checklist

Parts Checklist - Drawers x 3



Drawer front panel x 3



Drawer back panel x 3



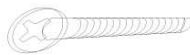
Drawer handle x 3



Drawer runner screw
x 18 x 24



Drawer locking pin x 24



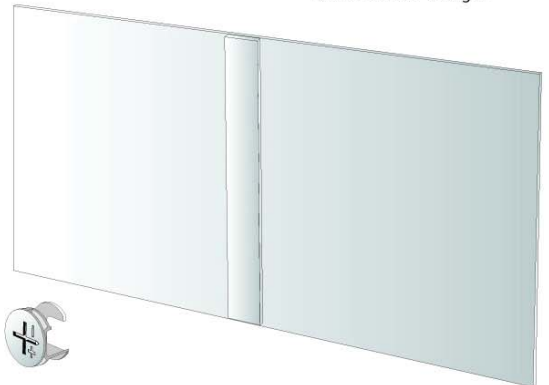
Drawer handle screw x 6



Drawer side panel 3 x left
Drawer side panel 3 x right



Drawer runner 3 x left
Drawer runner 3 x right

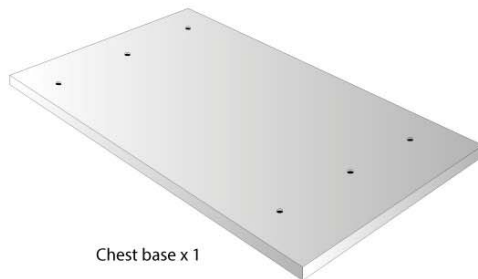


Drawer base x 3



Drawer cam lock x 24

Parts Checklist - Chest case



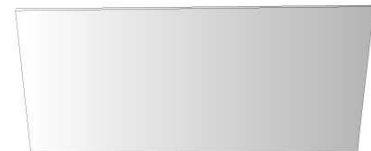
Chest base x 1



Chest top x 1



Back panels support x 1



Chest back panels x 2



Chest side panels x 2



Chest locking pin x 2



Chest cam locks x 2



Chest bolts x 8

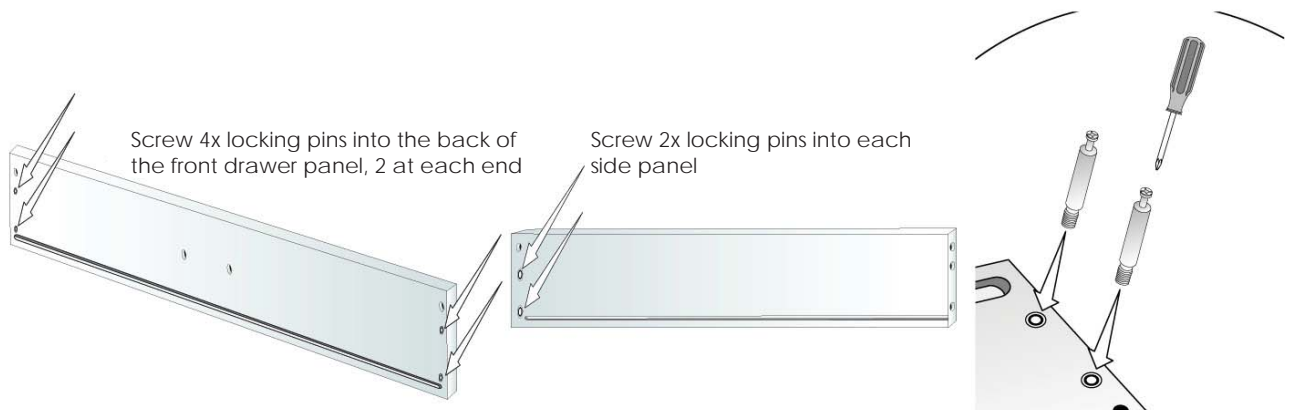


Chest dowels x 34

Assemble Drawers

Step 1. Fit Locking pins to front and side panels x2

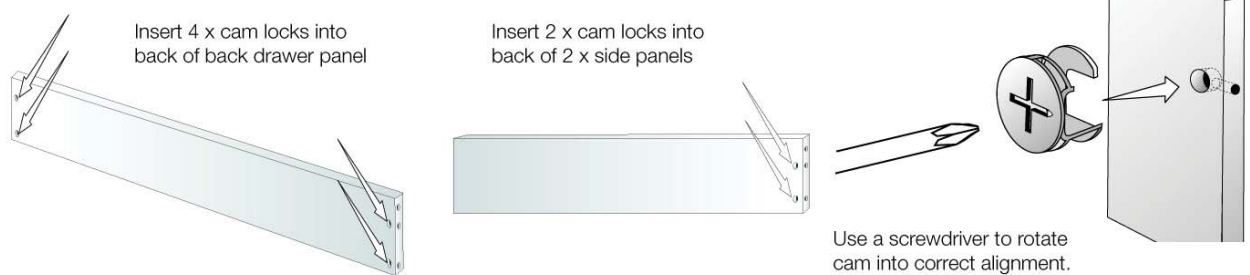
Lay the front and side panels face down on the floor and screw 2x locking pins into the threaded holes on each side panel and screw 4x locking pins into the threaded holes on the front panel (2 at end of each front panel)



Step 2 - Fit the locking cams to the back panel and side panels x2

Lay the back and side panels on the floor with the large holes facing upwards, insert 4x cam locks into the back panel and 2 cam locks into each side panel.

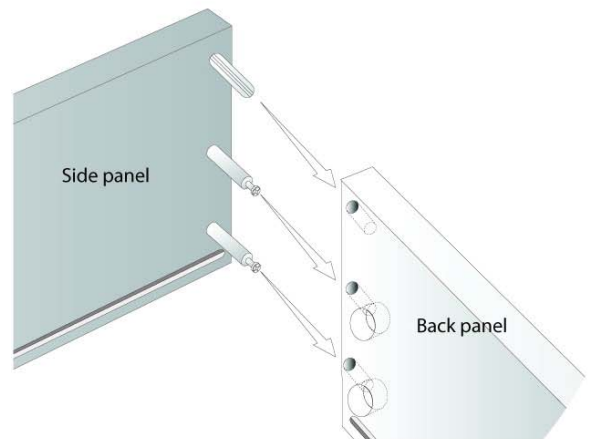
Note: the pointed end of the cross on the cam locks must point in the direction the locking pins will be inserted from



Step 3 - Side Panels to back Panels

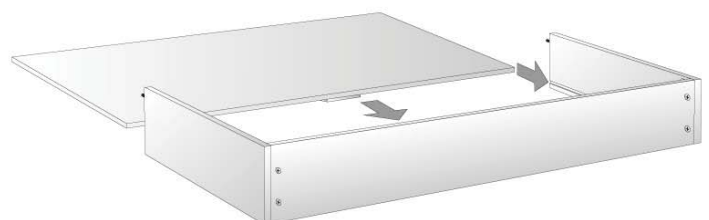
Insert 1x dowel into the hole above the 2x locking pins on the side panels. Align and insert the dowel and locking pins on the side panel to the back panel and tighten the cam locks. Repeat so both side panels are attached to the back panel.

Note: Check that the grooves for the drawer base are facing inwards.



Step 4 - Fit the drawer base

Place the assembled drawer on the floor and insert the base into the grooves in the side panels. Reinforcing strip faces downwards.



Step 5 - Fit the front panel

Stand the Assembled drawer upright, align the drawer front, dowels and locking pins with the corresponding holes and attach the drawer front.

Tighten all cam locks



Step 6 - Fit Drawer handle

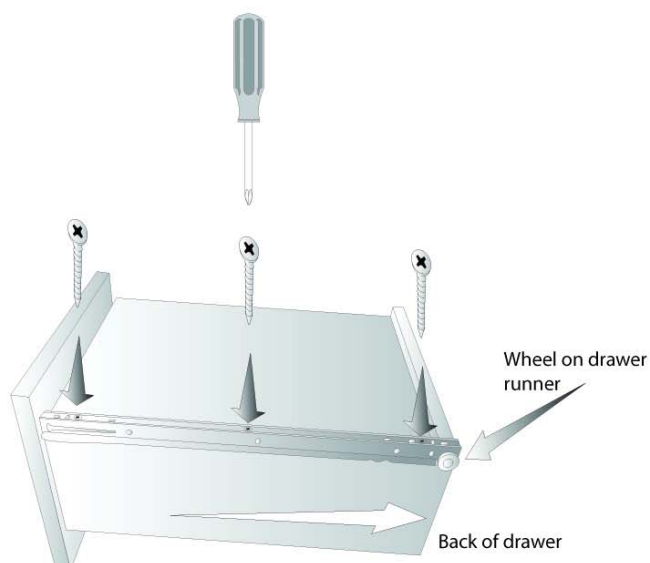
Place drawer handle in position over the 2 holes in the front panel and insert 2x drawer screws through the back of the drawer front and into the drawer handle and tighten.



Step 7 - Fit drawer runners

Turn the drawer runner upside down on the floor. Place drawer runner in position - with the wheel on the runner at the back of the drawer, and pushing the drawer runner up against the drawer front panel.

Note: there are left and right drawer runners. Screw 3x self tapping screws through the runner into the side panel.



The Drawer is complete - Repeat for all drawers

Assemble the Drawer enclosure

Step 1 - Fit locking pins to side panels and dowel to base

Turn the base the correct way up and insert 8x wooden dowels.

Lay the side panels outside facing down and insert 1x locking pin and one x dowel into each side panel.



Step 2 - Fit the back panel support and lower back panel to side panels.

Stand one side panel up on its back edge, attach the back panel support and tighten the cam lock.

Whilst supporting the first side panel repeat and attach the second side panel to the back support.

Slide a back panel into the grooves on the side panels and into the groove in the back support.



Note: The pointed end of the cross on the cam locks must point in the direction the locking pins will be inserted from.

Step 3 - Fit Base to side panels

Whilst the side panels remain supported attach the base aligning the dowels in the base with the holes in the end of the side panels and back panel with the groove in the base.

Insert 4x30mm bolts (2 on each side) through the holes in the square bars attached to the side panel and into the threaded nuts in the base and tighten.



Step 4 - Fit the upper back panel and top to base side panels

Stand the case upright carefully. Insert the top back panel into the grooves on the side panels and the back panel support.

Insert 4x dowels into the holes on the top of each side panel.

Place the top onto the case aligning holes in top with the dowels.

Insert 2x30mm bolts through the holes in supports on each side panel and into top and tighten with an allen key.



The enclosure is complete - insert drawers and attach the change tray.

Check all cam locks and bolts are tight.

Insert the drawers carefully onto their runners





CARE AND MAINTENANCE

ALL LOVE N CARE PRODUCTS HAVE ONE YEAR WARRANTY FROM THE DATE OF PURCHASE.

IT IS RECOMMENDED TO REGULARLY INSPECT AND MAINTAIN MOVEMENT OF LOCKING DEVICES AND SECURITY OF ESSENTIAL COMPONENTS.

REGULARLY CHECK ALL PARTS FOR WEAR AND TEAR.

YOUR FURNITURE MAY BE CLEANED BY WIPING WITH A DAMP CLOTH AND DRYING WITH A SOFT CLEAN CLOTH.

DO NOT USE ABRASIVES, BLEACH, ALCOHOL OR AMMONIA-BASED HOUSEHOLD POLISHES.

TAKE CARE WHEN HANDLING OR MOVING THE FURNITURE. CARELESS HANDLING MAY CAUSE DAMAGE.

CHECK THE COTS SCREWS AND LOCKS TO MAKE SURE THEY ARE ALL KEPT IN GOOD WORKING ORDER.

IF ANY OF THE PARTS ARE MISSING OR BROKEN YOU SHOULD CONTACT THE MANUFACTURER AND DISCONTINUE USING THE COT UNTIL THEY ARE REPLACED.

WARRANTY AGAINST DEFECTS.

All Love N Care products are guaranteed for twelve months from the date of purchase. Our goods come with guarantees that cannot be excluded under the Australian Consumer Law.

You are entitled to a replacement or refund for a major failure and for compensation for any other reasonably foreseeable loss or damage. you are also entitled to have the goods repaired or replaced if the goods fail to be of acceptable quality and the failure does not amount to a major failure. This covers against faults which develop through faulty materials and workmanship.

Misuse, accidental damages, normal wear and tear or neglect are not covered.

If a fault becomes apparent, please return the item to the store of purchase with your receipt. You must inform the store what the defect is. We will then arrange for its repair or it will be assessed for replacement as expediently as possible. The benefits of this warranty are in addition to other right and remedies under the law in relation to the goods or services to which this warranty relates.

If you are unable to return the item to the store of purchase, you can contact Love N Care on free call 1300 732 599.

Where you send the product directly to the manufacturer then you may be liable for the costs of transportation to and from Love N Care. Love N Care will meet the reasonable expenses incurred by a consumer in a making a warranty claim. You can claim expenses incurred in making a claim by contacting our customer service team on 1300 732 599 or by email at info@lovencare.com.au

Manufactured By:
Love N Care Pty Ltd.
297-299 Canterbury Rd, Revesby
NSW 2212 Australia
Contact No: 1300 732 599
Fax: 02 9774 4633



Contact Us

Head Office:
Love N Care Pty Ltd.
297-299 Canterbury Rd, Revesby
NSW 2212 Australia
Contact No: 02 9774 4655
Fax: 02 9774 4633
Email: info@lovencare.com.au
Website: www.lovencare.com.au

let's be friends!

 <http://www.facebook.com/lovencare1>

 http://twitter.com/love_ncare



100 % AUSTRALIAN OWNED SINCE 1984

lovehncare™
lovencare.com.au